

USB-Parallel Printer Adapter

User's Manual

Introduction	2
Getting Started	2
Installing the USB-Parallel Printer Adapter.....	3
Windows [®] 98 SE	3
Windows [®] Me.....	7
Windows [®] 2000 / Windows [®] XP	11
Notices and Classifications	15

Introduction

Thank you for purchasing the USB-Parallel Printer Adapter. The USB-Parallel Printer Adapter enables any Windows® 98 SE, Windows® Me, Windows® XP, or Windows® 2000 equipped PC with an available USB port to print to most parallel printers. To make use of the USB-Parallel Printer Adapter simply power on your computer, insert the USB connector into an available USB port and follow the installation process.

Please thoroughly read and follow the instructions provided in this manual. Failure to do so may result in damage to the USB-Parallel Printer Adapter and any or all of the connected devices.

Getting Started

Please review the following before installing the USB-Parallel Printer Adapter.

Features

The following features distinguish the USB-Parallel Printer Adapter:

- Supports standard PC Parallel port operation
- The USB Printer Class driver included in Windows® XP and 2000 requires no additional driver and supports multiple printers with multiple USB-Parallel Printer Adapters
- Microsoft® Windows® 98 SE and Windows® Me drivers included

Note: Microsoft® Windows® XP and Windows® 2000 equipped PCs do not require driver installation.

System requirements

- Pentium-class PC with minimum 266 MHz processor
- Microsoft® Windows® 98 SE, Me, XP or 2000 installed
- CD-ROM drive
- An available USB port

Package contents

Check the USB Parallel Printer package, it should contain the following items:

- USB-Parallel Printer Adapter
- USB-Parallel Printer Adapter QuickStart Guide
- USB-Parallel Printer Adapter Installation CD for Windows® 98 SE and Window® Me users

Installing the USB-Parallel Printer Adapter

Installation Windows® 98 SE

The USB-Parallel Printer Adapter can be installed on PCs running Windows® 98 SE by completing the following steps.

- Ensure that power to the PC and all connected devices is turned **OFF**. **DO NOT** plug the USB-Parallel Printer Adapter into the PC. This will be done later in the installation process.
- Power on the PC and wait until the system has finished loading
- Insert the USB-Parallel Printer Adapter installation CD into the CD-ROM drive.
- Insert the USB-Parallel Printer Adapter USB connector into an available USB port on the PC or USB hub. Windows® 98 SE will detect the new hardware automatically and prompt you to begin installation of the necessary hardware driver.

The “Add New Hardware Wizard” will issue the following prompts:

- 1) Windows® 98 SE will automatically detect the new hardware and begin searching for the hardware driver, click “**Next**”.



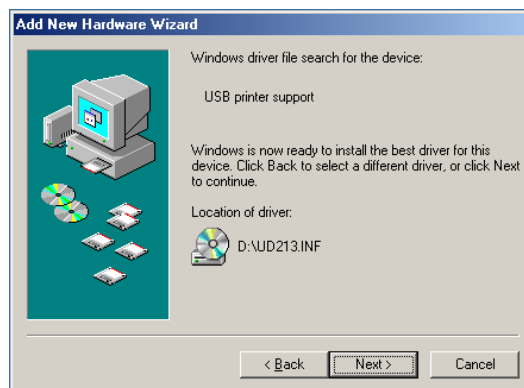
- 2) From the following screen, check “**Search for the best driver for your device**” and click “**Next**”.



- 3) From the following screen check “**CD-ROM drive**”. Click “**Next**”.



- 4) Windows® 98 SE will find the driver “**UD213.inf**”. Click “**Next**” to install the driver.

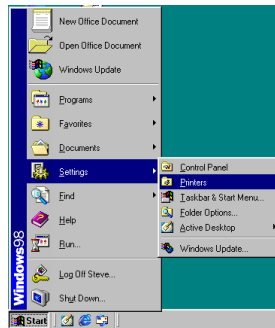


- 5) Windows® 98 SE has finished installing the driver. Click “**Finish**”

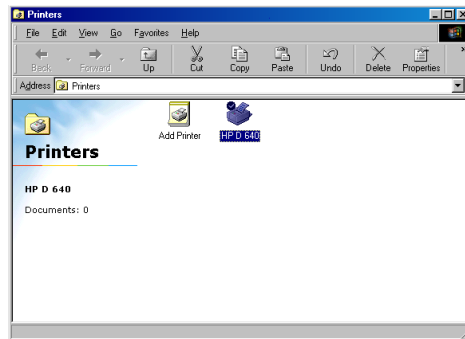
After installing the USB-Parallel Printer Adapter, configure the printer by completing the following steps.

Configure the Printer Windows® 98 SE

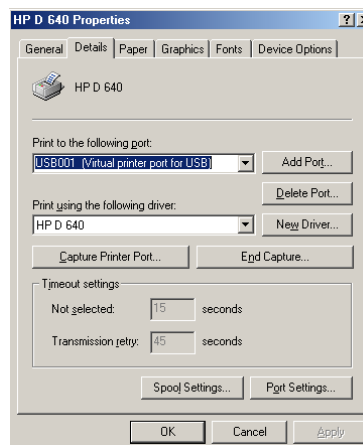
- 1) Plug the USB-Parallel Printer Adapter Parallel connector into the Parallel port on the printer.
- 2) Navigate to the Windows® 98 SE “**Start**” menu, select “**Settings**” then select “**Printers**”.



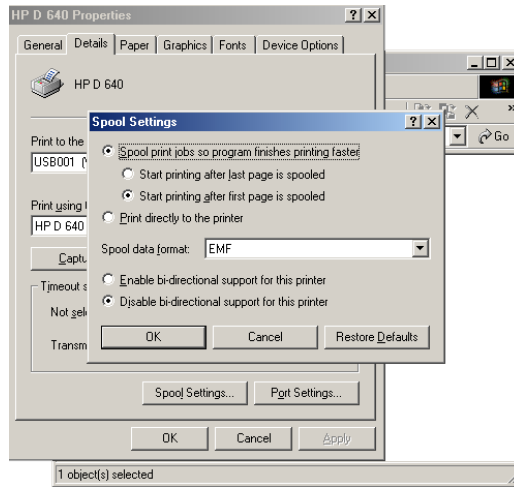
- 3) Select your printer.



- 4) **Right-click** on the icon for your printer and select “**Properties**”. From the following menu select the “**Details**” tab. Under the heading “**Print to the following port**” select **USB001 (Virtual printer port for USB)**.

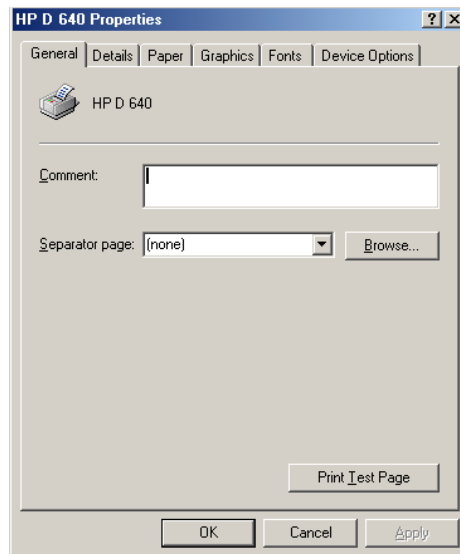


- 5) Next click **“Spool Settings”** and select **“Disable bi-directional printing support for this printer”** from the following dialog. Click **“OK”**



Note: If the **“Disable bi-directional printing support for this printer”** is gray or is already checked then bi-directional printing has already been disabled and you may skip this step.

- 6) Printer Setup is complete. Click on the **“General”** tab and Click **“Print Test Page”** to ensure your printer is working properly.



Congratulations, your Parallel Printer is now ready for use.

Installation Windows® Me

The USB-Parallel Printer Adapter is installed in a few easy steps with Windows® Me.

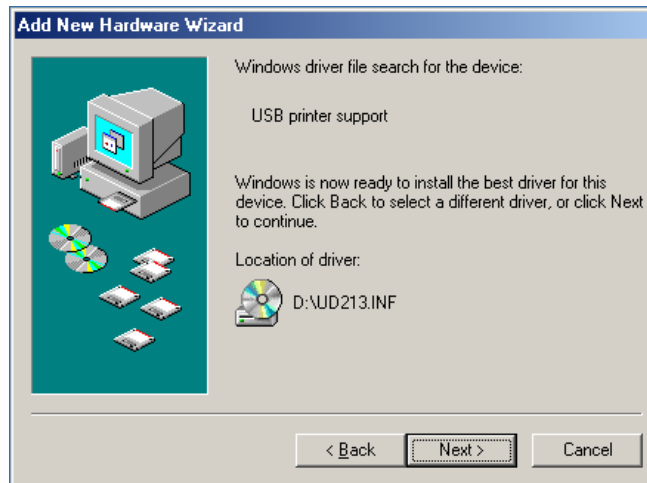
- Ensure that power to the PC and all connected devices is turned **OFF**. **DO NOT** plug the USB-Parallel Printer Adapter into the PC. This will be done later in the installation process.
- Power on the PC and wait until the system has finished loading
- Insert the USB-Parallel Printer Adapter installation CD into the CD-ROM drive.
- Insert the USB-Parallel Printer Adapter USB connector into an available USB port on the PC or USB hub. Windows® Me will detect the new hardware automatically and prompt you to begin the installation of the necessary hardware driver.

The “Add New Hardware Wizard” will issue the following prompts:

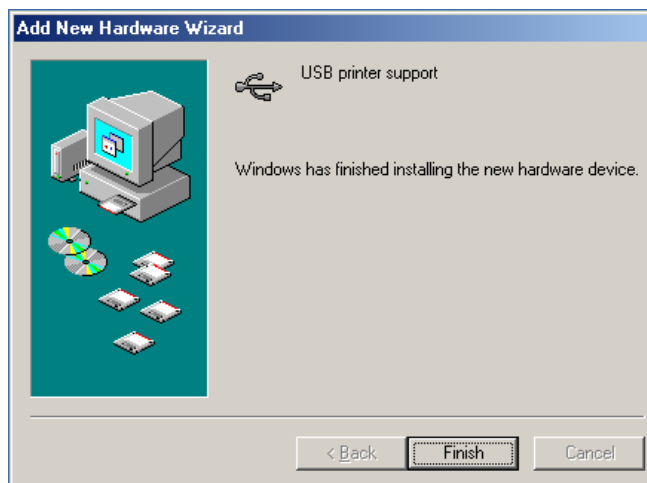
- 1) Windows® Me will ask where to search for the USB-Parallel Printer Adapter driver.
- 2) Check “**Automatically search for a better driver**” and click “**Next**”.



- 3) From the following prompt check **“CD-ROM”**. Windows® Me will find the driver **“UD213.inf”**. Click **“Next”** to install the driver.



- 4) Windows® Me has finished installing the driver. Click **“Finish”**.

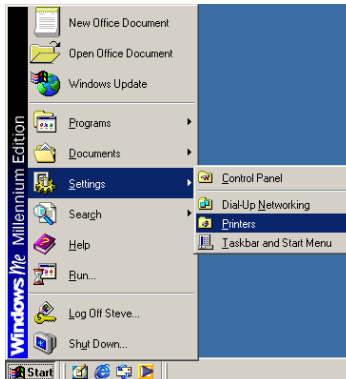


After installing the USB-Parallel Printer Adapter, configure the printer by completing the following steps.

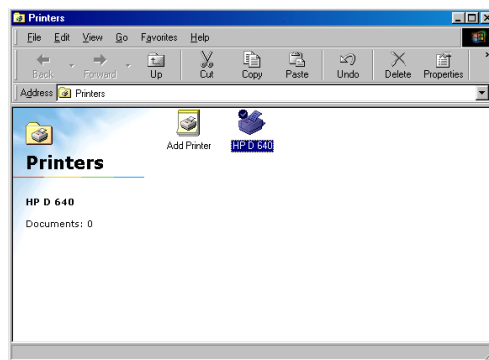
Configure the Printer Windows® Me

- 1) Plug the USB-Parallel Printer Adapter Parallel connector into the Parallel port on the printer.

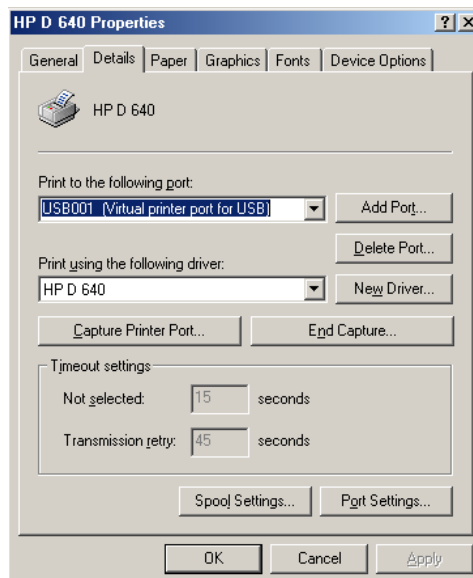
- 2) Navigate to the Windows® Me “Start” menu, select “Settings” then select “Printers”.



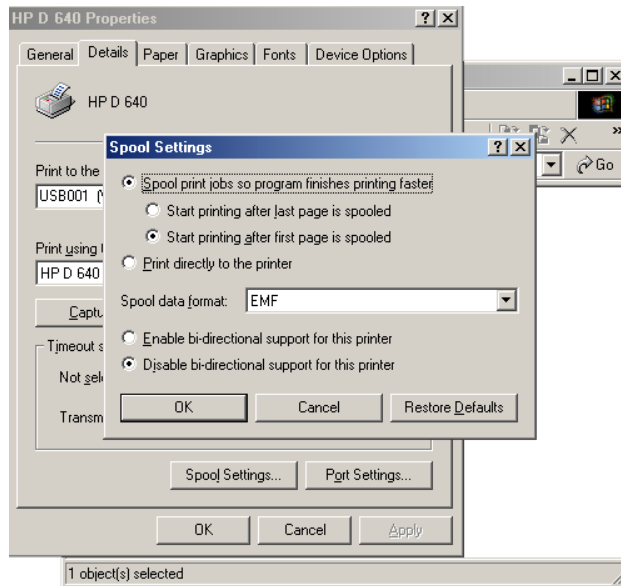
- 3) Select your printer.



- 4) **Right-click** on the icon for your printer and select “Properties”. From the following menu select the “Details” tab. Under the heading “Print to the following port” select **USB001 (Virtual printer port for USB)**.

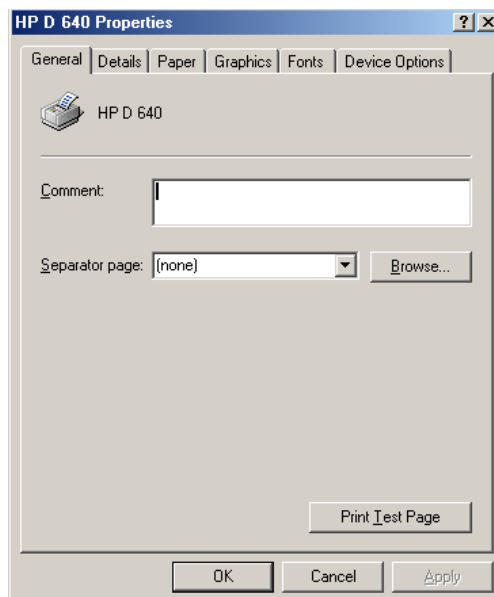


- 5) Next click **“Spool Settings”** and select **“Disable bi-directional printing support for this printer”** from the following dialog. Click **“OK”**



Note: If the **“Disable bi-directional printing support for this printer”** is gray or is already checked then bi-directional printing has already been disabled and you may skip this step.

- 6) Printer Setup is complete. Click on the **“General”** tab and Click **“Print Test Page”** to ensure your printer is working properly.



Congratulations, your Parallel Printer is now ready for use.

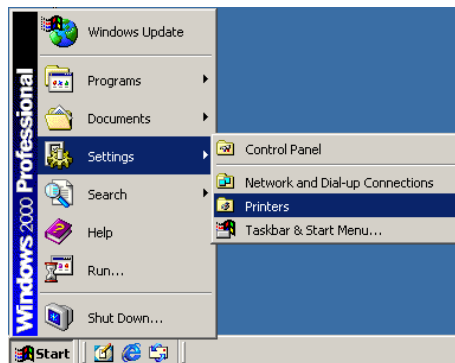
Installation Windows® 2000 / Windows® XP

The newest operating systems from Microsoft® including Windows® 2000 and Windows® XP require no user intervention in the driver installation process. Begin using your new USB-Parallel Printer Adapter by completing the following steps.

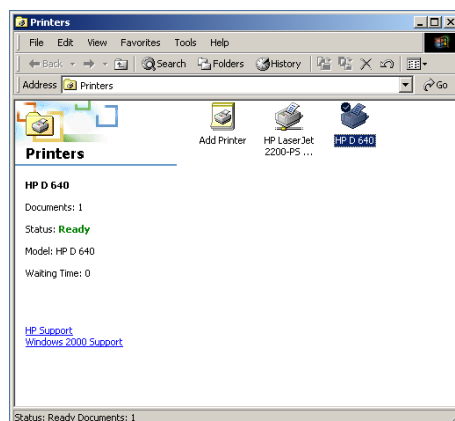
- Ensure that power to the PC and all connected devices is turned **OFF**. **DO NOT** plug the USB-Parallel Printer Adapter into the PC. This will be done later in the installation process.
- Power on your PC
- Plug the USB connector into an available USB port on your PC or USB hub.
- Windows® 2000 / Windows® XP will recognize and install the needed software for your new USB-Parallel Printer Adapter.

Configure the Printer Windows® 2000

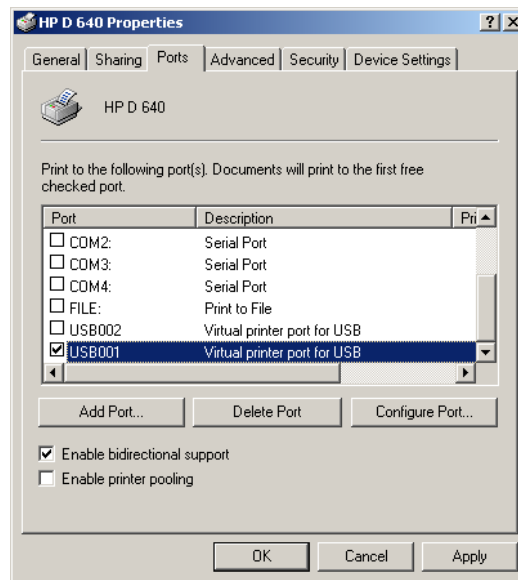
- 1) Plug the USB-Parallel Printer Adapter Parallel connector into the Parallel port on the printer.
- 2) Navigate to the Windows® 2000 “**Start**” menu, select “**Settings**” then select “**Printers**”.



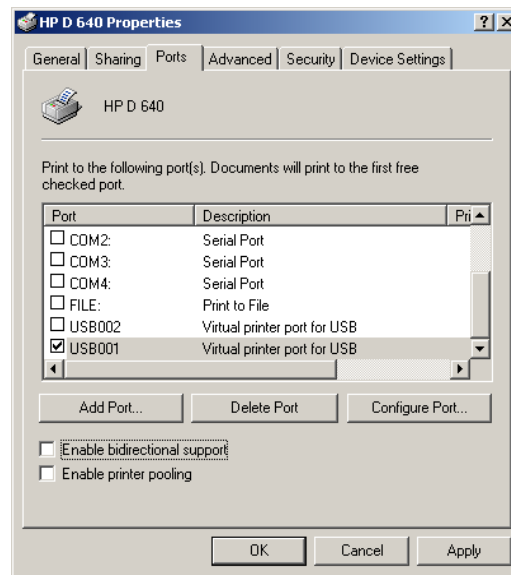
- 3) **Right-Click** on the icon for your printer and select “**Properties**”.



- 4) Select the **“Ports”** tab. Find **“USB001 Virtual printer port for USB”** and place a checkmark in the box to the left. Click **“Apply”**.

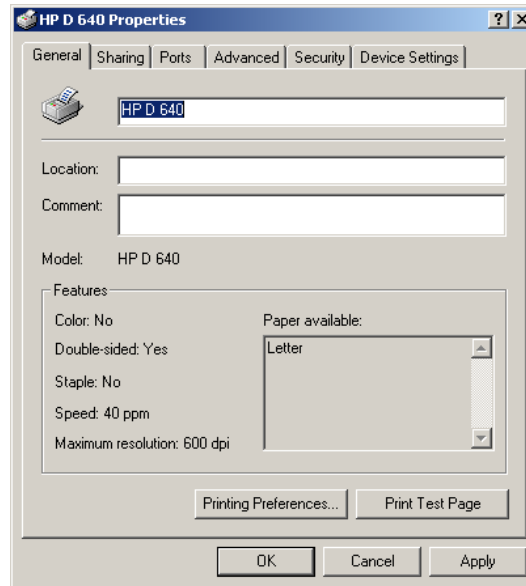


- 5) Click to remove the checkmark from the box labeled **“Enable bi-directional printing”**. Wrong screen shot



Note: If the **“Enable bi-directional printing support for this printer”** is gray or not checked then bi-directional printing has already been disabled and you may skip this step.

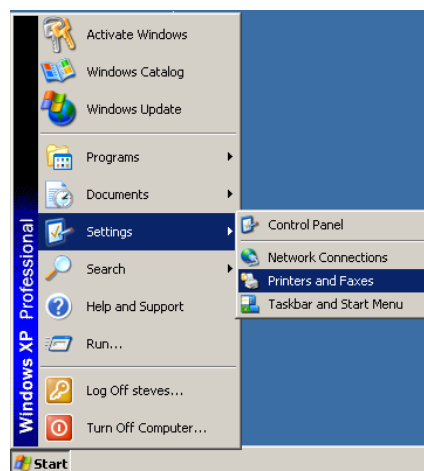
- 6) Printer Setup is complete. Click on the **“General”** tab and click **“Print Test Page”** to ensure your printer is working properly.



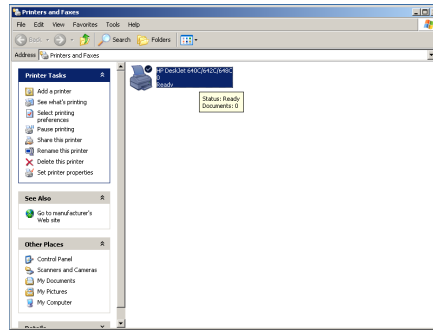
Congratulations, your Parallel Printer is now ready for use.

Configure the Printer Windows® XP

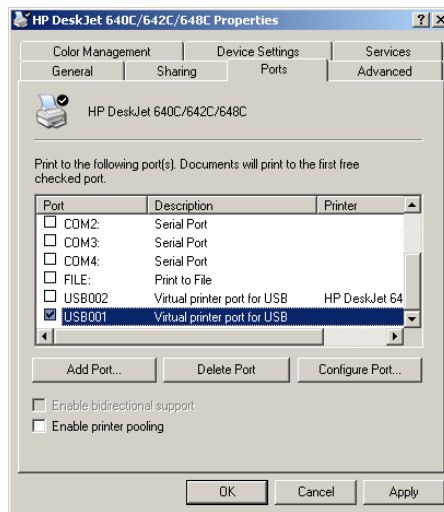
- 1) Plug the USB-Parallel Printer Adapter Parallel connector into the Parallel port on the printer.
- 2) Navigate to the Windows® XP **“Start”** menu, select **“Settings”** then select **“Printers and Faxes”**.



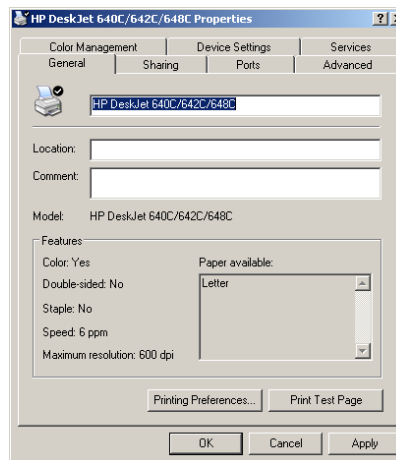
3) **Right-Click** on the icon for your printer and select **“Properties”**.



4) Select the **“Ports”** tab. Find **“USB001 Virtual printer port for USB”** and place a checkmark in the box to the left. Click **“Apply”**.



5) Click on the **“General”** tab and click **“Print test page”** to ensure your printer is working properly.



Congratulations, your Parallel Printer is now ready for use.

Notices and Classifications

FCC-B Radio Frequency Interference Statement

This device complies with part 15 of the FCC rules. Operation is subject to the following two conditions:

- (1) This device may not cause harmful interference.
- (2) This device must accept any interference received, including interference that may cause undesired operation.

NOTE: This equipment has been tested and found to comply with the limits for a class B digital device, pursuant to part 15 of the FCC rules. These limits are designed to provide reasonable protection against harmful interference when the equipment is operated in a commercial environment. This equipment generates, uses and can radiate radio frequency energy and, if not installed and used in accordance with the instruction manual, may cause harmful interference to radio communications.