

BT-0260

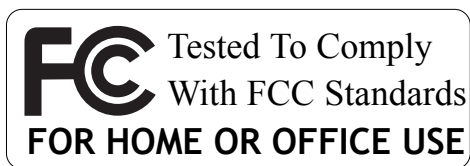
Printer Combo Adapter

CONFIGURATION UTILITY GUIDE

VERSION 1.0



Bluetooth



© All rights reserved.

All trade names are registered trademarks of respective manufacturers listed.

The Bluetoothname and the Bluetoothtrademarks are owned by BluetoothSIG, Inc.

This manual may not be copied in any media or form without the written consent of original maker.

TABLE OF CONTENTS

- PURPOSE 1
 - FEATURES 1
 - SYSTEM REQUIREMENTS 1

- INSTALL UTILITY PROGRAM 2

- CHANGE DEVICE DRIVER 4

- LOGIN CONFIGURATION UTILITY 8
 - 1. UPGRADE BT-0260 FIRMWARE 9
 - 2. SET/CLEAR PIN CODE 11
 - 3. CHANGE DEVICE NAME 12
 - 4. ENABLE/DISABLE TESTING PAGE 13

- RESTORE DEVICE DRIVER 14

PURPOSE

Thank you for your purchase of the BT-0260 Printer Combo Adapter. The Configuration Utility is a program which allows professional user to configure BT-0260 adapter for some special purposes, they are :

- Upgrade your BT-0260 firmware if there is any.
- Set/Clear PIN code for paired users.
- Customize your BT-0260 device name.
- Enable/Disable printing a testing page on printer.

SYSTEM REQUIREMENTS

- PCs must have a Bluetooth device installed, such as a Bluetooth USB dongle. It allows you to communicate with BT-0260 Printer Combo Adapter.
- PCs must have a Bluetooth device driver installed, such as Widcomm driver. It is always accompanied with your Bluetooth dongle device purchased. Furthermore, make sure the driver is of the latest revision which supports Bluetooth print service.
- Utility CD - Which contains Utility program, and a special driver which must be installed before running Utility program, and removed after Utility program is finished.

PROCEDURES

- Run **Setup.exe** in Utility CD to explore Utility program and new Run_Utility driver files.
- Remove original Widcomm Bluetooth driver, update it to a new Run_Utility driver.
- Run Utility program. Customize your BT-0260 adapter freely.
- Close Utility program.
- Remove Run_Utility driver, restore original Widcomm Bluetooth driver.
- Print your file by using new features of BT-0260 adapter.

INSTALL UTILITY PROGRAM

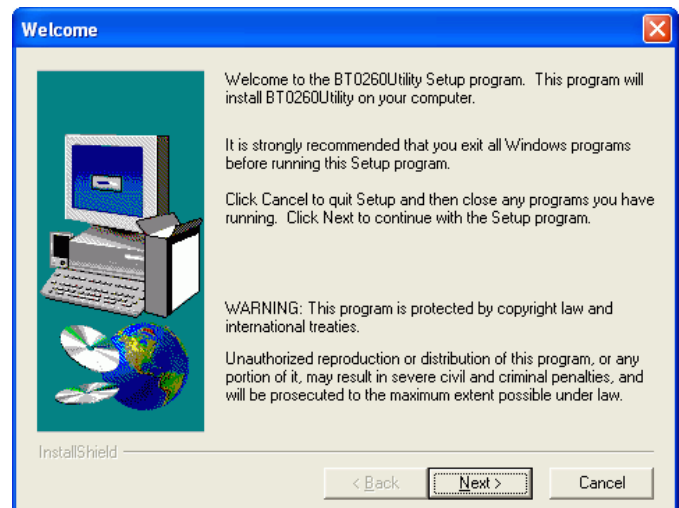
Find CD in your BT-0260 package, put it into CD drive of your PC.

Step 1 :

Unpack the compressed package including this utility.

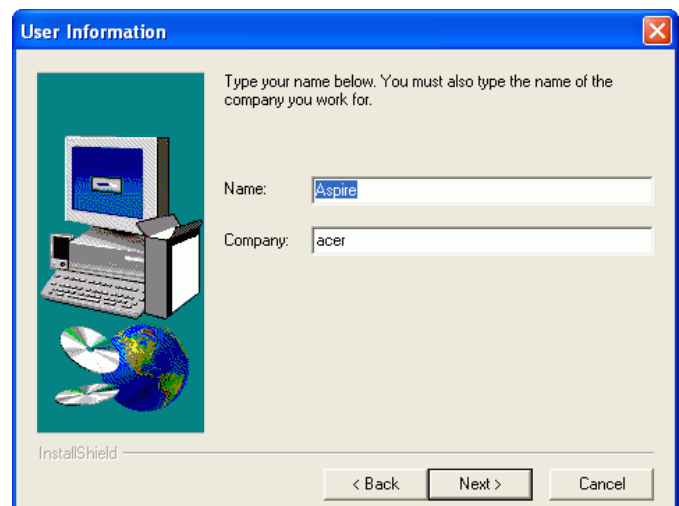
Double click **Setup.exe** to start the installation.

Copyright information, click **Next** button



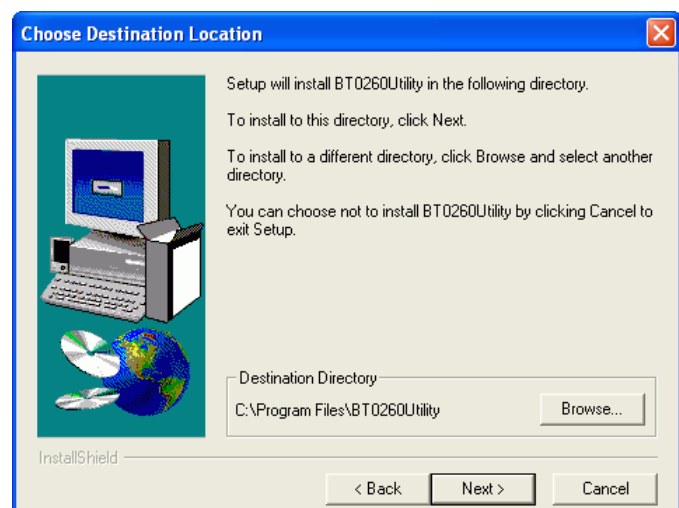
Step 2 :

Fill in the text of your name and company, or left them blank.



Step 3 :

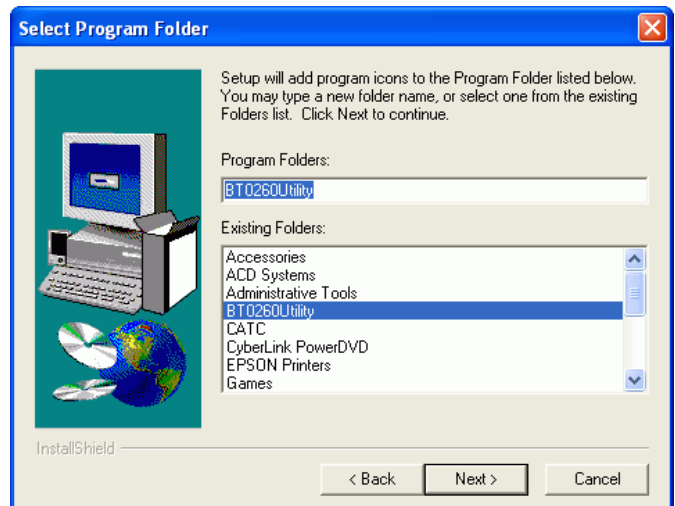
Select destination position, the subfolder "Driver" contains the device driver for Utility program.



Step 4 :

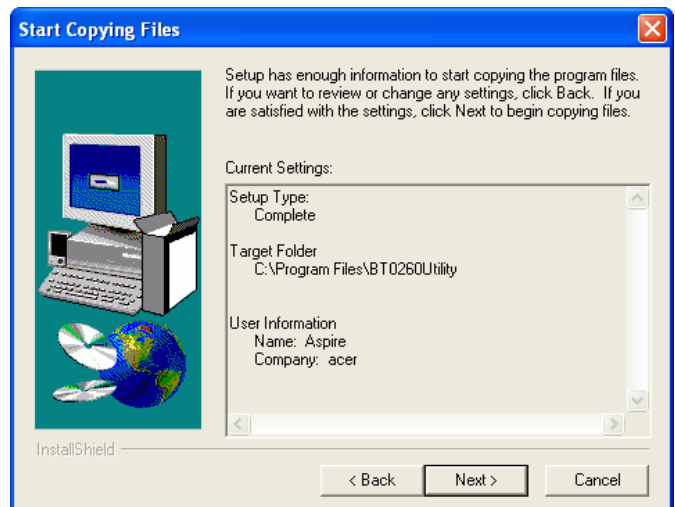
Specify Program name, here, we choose :

BT0260Utility as program name.



Step 5 :

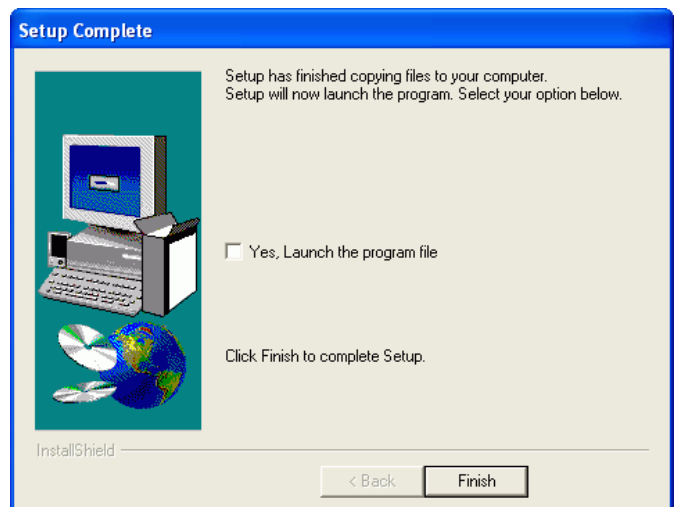
Click **Next** button.



Step 6 :

Click **Finish** button.

It will copy all the necessary files to your PC for future operation.



CHANGE DEVICE DRIVER

After Utility program has been copied to your PC, you need to manually change the Widcomm Bluetooth driver on your PC to a new one. The reason is that Widcomm does not provide enough resources for us to manipulate upgrading firmware, so we have to use another tool to reach the goal.

Check Current Driver

We assume you already plugged a Bluetooth Dongle into your PC, and a correct Widcomm driver has been installed. If you are a Windows XP SP1 (or later) user, you also have followed the steps mentioned in User's Manual Page 6 - UPDATE BLUETOOTH DRIVER to install a right driver for your Bluetooth Dongle.

Click [Start](#) on task bar.

Click [Control Panel](#).

Double-click on [System](#) icon.

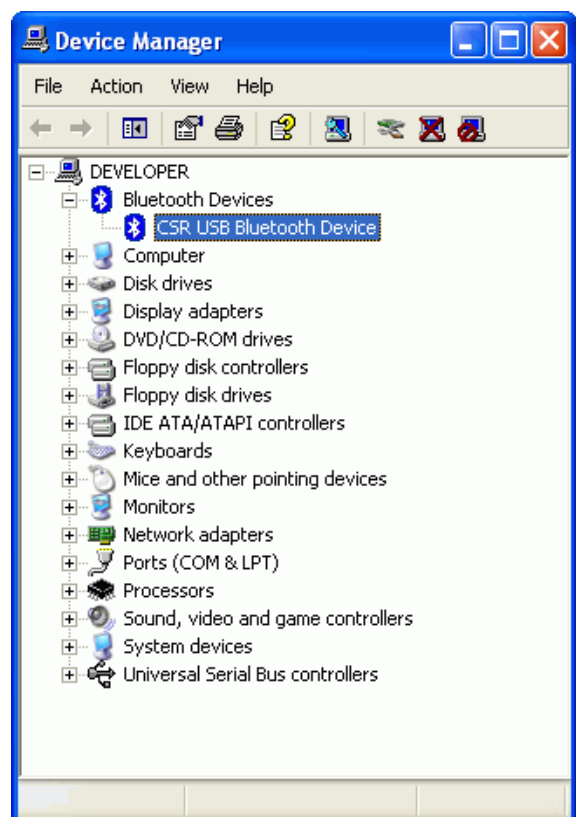
Select [Hardware](#) page.

Click on [Device Manager](#), the Device Manager window will pop up.

Bluetooth device is appearing in [Universal Serial Bus controllers](#) or [Bluetooth Devices](#) branch.

In this example, expand [Bluetooth Devices](#), you will see a Bluetooth device - [CSR USB Bluetooth Device](#) is there.

This Widcomm driver accompanied with [CSR USB Bluetooth Device](#) is not what we can use in running Utility program. Please update this driver according to the method discussed in next section - Update Driver.

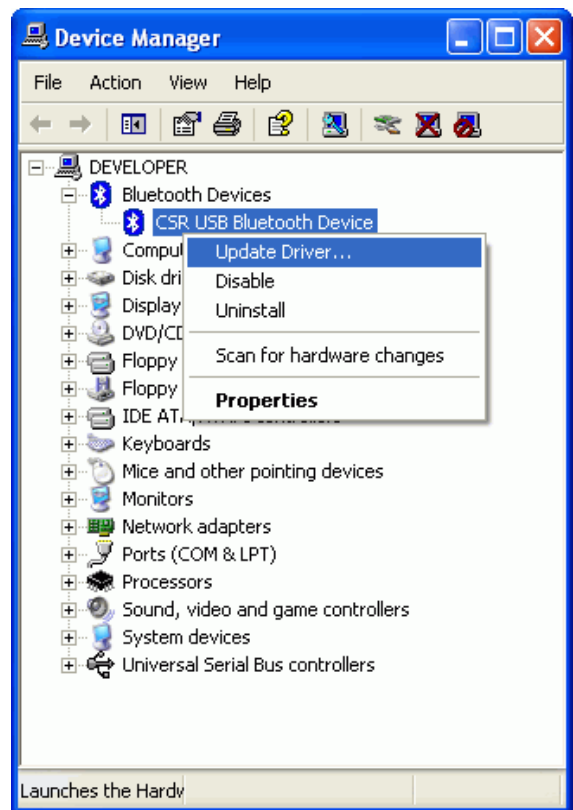


Update Driver

Here, we will tell you step by step to update the Bluetooth driver to a new one which Utility program can recognize.

Step 1:

In “Device Manager”, from Bluetooth Devices, right click **CSR USB Bluetooth Device** label, and then click **Update Driver....**

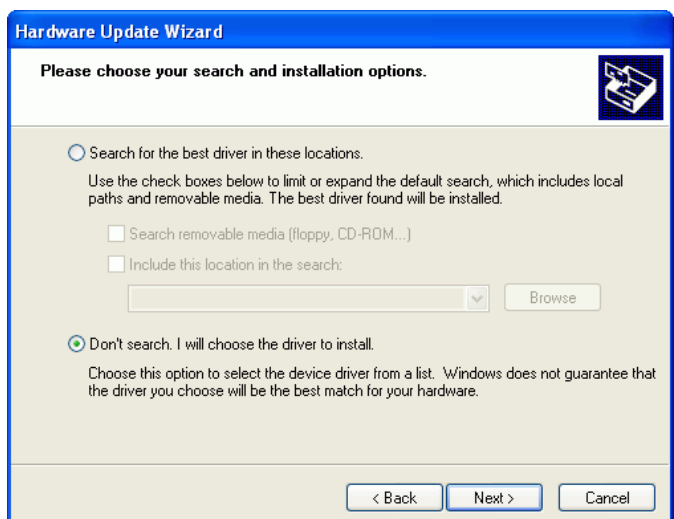


Step 2:

Select “Install from a list or specific location (Advanced)” option, click Next.

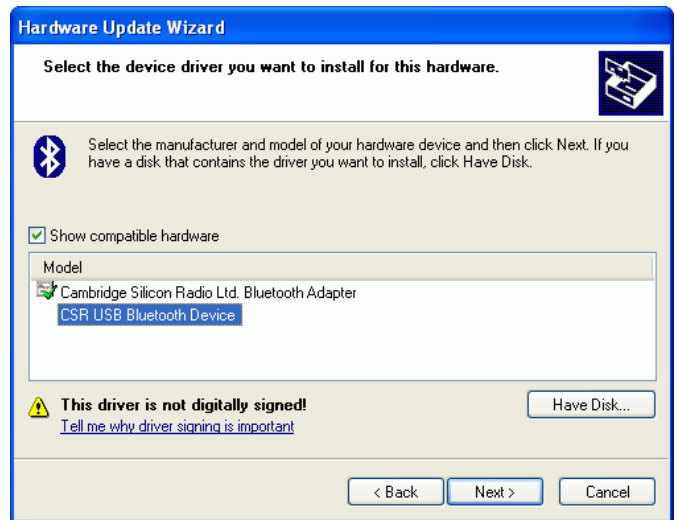
Select “Don’t Search. I will choose the driver to install”, click Next button.

Step 3:



Step 4:

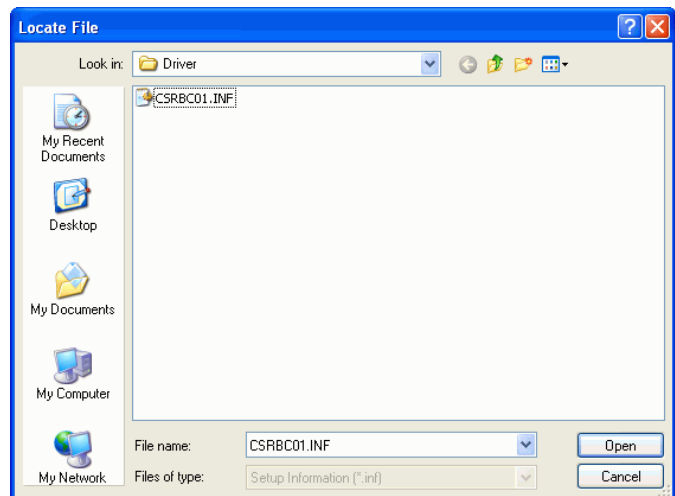
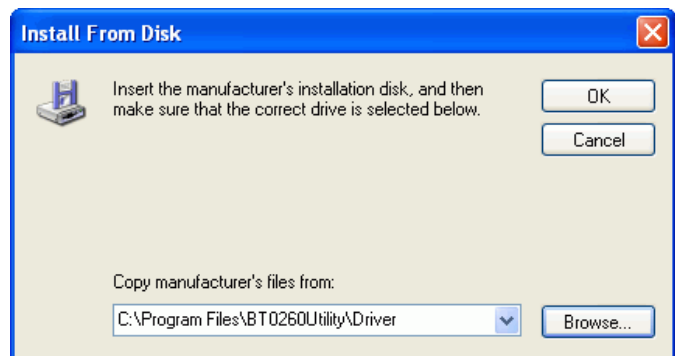
Click “Have Disk...” button



Step 5:

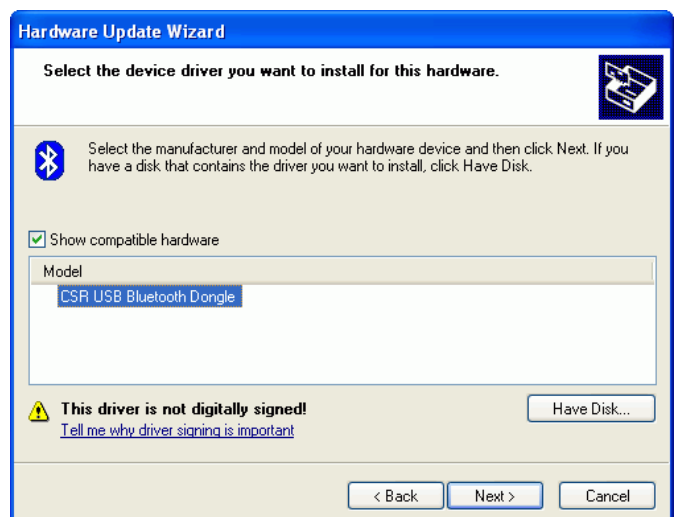
Click “Browse...” button and select a utility installation folder, such as C:\Program Files\BT0260Utility\Driver which contains a driver file - CSRBC01.INF.

Click OK.



Step 6:

You will see the driver name, click Next button.



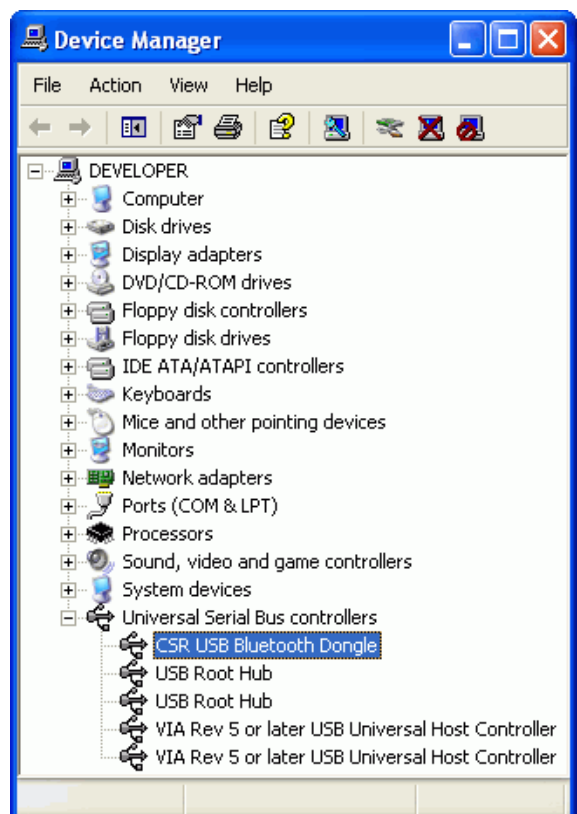
Click **Continue Anyway**.



Step 7:
Click **Finish** button to complete upgrading.



Step 8:
In "Device Manager", you will see a new Universal Serial Bus controllers equipped with driver "CSR USB Bluetooth Dongle". This is the driver which we need in running Configuration Utility program.

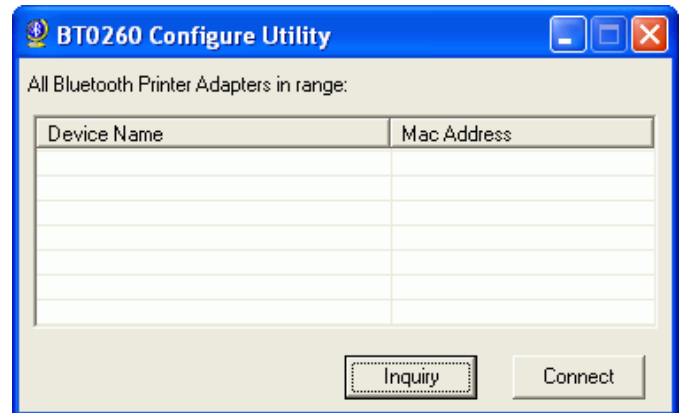


LOGIN CONFIGURATION UTILITY

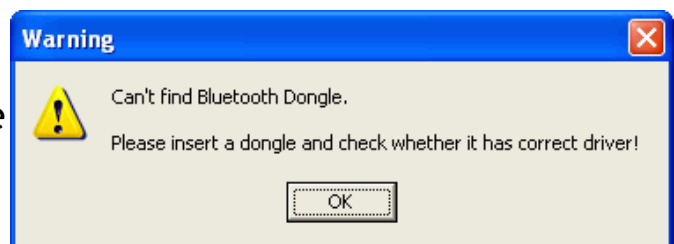
After new driver was installed, you can start running the utility program.

Click **Start** on toolbar,
Select **All Programs**,
Select **BT0260Utility**,
Select **BTConfigure** to run configura-
tion utility.

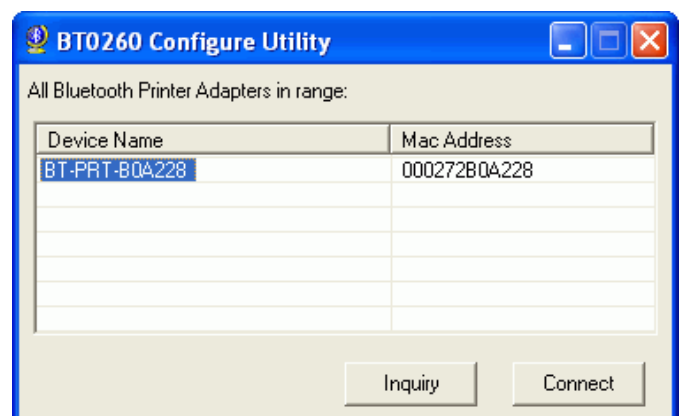
The Utility windows will pop up.
Please click **Inquiry** to discover any
Bluetooth printer in range.



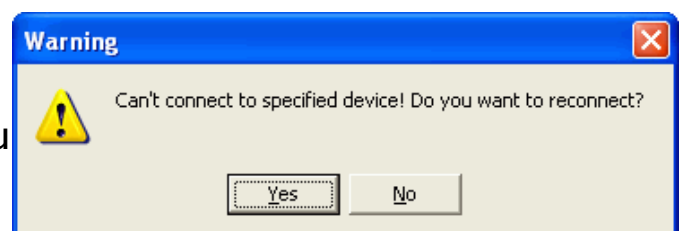
Note : If the driver is incorrect, you
will see “**Can’t find Bluetooth
Dongle**”, the application will soon be
terminated.



One BT-0260 printer adapter (with
series # : BT-PRT-B0A228) is found.
Click **Connect** to connect Utility
program with it.

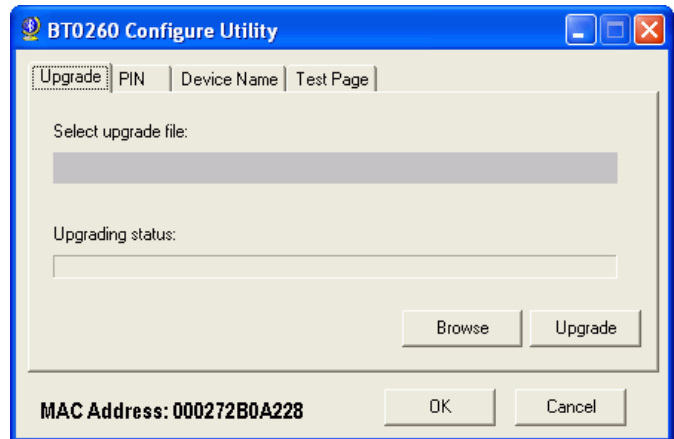


In some cases, you have to try many
times to connect destination device,
if the device can not be connected,
the flowing message will pop up, you
may choose to reconnect or not.



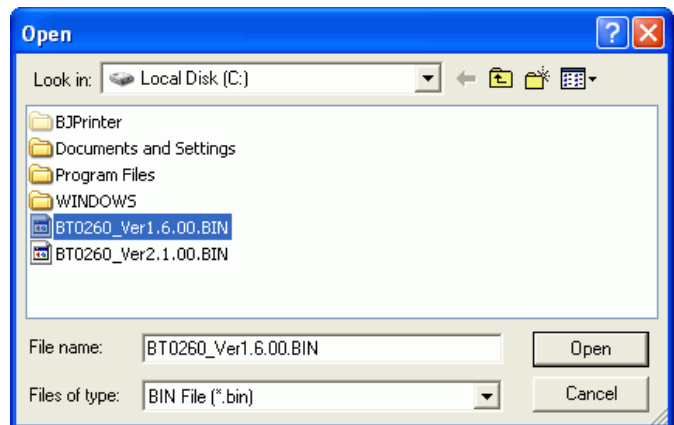
1. UPGRADE BT-0260 FIRMWARE

Once you successfully logged in, you will see **Upgrade** panel.

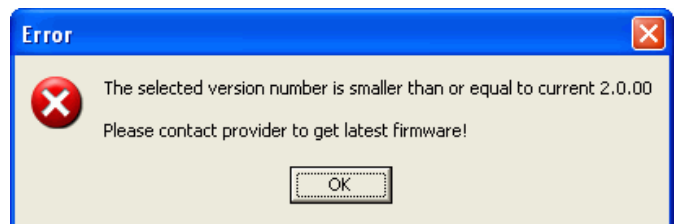


Click **Browse** button to select a firmware file - **BT-0260_Ver1.6.00.BIN** for upgrade.

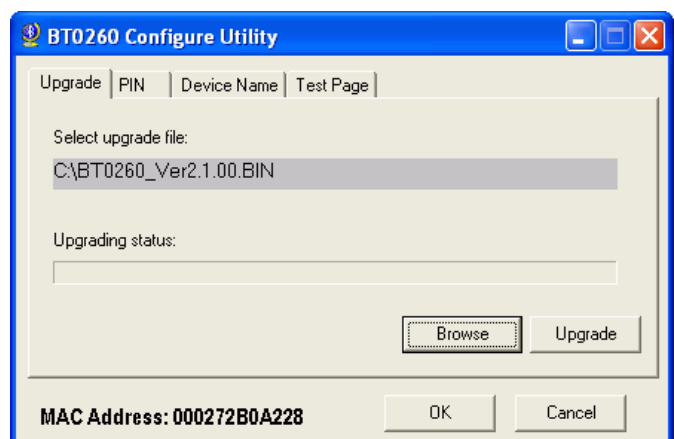
New firmware file can be downloaded from websites. Please contact your dealer for more information.



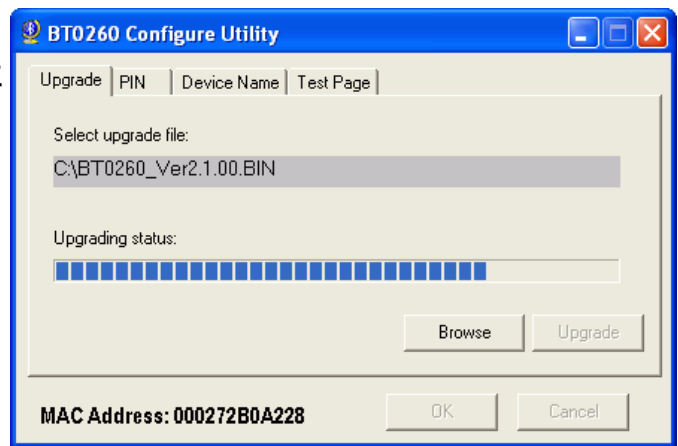
You will get an error message if the selected firmware is older than the current revision on the board.



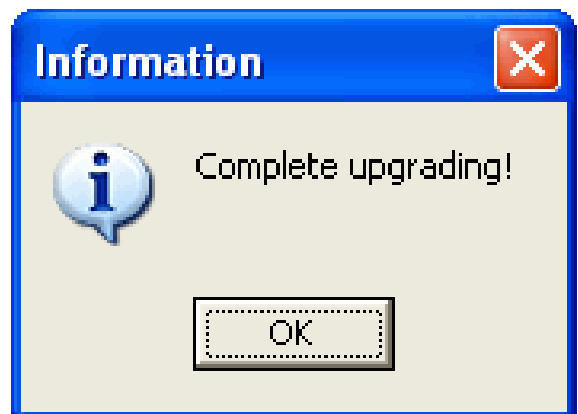
When you select a correct firmware file, you can click **Upgrade** button to start the upgrade.



In the process of upgrading, other buttons are disabled and you are not able to close this application until it finishes.



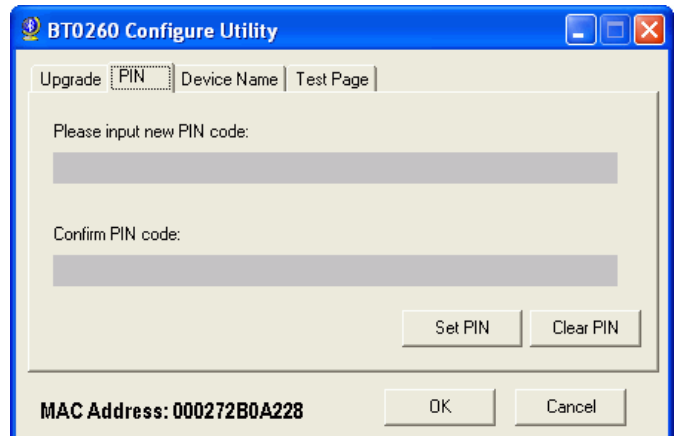
This message box will be displayed when upgrade is over, please power off then power on BT-0260 printer adapter to run new firmware.



2. SET/CLEAR PIN CODE

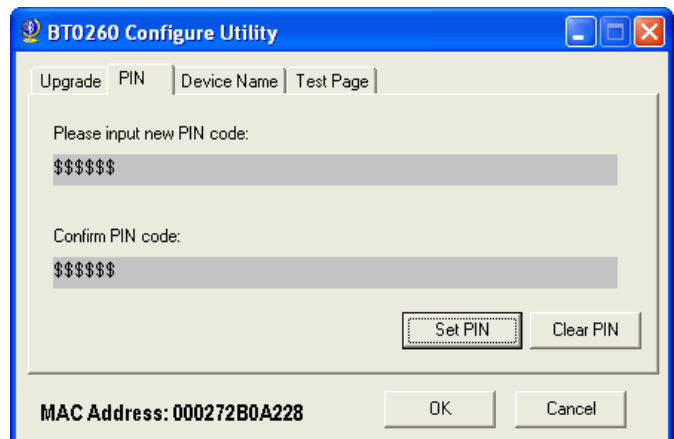
PIN code provides limited access. Only PCs with Bluetooth Dongles which have the same PIN code can use this BT-0260 adapter to print. Others are prohibited.

You can set PIN by clicking **Set PIN** button or clear PIN by clicking **Clear PIN** button.



The maximum length of PIN code is 16 bytes containing any printable characters.

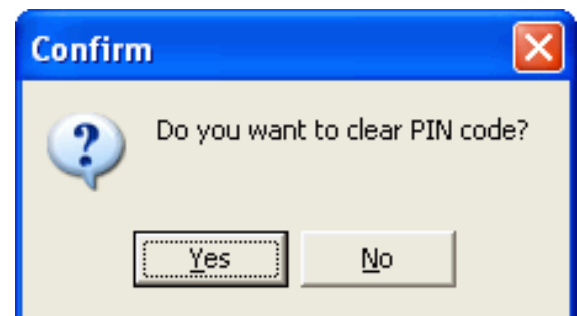
Enter the PIN code, then confirm it by entering the same code in confirmed box.



If a wrong PIN code was entered, you will get a tip.



If you want to clear the PIN code, you will see a confirmation message.



3. CHANGE DEVICE NAME

In this example, BT-0260 adapter has a default device name **BT-PRT-B0A228**. While digits B0A228 are the last six digits of Mac address. Each BT-0260 adapter has a different Mac address, so does it have a unique device name.

You can customize your BT-0260 adapter device name, MAX length can contain up to 32 characters.

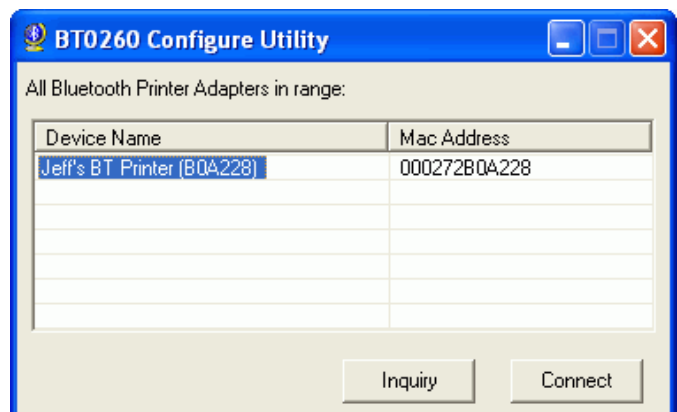
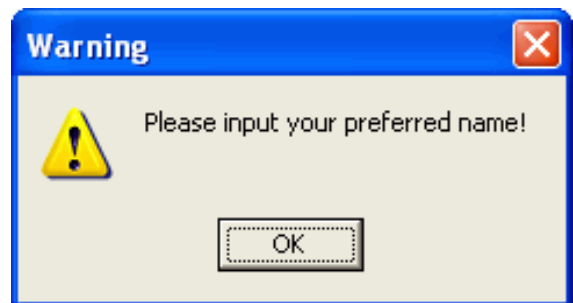
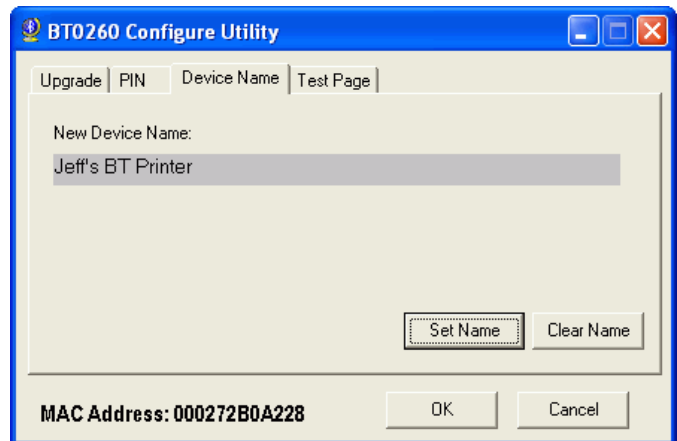
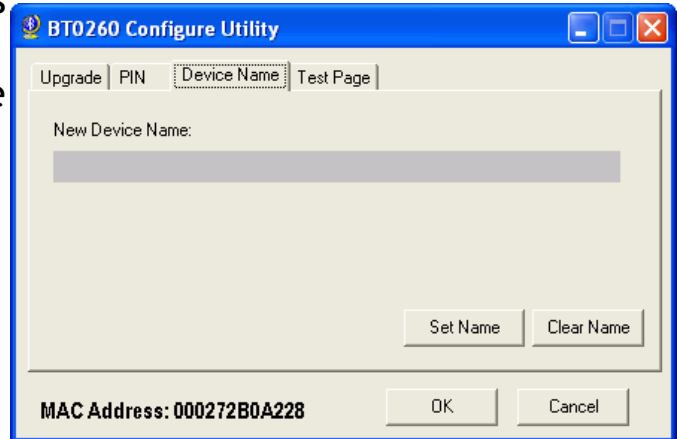
If you enter “**Jeff’s BT Printer**” and click **Set Name** button, destination adapter will have the name as : “**Jeff’s BT Printer (B0A228)**”

Note : B0A228 are the last 6 hexadecimal digits of Mac address.

Warning message shows if no name was input.

When you inquiry again you will see new name :
Jeff’s BT Printer (B0A228)

Click **Clear Name** will restore name rule to default **BT-PRT-B0A228**.



4. ENABLE/DISABLE TESTING PAGE

Testing page feature is disabled by default, you can enable it to test whether BT-0260 adapter can print to printer correctly or not.

When it is enabled, the steps to print testing page are :

Step 1:

Power off all devices.

Step 2 :

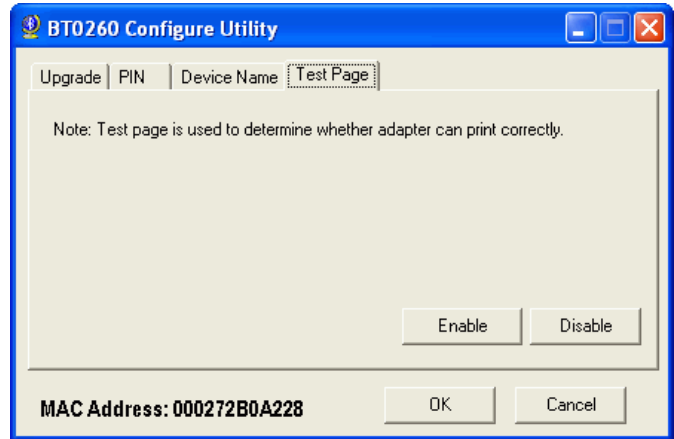
Connect BT-0260 adapter to USB or parallel port of printer.

Step 3 :

Power on printer.

Step 4 :

Power on BT-0260 adapter, one testing page will be printed on your printer.



RESTORE DEVICE DRIVER

After finish running Utility program, you must restore Bluetooth driver to original CSR driver for normal operation.

Step 1 :

Click **Start** on task bar.

Click **Control Panel**.

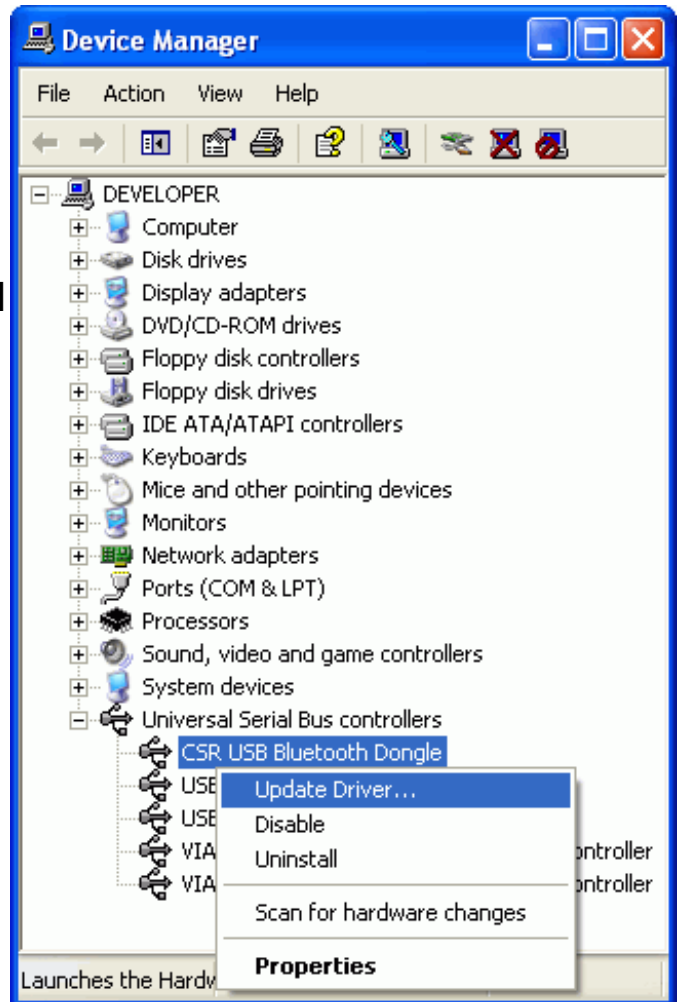
Double-click **System** icon.

Select **Hardware** page.

Click **Device Manager** button, expand plus sign on **Universal Serial Bus** branch.

Right click on **CSR USB Bluetooth Dongle** item.

Select **Update Driver....**



Step 2 :

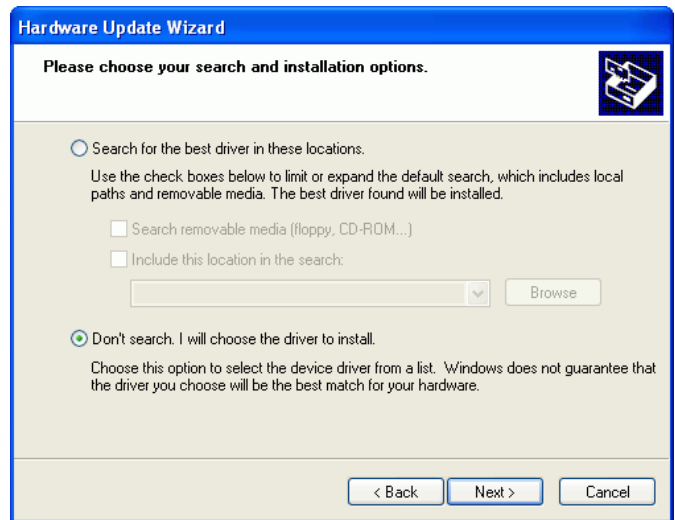
Select **Install from a list or specific location (Advanced)** option.

Click **Next** button.



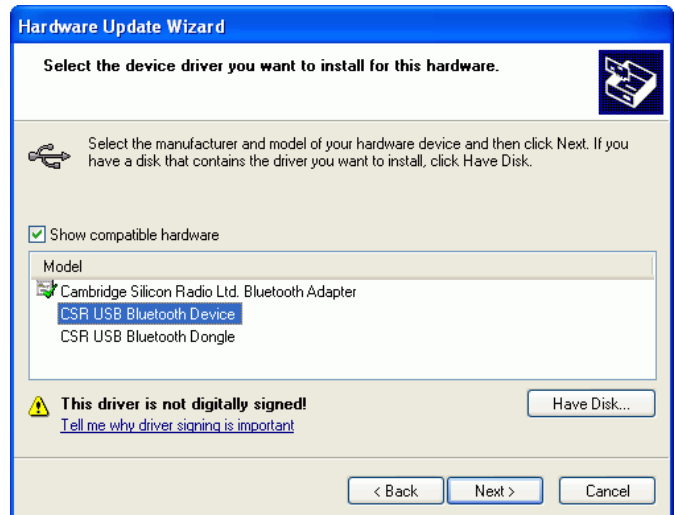
Step 3 :

Select **Don't Search, I will choose the driver to install.**
Click **Next.**



Step 4 :

Select **CSR USB Bluetooth Device.**
Click **Next.**



Step 5 :

Click **Finish** button to complete.



Step 6 :

In Device Manager, you can see the original Widcomm Bluetooth driver - **CSR USB Bluetooth Device** is back.

