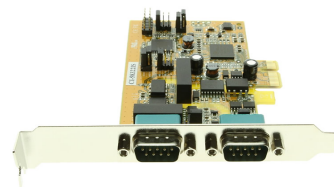


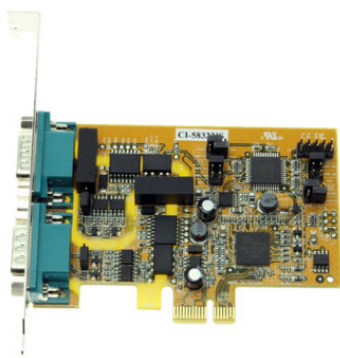


# 2 Port PCI Express RS422/485 w/ Optical Isolation & Surge Suppression



PCI Express Card - with Device Protection

Model No. SG-  
PCIE2S422485IS



The SG-PCIE2S422485IS 2 Port RS422 RS485 PCI Express card is designed for easy installation for PC, Work Stations, Thin Client or Server serial applications. Instantly provides 2 DB9 ports for additional serial communication and adds Optical Isolation and Surge Protection to your devices.

- Ideal for Server serial applications.
- Has protection against electrical dangers for serial devices connected to it.
- Instantly provides RS422 / 485 Serial port expansion via the PCI Express bus.
- With easy install, the PCI Express card is compatible with new and legacy RS422 / 485 devices.

Interested? [LEARN MORE](#) →

## Questions? Speak to an engineering expert today!

Our on site engineers are ready to help you with your build.

☎ [1-727-209-1300](tel:1-727-209-1300) (Local) ✉ [expert@coolgear.com](mailto:expert@coolgear.com)



**We Speak Your Speak** - When you reach out to our support, you'll find yourself in the hands of a solution-oriented, knowledgeable expert ready to answer whatever question you throw at them. Go ahead, test us.

**We're Ready For Integration, Every Time.** - Coolgear streamlines the task of selecting charging and connectivity products. For over 20 years our rugged, off-the-shelf USB hubs and serial products are ready to go for your next project.

**Within every great machine, lives Coolgear.** - At Coolgear, we're just as passionate about building great products as you are. That's why we aim to meet or exceed your build specs every time.,

**Advanced Engineering** - Coolgear painstakingly sources high-quality components, oversees all manufacturing methods, and conducts rigorous testing to ensure all our products are industrial-grade. This means greater duty cycle, zero data loss, and longer lasting builds. We promise.,

# PRODUCT SPECIFICATIONS

Looking for product documentation?  
[View CAD Models, Data sheet and Drawings here >](#)



Software	OS Support	Win-2000, Linux, Mac OSX, Win 10, Win 7, Win 8, Win Vista, Win XP
Serial Attributes	Serial Standards	RS422/RS485
Mechanical	Ports	2 Serial Ports
	Warranty	1 year from date of purchase.
	UPC	736983900098
Other Data	Connector	DB9 Male w/ Nuts, PCIe 1x
	Weight	.35 lbs
	Dimensions	9 × 6.25 × 2 in

## Ready to Buy? Let's get to work!

Purchase order lets set you up.

Online with Credit card Orders shipped same day!

\*orders placed prior to 3:30pm EST

 **1-888-688-2188 (Toll free)**

 **[sales@coolgear.com](mailto:sales@coolgear.com)**