



4 Port USB to RS485 High Speed Adapter w/12V DC Power Supply



USB to RS485 Adapter with Failed Signal Check

Model No. CG-UHS4P485



[View more images here >](#)

The USB to RS485 adapter installs automatically once connected to a USB port. When a serial device is connected to it, it will check for a fail signal indicated by a RED LED. With many application uses, this USB to RS485 serial adapter is mountable and includes an attached USB cable. This USB to RS485 adapter provides instant connectivity to communication devices for factory automation equipment, multi-drop data collection devices, barcode readers, time clocks, scales, and more in harsh, rugged environments

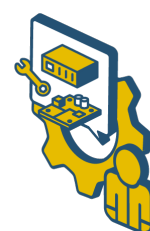
- LEDs indicate operation mode, port status, activity and error for easy port monitoring and diagnosis
- Serial port protected with surge protection of 15kV
- Includes 12VDC power adapter with locking screw terminal power jack for reliable connection
- Each RS-485 port with 2kb receive buffer and 2kb transmit buffer

Interested? LEARN MORE →

Questions? Speak to an engineering expert today!

Our on site engineers are ready to help you with your build.

☎ **1-727-209-1300** (Local) ✉ **expert@coolgear.com**



We Speak Your Speak - When you reach out to our support, you'll find yourself in the hands of a solution-oriented, knowledgeable expert ready to answer whatever question you throw at them. Go ahead, test us.

We're Ready For Integration, Every Time. - Coolgear streamlines the task of selecting charging and connectivity products. For over 20 years our rugged, off-the-shelf USB hubs and serial products are ready to go for your next project.

Within every great machine, lives Coolgear. - At Coolgear, we're just as passionate about building great products as you are. That's why we aim to meet or exceed your build specs every time.,

Advanced Engineering - Coolgear painstakingly sources high-quality components, oversees all manufacturing methods, and conducts rigorous testing to ensure all our products are industrial-grade. This means greater duty cycle, zero data loss, and longer lasting builds. We promise.,

PRODUCT SPECIFICATIONS

Looking for product documentation?
[View CAD Models, Data sheet and Drawings here >](#)



Power	Input Voltage	+9~48V DC
	Adapter Power	External
Compliance	Certifications	RoHS , TAA
	Color	Black
Physical Characteristics	Item Dimensions (L × W × H)	63 x 85 x 23mm (WxLxH)
	Item Weight	.46 lbs.
	Mounting Style	Din-Rail, Surface Mount
	Ports	4 Serial Ports
Serial Attributes	Serial Standards	RS485
	Serial Ports	4
Software	OS Support	Win-2000, Win XP, Win Vista, Win 7, Win 8, Win 8.1, Win 10, Linux, Mac OSX
Environmental	Operating Temperature	0 to 60C
Performance & Safety	Isolated/Surge Protected	Yes
	Supported Data Speed	300bps to 921.6kbps
	UPC	045079161191
Other Data	Connector	6-Pin Terminal Block
	USB Interface	USB 2.0
	Weight	1.18 lbs
	Dimensions	11.250 × 5.750 × 2.375 in

Ready to Buy? Let's get to work!

[Purchase order](#) lets set you up.

[Online with Credit card](#) Orders shipped same day!

*orders placed prior to 3:30pm EST

 [1-888-688-2188](tel:1-888-688-2188) (Toll free)

 sales@coolgear.com