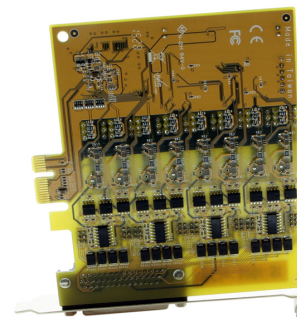




PCI Express to 8-Port RS422/485 Serial Optical Iso / Surge Protection



Windows 10 Optically Isolated PCIe to RS422/485 Card

Model No. CG-8PClei-SI



This PCIe Add on Card extends your systems RS422 or RS485 serial device connections by 8! Using this PCI Express Card interface and a DB44 to DB-9(8x) octopus cable connection enables Optical Isolation, ESD, and Surge protections to you serial signal devices. All cable connections are screw lock mechanisms for secure point to point contact.

- Provides Optical Isolation, ESD, and Surge protection
- Provides 8 additional industrial serial COM ports
- Easily installed and configured in your system
- Each port is with 256 bytes FIFO for transmit and receive

Interested? [LEARN MORE →](#)



[View more
images here >](#)

Questions? Speak to an engineering expert today!

Our on site engineers are ready to help you with your build.

☎ [1-727-209-1300](tel:1-727-209-1300) (Local) ✉ expert@coolgear.com



We Speak Your Speak - When you reach out to our support, you'll find yourself in the hands of a solution-oriented, knowledgeable expert ready to answer whatever question you throw at them. Go ahead, test us.

We're Ready For Integration, Every Time. - Coolgear streamlines the task of selecting charging and connectivity products. For over 20 years our rugged, off-the-shelf USB hubs and serial products are ready to go for your next project.

Within every great machine, lives Coolgear. - At Coolgear, we're just as passionate about building great products as you are. That's why we aim to meet or exceed your build specs every time.,

Advanced Engineering - Coolgear painstakingly sources high-quality components, oversees all manufacturing methods, and conducts rigorous testing to ensure all our products are industrial-grade. This means greater duty cycle, zero data loss, and longer lasting builds. We promise.,

PRODUCT SPECIFICATIONS

Looking for product documentation?
[View CAD Models, Data sheet and Drawings here >](#)




Identifier	Product Type	Add-on Cards > PCI Card > Serial
Physical Characteristics	Color	Black, Green
	Screw Lock Compatible	Yes
Serial Attributes	Serial Standards	RS422/RS485
	Serial Ports	8
Software	OS Support	Win 7, Win 8, Win 8.1, Win 10, Linux
Hardware	Chipset	EXAR XR17V358
Performance & Safety	Isolated/Surge Protected	Yes
	Connector	DB44, DB9 Male
Other Data	UPC	736983902818
	Weight	1.337 lbs
	Dimensions	8.250 × 5.625 × 2.250 in

Ready to Buy? Let's get to work!

Purchase order lets set you up.

Online with Credit card Orders shipped same day!

*orders placed prior to 3:30pm EST

 [1-888-688-2188 \(Toll free\)](tel:1-888-688-2188)

 sales@coolgear.com