

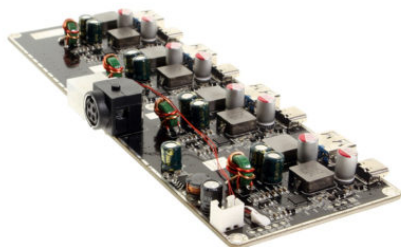


USB-PD Integrator Board for 240W Charging - USB- C/A Multi-Port PCBA



ODM High Power USB Type-C 240W Charging Integration PCBA

Model No. CGL-4P240BRD



Coolgear's multi-port USB Type-C / USB Type-A High powered circuit board is designed for power hungry USB devices. Integrate this product into your own design for 240W of high power charging.

- Meant for high power charging applications
- 4 USB-C and 4 USB-A charging ports
- Supports USB-PD voltages from 5V~20V
- Fast Charge OLD and NEW devices simultaneously with Type-C and Type-A ports

Interested? [LEARN MORE →](#)



Questions? Speak to an engineering expert today!

Our on site engineers are ready to help you with your build.

☎ [1-727-209-1300](tel:1-727-209-1300) (Local) ✉ expert@coolgear.com



We Speak Your Speak - When you reach out to our support, you'll find yourself in the hands of a solution-oriented, knowledgeable expert ready to answer whatever question you throw at them. Go ahead, test us.

We're Ready For Integration, Every Time. - Coolgear streamlines the task of selecting charging and connectivity products. For over 20 years our rugged, off-the-shelf USB hubs and serial products are ready to go for your next project.

Within every great machine, lives Coolgear. - At Coolgear, we're just as passionate about building great products as you are. That's why we aim to meet or exceed your build specs every time.,

Advanced Engineering - Coolgear painstakingly sources high-quality components, oversees all manufacturing methods, and conducts rigorous testing to ensure all our products are industrial-grade. This means greater duty cycle, zero data loss, and longer lasting builds. We promise.,

PRODUCT SPECIFICATIONS

Looking for product documentation?
[View CAD Models, Data sheet and Drawings here >](#)




Identifier	UPC	045079161078
Performance	Over Current Protection	Y
	Over Voltage Protection	Y
Power	Over Current Protection	Y
	Over Voltage Protection	Y
Mechanical	Color	Black
	Item Dimensions (L x W x H)	174.10 x 61.84 x 17.56mm (LxWxH)
	Item Weight	.19 lbs.
	Connector	USB Type-A Female, USB Type-C Female
Other Data	Chip Model	Cypress Chip
	Weight	0.19 lbs
	Dimensions	6.85 x 2.43 x .691 in


Ready to Buy? Let's get to work!

Purchase order lets set you up.

Online with Credit card Orders shipped same day!

*orders placed prior to 3:30pm EST

 [1-888-688-2188](tel:1-888-688-2188) (Toll free)

 sales@coolgear.com