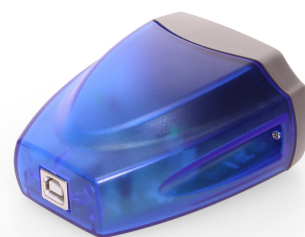




Single Port USB 2.0 to RS-422 / RS-485 DB-9 Serial Adapter w/ Surge Protection & Optical Isolation



USB to DB9 RS485 Serial Isolation

Model No. USB-COMi-SI



Isolated industrial USB to Serial port on USB connect RS-422 and RS485 devices, used in industrial environment. With RS-485 the data direction is controlled by the port, without further action from the software.

- Optically Isolated your serial signal connection up to 2000V DC.
- An ideal solution for notebook or PC serial communication.
- Provides up to 25KV surge protection from ESD occurrences.
- Supports Automatic transmit and receive control for 2-wire RS-485 half-duplex mode.

Interested? [LEARN MORE →](#)



[View more images here >](#)

Questions? Speak to an engineering expert today!

Our on site engineers are ready to help you with your build.

☎ [1-727-209-1300](tel:1-727-209-1300) (Local) ✉ expert@coolgear.com



We Speak Your Speak - When you reach out to our support, you'll find yourself in the hands of a solution-oriented, knowledgeable expert ready to answer whatever question you throw at them. Go ahead, test us.

We're Ready For Integration, Every Time. - Coolgear streamlines the task of selecting charging and connectivity products. For over 20 years our rugged, off-the-shelf USB hubs and serial products are ready to go for your next project.

Within every great machine, lives Coolgear. - At Coolgear, we're just as passionate about building great products as you are. That's why we aim to meet or exceed your build specs every time.,

Advanced Engineering - Coolgear painstakingly sources high-quality components, oversees all manufacturing methods, and conducts rigorous testing to ensure all our products are industrial-grade. This

means greater duty cycle, zero data loss, and longer lasting builds. We promise.,
Coolgear | Charging & Connectivity Experts
www.coolgear.com Visit coolgear.com/support for any questions & inquires.

PRODUCT SPECIFICATIONS

Looking for product documentation?

[View CAD Models, Data sheet and Drawings here >](#)



Compliance	Country of Origin	Taiwan
	Certifications	REACH , RoHS , TAA
Physical Characteristics	Color	Blue/Gray
	Ports	1 Serial Port
	Screw Lock Compatible	Yes
Serial Attributes	Serial Standards	RS422, RS422/RS485, RS485
	OS Support	Win 7, Win 8, Win 10, Win 11, Linux, Mac OSX
Software	Operating Temperature	0C to 55C
Environmental	Chipset	FTDI
Hardware	Isolated/Surge Protected	Yes
Performance & Safety	Connector	DB9 Male w/ Nuts
	Chip Model	FT231XQ-R, MAX3089E
	USB Interface	USB 2.0
	Warranty	1 year from date of purchase
	Weight	.4 lbs
Other Data	Dimensions	4 × 4 × 2.25 in

Ready to Buy? Let's get to work!

[Purchase order](#) lets set you up.

[Online with Credit card](#) Orders shipped same day!

*orders placed prior to 3:30pm EST

☎ [1-888-688-2188](tel:1-888-688-2188) (Toll free)

✉ sales@coolgear.com