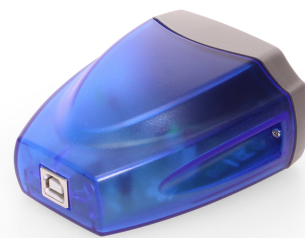




# Single Port USB 2.0 to RS-422 / RS-485 DB-9 Serial Adapter w/ Surge Protection & Optical Isolation



USB to DB9 RS485 Serial Isolation

Model No. USB-COMi-SI



Isolated industrial USB to Serial port on USB connect RS-422 and RS485 devices, used in industrial environment. With RS-485 the data direction is controlled by the port, without further action from the software.

- Optically Isolated your serial signal connection up to 2000V DC.
- An ideal solution for notebook or PC serial communication.
- Provides up to 25KV surge protection from ESD occurrences.
- Supports Automatic transmit and receive control for 2-wire RS-485 half-duplex mode.

Interested? [LEARN MORE →](#)



[View more images here >](#)

## Questions? Speak to an engineering expert today!

Our on site engineers are ready to help you with your build.

☎ [1-727-209-1300](tel:1-727-209-1300) (Local) ✉ [expert@coolgear.com](mailto:expert@coolgear.com)



**We Speak Your Speak** - When you reach out to our support, you'll find yourself in the hands of a solution-oriented, knowledgeable expert ready to answer whatever question you throw at them. Go ahead, test us.

**We're Ready For Integration, Every Time.** - Coolgear streamlines the task of selecting charging and connectivity products. For over 20 years our rugged, off-the-shelf USB hubs and serial products are ready to go for your next project.

**Within every great machine, lives Coolgear.** - At Coolgear, we're just as passionate about building great products as you are. That's why we aim to meet or exceed your build specs every time.,

**Advanced Engineering** - Coolgear painstakingly sources high-quality components, oversees all manufacturing methods, and conducts rigorous testing to ensure all our products are industrial-grade. This

means greater duty cycle, zero data loss, and longer lasting builds. We promise.,  
Coolgear | Charging & Connectivity Experts  
[www.coolgear.com](http://www.coolgear.com) Visit [coolgear.com/support](http://coolgear.com/support) for any questions & inquires.



# PRODUCT SPECIFICATIONS

Looking for product documentation?

[View CAD Models, Data sheet and Drawings here >](#)



<b>Environmental</b>	<b>Operating Temperature</b>	0C to 55C
<b>Performance</b>	<b>Isolated/Surge Protected</b>	Yes
<b>Hardware</b>	<b>Chipset</b>	FTDI
<b>Software</b>	<b>OS Support</b>	Win 11, Linux, Mac OSX, Win 10, Win 7, Win 8
<b>Serial Attributes</b>	<b>Serial Standards</b>	RS422, RS422/RS485, RS485
	<b>USB Type</b>	USB 2.0
<b>USB</b>	<b>Isolated/Surge Protected</b>	Yes
	<b>Screw Lock Compatible</b>	Yes
<b>Mechanical</b>	<b>Color</b>	Blue/Gray
	<b>Ports</b>	1 Serial Port
<b>Compliance</b>	<b>Country of Origin</b>	Taiwan
	<b>Compliance</b>	TAA
	<b>Connector</b>	DB9 Male w/ Nuts
	<b>Chip Model</b>	FT231XQ-R, MAX3089E
<b>Other Data</b>	<b>Warranty</b>	1 year from date of purchase
	<b>Weight</b>	.4 lbs
	<b>Dimensions</b>	4 × 4 × 2.25 in

## Ready to Buy? Let's get to work!

**Purchase order** lets set you up.

**Online with Credit card** Orders shipped same day!

\*orders placed prior to 3:30pm EST

☎ **1-888-688-2188 (Toll free)**

✉ **[sales@coolgear.com](mailto:sales@coolgear.com)**