



8 Port USB to RS- 232/422/485 Octal Adapter

Product Manual



Coolgear, Inc.

Version 1.1

April 2018

Model Number: USB-8COMi-RM

Revision History

Revision	Date	Author	Comments
1.1	04/6/2018	Coolgear	New Manual

About this document

This product manual outlines installation and features of the USB-8COMi-RM 8 Port USB to RS-232/422/485 Octal Adapter.

Scope

The scope of this manual is to give the user of the product an understanding of its use with detailed diagrams and verbiage. The manual allows the users to apply the product to their application.

Intended Audience

This product is intended for use in numerous industries including but not limited to applications such as; POS, factory automation equipment, multi-drop data collection devices, bar code readers, time clocks, scales, data entry terminals, PC to PC long distance communications, ATMs and serial communication in harsh environments.

Product Support

support@coolgear.com

Table of Contents

1. Introduction	4
1.1 Features	4
2. Hardware Installation	5
3. Windows 7 / Vista / 2003 / XP / 2000 Driver Installation	7
4. Check Installation	8
4.1 Change COM Port Properties & COM Port Number	8
4.2 Uninstalling Windows 2003 / XP / 2000 Drivers.....	8
5. Uninstalling Windows 7 or Vista Drivers	11
6. Signal Pin-outs & Wiring	14
6.1 RS-422 Signal Wiring	15
6.2 RS-485 Signal Wiring	16
7. Notes, Tips, and Warnings	17
8. Supporting References	19

Table of Figures

Figure 1 – Driver Installation.....	7
Figure 2, 3, 4, 5, 6, 7 – Uninstalling 2003/XP/2000 Windows Drivers.....	9-10
Figure 8, 9, 10, 11, 12 – Uninstalling Windows 7 or Vista Drivers.....	11-13
Figure 13, 14 – RS-422 Signal Wiring.....	15
Figure 15, 16 – RS-485 Signal Wiring.....	16

1. Introduction

The USB-8COMi-RM USB to Octal Serial Adapter is designed to make serial port expansion quick and simple. Connecting to a USB port on your computer or USB hub, the USB Serial Adapter instantly adds eight RS-232/422/485 multi-electrical interface serial communication ports to your system.

WEIGHT	2.468 lbs
DIMENSIONS	10.11(L) x 5.80(W) x 1.73in(H)
CABLE LENGTH	3ft.
UPC	729440690984
WARRANTY	1 year from date of purchase
COLOR	Black
PORTS	(8) DB-9 Male Serial Port

1.1 Features

- TAA Compliant
- Adds 8 high speed RS-232 / 422 / 485 serial ports.
- 128 byte transmit buffer for high speed data throughput.
- Requires no IRQ, DMA, I/O port.
- Data rates: 300 bps to 921.6K bps.
- Serial Connector: one DB-9 male connector.
- Auto transmitting of buffer control for 2-wire RS-485 half-duplex operation.
- Termination resistors installed on-board.
- RS-232 data signals: DCD, RxD, TxD, DTR, GND, DSR, RTS, CTS, RI.
- RS-422 data signals: Tx-, Tx+, Rx+, Rx-, GND, RTS-, RTS+, CTS+, CTS-.
- RS-485 data signals: Tx-, Tx+, Rx+, Rx-(4 wire) and data-, data+ (2 wire).
- Monitor LEDs of TxD, RxD indicating port status.
- AC 100V – 240V input for DC 5V, 4A switching power supply.
- Virtual COM port drivers available for Windows 7, Vista, 2003, XP, 2000.
- Input: AC 100V ~ 240V, 47 – 63 Hz.
- Output: DC 5.0V 4A.

2. Hardware Installation

Outside the unit, there are eight 4-pin DIP switches which are set to select the mode of operation. You will need to set the switch settings to RS-232 mode, or RS-422 or RS-485 mode as per the requirements of your application.

Note: You need to install driver first, prior to hardware installation. After the setting of DIP switches and connecting power cord to the adapter, you then plug the adapter to USB port to start driver installation.

The Mode Block Configuration Settings are listed as follows:

SW1 (Port-1), SW2 (Port-2), SW3 (Port-3), SW4 (Port-4)

SW5 (Port-5), SW6 (Port-6), SW7 (Port-7), SW8 (Port-8)

	Operation Mode	S1	S2	S3	S4
RS-232	Standard RS-232 Mode	OFF	ON	ON	ON
RS-422	4 wire with Handshaking	ON	ON	ON	ON
RS-485	Full Duplex (4 wire)	ON	OFF	ON	ON
	Half Duplex (2 wire) - With Echo	ON	OFF	OFF	ON
	Half Duplex (2 wire) - Without Echo	ON	OFF	OFF	OFF

JP1 (Port-1), JP2 (Port-2), JP3 (Port-3), JP4 (Port-4), JP5 (Port-5), JP6 (Port-6), JP7 (Port-7), JP8 (Port-8) for Termination and Biasing Option Configuration.

Inside the unit, there are eight 2 x 7 (14 pin) header blocks which are jumpered to enable Tx, Rx, CTS 120 Ohm termination resistors and Tx, Rx 750 Ohm BIASing resistor.

You will need to open up the metal case and set the jumper setting for RS-422 mode or RS-485 mode as per the requirements of your application.

Settings are listed as follows:

Jumper	Function
1-2	Tx Termination of 120 Ohm. This jumper should always be populated for RS-485 mode.
3-4	Pull-up Tx+ to VCC by 750 Ohm Bias resistor. This jumper should be populated for pull-up Tx+.
5-6	Pull-down Tx- to GND by 750 Ohm Bias resistor. This jumper should be populated for pull-down Tx- .
7-8	Rx Termination of 120 Ohm. This jumper should always be populated for RS-422 mode.
9-10	Pull-up Rx+ to VCC by 750 Ohm Bias resistor. This jumper should be populated for pull-up Rx+
11-12	Pull-down Rx- to GND by 750 Ohm Bias resistor. This jumper should be populated for pull-down Rx- .
13-14	CTS Termination of 120 Ohm. This jumper should always be populated for RS-422 mode.

Note: Sometimes, when operating in RS-422 or RS-485, it is necessary to configure termination and biasing of the data transmission lines. Generally this must be done in the cabling, since this depends on the installation of connections. Before applying the option, check your cable specification for proper impedance matching.

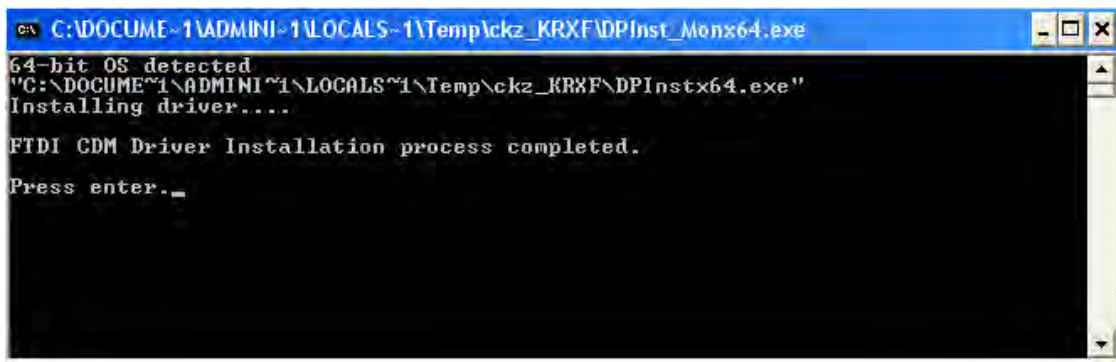
3. Windows 7 / Vista / 2003 / XP / 2000 Driver Installation

You need to have administrator privileges to install any new drivers under Windows 7/ Vista / 2003 / XP / 2000. To install the driver or update the configuration please log onto Windows as "Administrator" or ask your system administrator to install the USB-COM driver.

Note: You need to install driver first, prior to hardware installation. Do not connect the USB-to-Serial Adapter to the USB port of your computer, before you finish driver installation.

Please proceed with the following steps to install the driver:

1. Insert the "USB COM Series Driver and Utility" CD into your CD-ROM.
2. The "USB COM Series Driver and Utility CD" dialog box appears.
3. Under "Driver Installation", double click "Windows 7, Vista, 2003, XP, 2000 driver" to install the device driver.
4. The USB COM install program will auto-detect the OS type and install the driver automatically. (Note: in Windows 7 or Vista OS you will find another dialog box, please click on "OK" to confirm the drivers install program).



```
C:\DOCUMENTS\ADMINI~1\LOCALS~1\Temp\ckz_KR8FADPInst_Monx64.exe
64-bit OS detected
"C:\DOCUMENTS\ADMINI~1\LOCALS~1\Temp\ckz_KR8FADPInstx64.exe"
Installing driver....
FTDI CDM Driver Installation process completed.
Press enter._
```

Figure 1

5. After the message "FTDI CDM Driver installation process completed" appears, press "Enter" to complete the driver installation.
6. Plug in the USB to Serial Adapter to the USB port of your computer. Windows will finish installing the driver files.

4. Check Installation

You can now verify the installation has been completed successfully by looking under Device Manager of the System Properties screen. (Go there by Start-Setting- Control Panel-System Properties-Hardware-Device Manager.

The device should have installed as a "USB Serial Port (COMx)" attached to "USB Serial Converter (A/B or A/B/C/D)".

4.1 Change COM Port Properties & COM Port Number

This feature is particularly useful for programs, such as HyperTerminal, which only work with COM1 through COM4. Please ensure that you do not change the COM Port Number already in use.

To change the virtual COM port properties:

- Select the "USB Serial Port"
- Click "Properties".
- Select "Port Setting" and "Advanced".
- Click the drop down arrow on COM Port Number and scroll to the required COM port. Select "OK".
- Return to the Device Manager Screen. You will see that the USB Serial Port installation has been changed to the new COM Port Number.

4.2 Uninstalling Windows 2003 / XP / 2000 Drivers

Please proceed with the following steps to uninstall the 2003/XP/2000 driver:

1. Insert the "USB COM Series Driver and Utility" CD into your CD-ROM.
2. The "USB COM Series Driver and Utility CD" dialog box appears.
3. Under "Driver Uninstalling", double click "Windows 2003, XP, 2000 driver uninstall" to uninstall the device driver.
4. When following dialog box appears, double click "Clean System" to uninstall the 2003/XP/2000 drivers.



Figure 2

5. You need to disconnect all USB to Serial Adapters from your PC, when the message below appears. Double click "OK" to start uninstalling Windows 2003/XP/2000 USB to Serial drivers.



Figure 3

6. Double click "Yes" to confirm it.

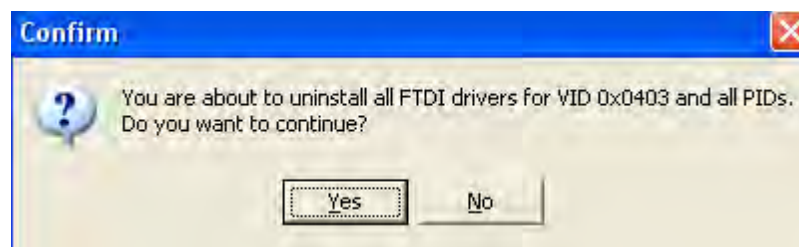


Figure 4

7. Click "No" to proceed.

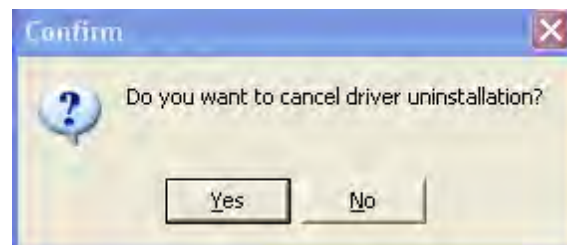


Figure 5

8. When the message **“Status: System clean completed”** appears, double click **“Exit”** to complete the USB to serial drivers uninstall.



Figure 6

9. Press **“Start”** button and select **“Control Panel”**.
10. Open the Add or Remove program.

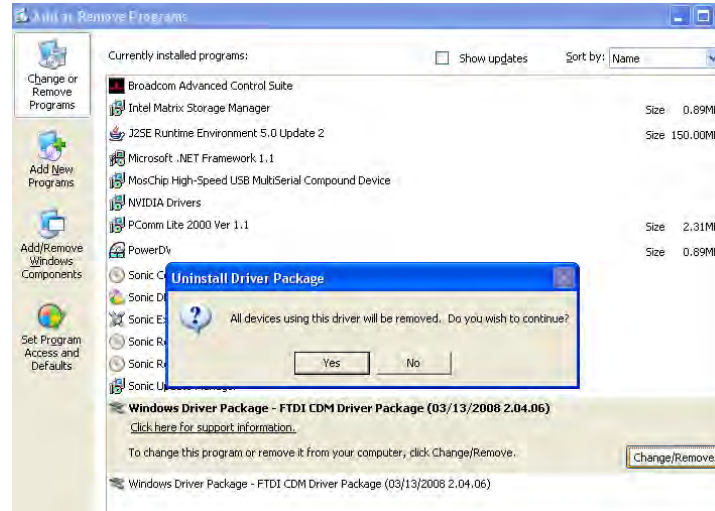


Figure 7

11. Remove the first **“Windows Driver Package – FTDI CDM Driver Package (...)”**.
12. Click **“Change/Remove”** and **“Yes”** to remove the first Windows Driver Package.
13. Remove the second **“Windows Driver Package – FTDI CDM Driver Package (...)”**.
14. Click **“Change/Remove”** and **“Yes”** to remove the second Windows Driver Package.
15. Reboot the computer to complete the driver uninstall.

5. Uninstalling Windows 7 or Vista Drivers

Windows 7 and Vista have many new security features. You need to proceed with the following steps to uninstall the Vista driver:

1. The USB to serial devices must connect to the PC.
2. Press “Start” button and select “Control Panel”.
3. Select “Classic View” from the top left hand corner and then “System” from the list.
4. Select “Device Manager” from the top left hand corner.

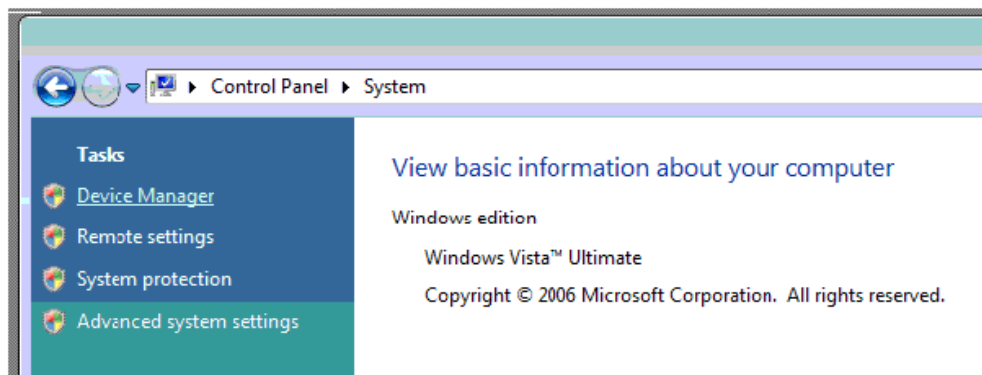


Figure 8

5. Locate your device under the ports (COM & LPT) section and right click on it to bring up the menu shown.

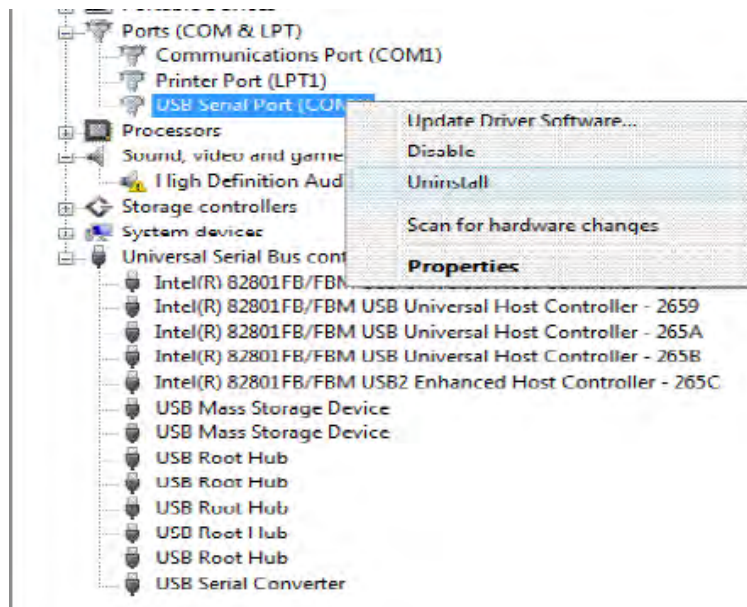


Figure 9

6. Select uninstall and be sure to click the box for “Delete the driver software for this device” in the next window and press “OK”.

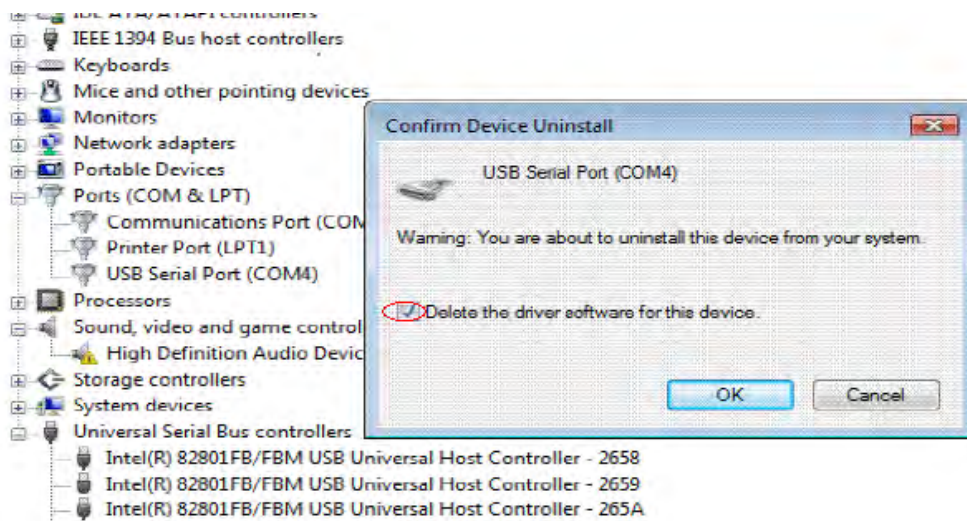


Figure 10

Note: if you have more than one USB Serial Port (COMx) installed in your PC, you need to repeat from step 5 to step 6 to delete the driver software for each port.

7. Locate your Device under the Universal Serial Bus Controllers section, and right click on it to bring up the menu shown.

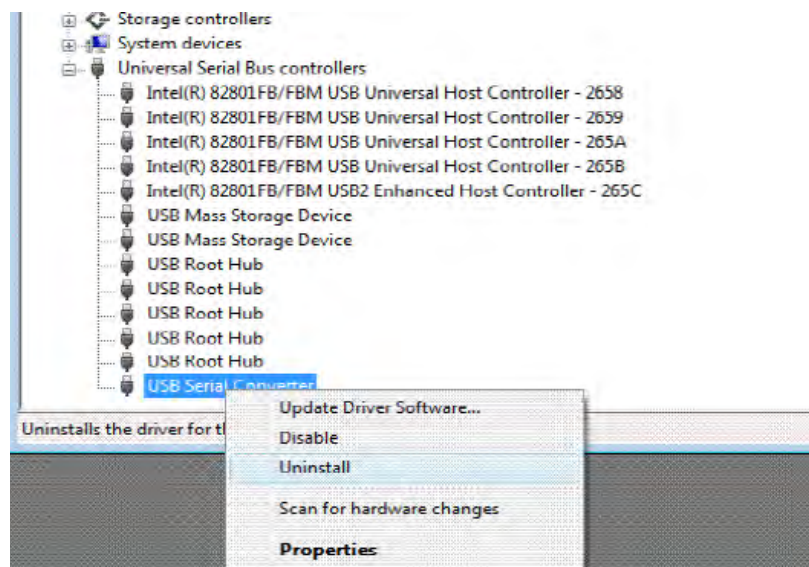


Figure 11

8. Select uninstall and be sure to click the box for “Delete the driver software for this device” in the next window and press “OK”.

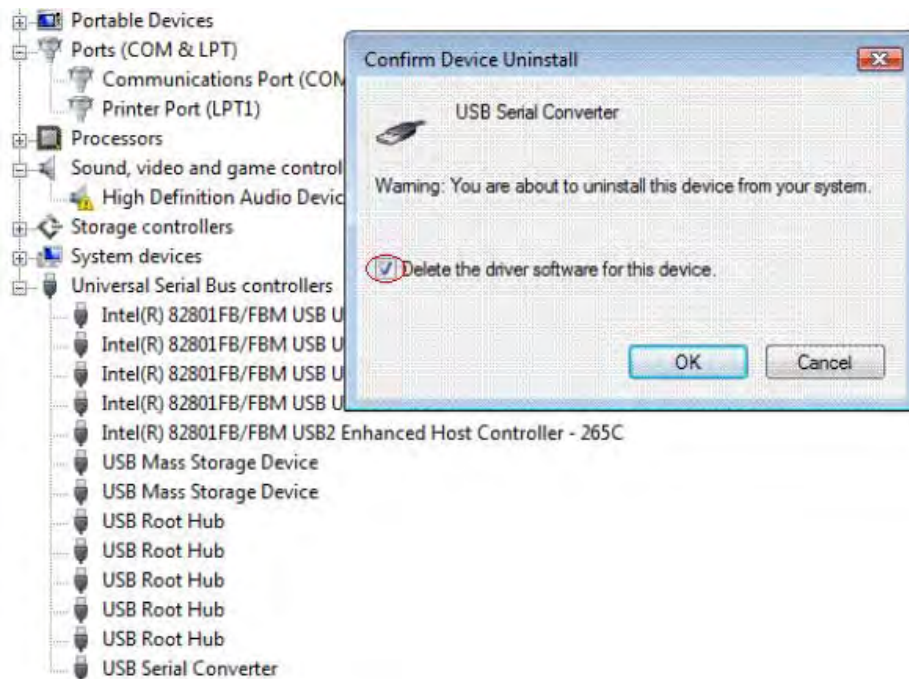


Figure 12

Note: if you have more than one USB Serial Converter installed in your PC, you need to repeat step 7 and step 8 to delete the driver software for all devices.

6. Signal Pin-outs & Wiring

RS-232 Signal Pin-outs of DB-9 Male

Pin 1	DCD
Pin 2	RxD
Pin 3	TxD
Pin 4	DTR
Pin 5	GND
Pin 6	DSR
Pin 7	RTS
Pin 8	CTS
Pin 9	RI

RS-422 Signal Pin-outs of DB-9 Male

Pin 1	TxD- (A)
Pin 2	TxD+ (B)
Pin 3	RxD+ (B)
Pin 4	RxD – (A)
Pin 5	GND
Pin 6	RTS- (A)
Pin 7	RTS- (B)
Pin 8	CTS+ (B)
Pin 9	CTS- (A)

6.1 RS-422 Signal Wiring

Point-to-Point 4 Wire Full Duplex

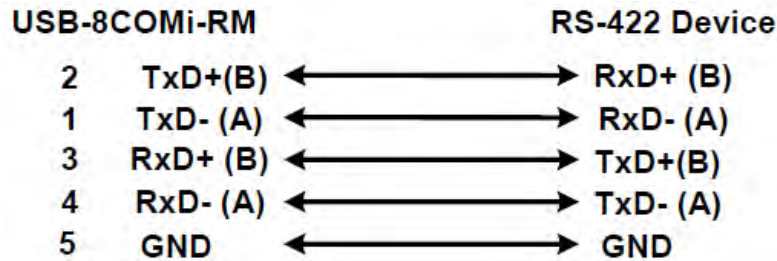


Figure 13

RS-422 with Handshaking

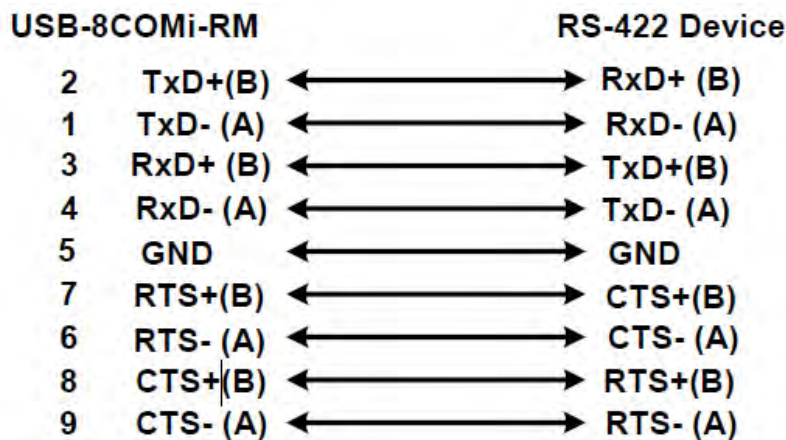


Figure 14

RS-485 4-Wire (Full duplex) Signal Pin-outs of DB-9 Male

Pin 1	Tx- (A)
Pin 2	Tx+ (B)
Pin 3	Rx+ (B)
Pin 4	Rx- (A)
Pin 5	GND

RS-485 2-Wire (Half duplex) Signal Pin-outs of DB-9 Male

Pin 1	Data- (A)
Pin 2	Data+ (B)
Pin 5	GND

6.2 RS-485 Signal Wiring

Point-to-Point 4-Wire Full Duplex

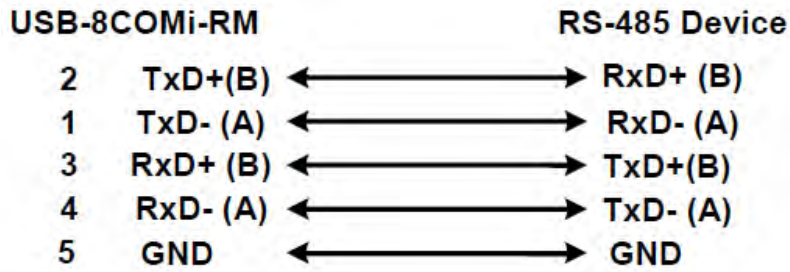


Figure 15

Multi-drop RS-485 2-Wire Half-duplex

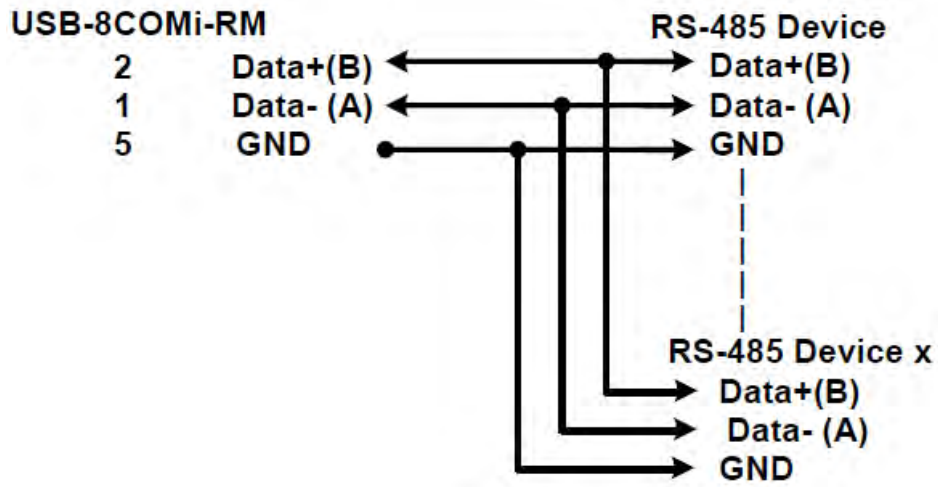


Figure 16

7. Notes, Tips, and Warnings

Note

Note: You need to install driver first, prior to hardware installation. After the setting of DIP switches and connecting power cord to the adapter, you then plug the adapter to USB port to start driver installation.

Note: Sometimes, when operating in RS-422 or RS-485, it is necessary to configure termination and biasing of the data transmission lines. Generally this must be done in the cabling, since this depends on the installation of connections. Before applying the option, check your cable specification for proper impedance matching. Reference section 2.

Note: You need to install driver first, prior to hardware installation. Do not connect the USB-to-Serial Adapter to the USB port of your computer, before you finish driver installation. Reference section 3.

Note: if you have more than one USB Serial Converter installed in your PC, you need to repeat step 7 and step 8 to delete the driver software for all devices. Reference section 5 step 8.

Tip

N/A

Warning

N/A

Safety

- Read the entire Product Manual before implementing this product for your application. This manual contains important information about electrical connections that must be followed for safe and proper operation.
- Inspect the product closely for visual defects before putting it to use.
- Keep away from areas where moisture builds, this product contains electrical components that can be damaged by moisture build up, this can adversely affect your equipment connected to it.
- Do not disassemble the product. Handling the product's internal components can expose it to ESD (Electro-Static Discharge) hazards that can affect the function of the device.

- If this product is not functioning properly, email our support team at support@coolgear.com.

8. Supporting References

Document	Link
Website Product Page	https://www.coolgear.com/product/8-port-usb-to-octal-rs-232422485-adapter

© 2017 Coolgear, Inc. All Rights Reserved. All products and accompanying digital documentation including images are the property and / or trademarks of Coolgear Inc. Coolgear Inc. are continuously improving upon its products. Product specifications are subject to change without notice.