

- Optional external metal Serial I/O Box with eight DB-25 male connectors and link cable of 1.5 meter available. DIN-rail and panel mountable (COMBOX-8-DB25)

Specification

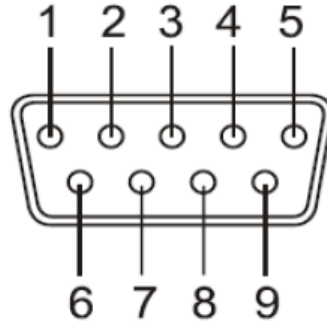
General	
Bus	PCI Express; Single-Lane (x1)
Chipset	One EXAR XR17V358
Interface	RS-232
Plug & Play	Supported
IRQ &IO Address	Assigned by system BIOS

Serial Port	
Serial Ports Number	8-Port
Connectors & Cable	One DB-62 female connector on card One DB-62 male to eight DB-9 male adapter cable included
RS-232 Signals	DCD, RxD, TxD, DTR, GND, DSR, RTS, CTS
Max. Baud Rate	921600 bps
Serial Configuration	Data bits : 5,6,7,8 Parity : None, Odd, Even, Mark , Space Stop bits : 1, 1.5 , 2
UART FIFO Buffer size	Each port with 256 bytes FIFO for transmit and receive

Environment	
Operating Temperature	0°C to 60°C
Storage Temperature	-40°C to 85°C
Humidity	0 to 80% RH. Noncondensing
Safety Approvals	CE, FCC



The following are the pin-out of DB-9 connector for PCIe-800 PCI Express serial I/O card.



DB9 Male connector pin numbers

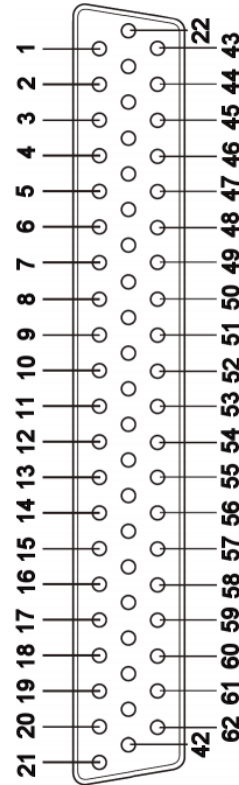
RS-232 Pin-out for DB-9 connector

Pin Number	Pin Type	Description
1	Input	DCD : Data Carrier Detect
2	Input	RxD : Receive Data
3	Output	TxD : Transmit Data
4	Output	DTR : Data Terminal Ready
5	Ground	GND : Signal Ground
6	Input	DSR : Data Set Ready
7	Output	RTS : Request To Send
8	Input	CTS : Clear To Send



Pin-out of one DB-62 female connector for eight RS-232 ports of PCIe-800

Pin	RS 232	Pin	RS 232	Pin	RS 232
1	TxD (1)	22	RxD (1)	43	CTS (1)
2	DTR (1)	23	DSR (1)	44	RTS (1)
3	RxD (2)	24	DCD (1)	45	GND
4	DSR (2)	25	TxD (2)	46	CTS (2)
5	DCD (2)	26	DTR (2)	47	RTS (2)
6	TxD (3)	27	RxD (3)	48	CTS (3)
7	DTR (3)	28	DSR (3)	49	RTS (3)
8	RxD (4)	29	DCD (3)	50	GND
9	DSR (4)	30	TxD (4)	51	CTS (4)
10	DCD (4)	31	DTR (4)	52	RTS (4)
11	RxD (5)	32	GND	53	CTS (5)
12	DSR (5)	33	TxD (5)	54	RTS (5)
13	DCD (5)	34	DTR (5)	55	GND
14	TxD (6)	35	RxD (6)	56	CTS (6)
15	DTR (6)	36	DSR (6)	57	RTS (6)
16	RxD (7)	37	DCD (6)	58	GND
17	DSR (7)	38	TxD (7)	59	CTS (7)
18	DCD (7)	39	DTR (7)	60	RTS (7)
19	RxD (8)	40	GND	61	CTS (8)
20	DSR (8)	41	TxD (8)	62	RTS (8)
21	DCD (8)	42	DTR (8)		



DB62 Female connector pin-out

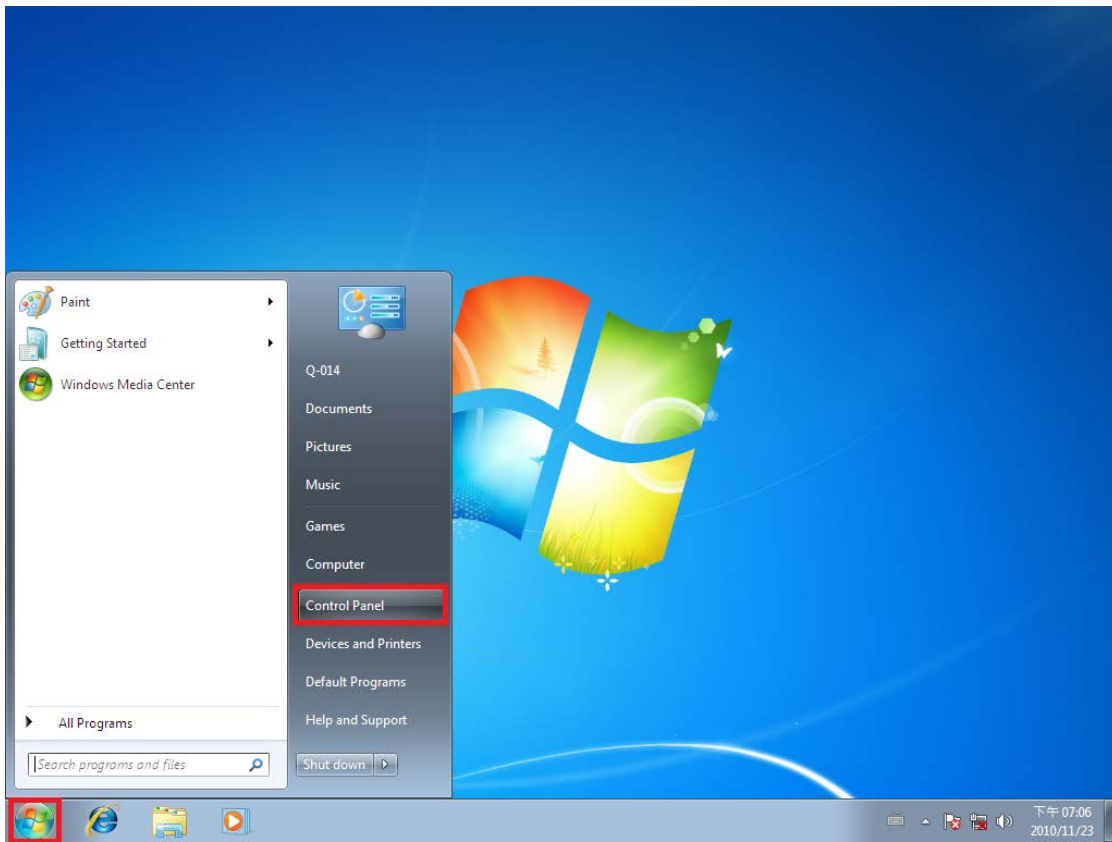
Installation

Windows 7 / 8 / 8.1 (32-bit / 64-bit) Driver Installation

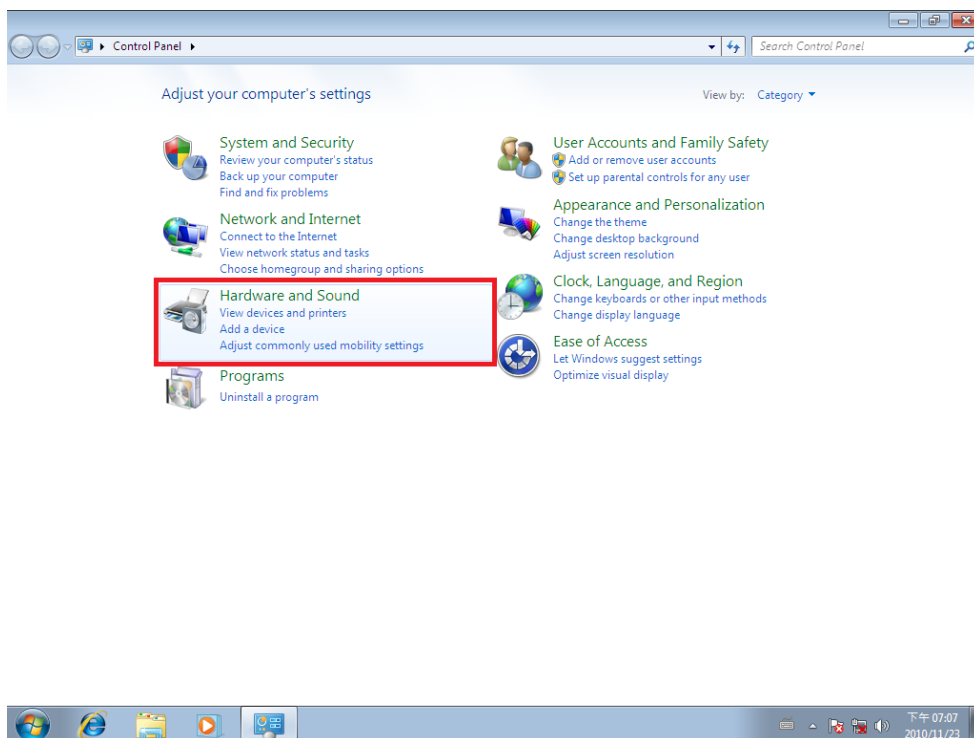
To install the Windows driver from Device Manager for PCI Express 8-port serial I/O card, please follow the steps below:

1. Switch off the computer.
2. Insert the PCI Express serial I/O card into a free PCI Express Bus slot.
3. Switch on the computer and start Windows O.S.
4. Windows O.S will automatically detect the PCI Express I/O Card.
5. Press "START" button and select "Control Panel".

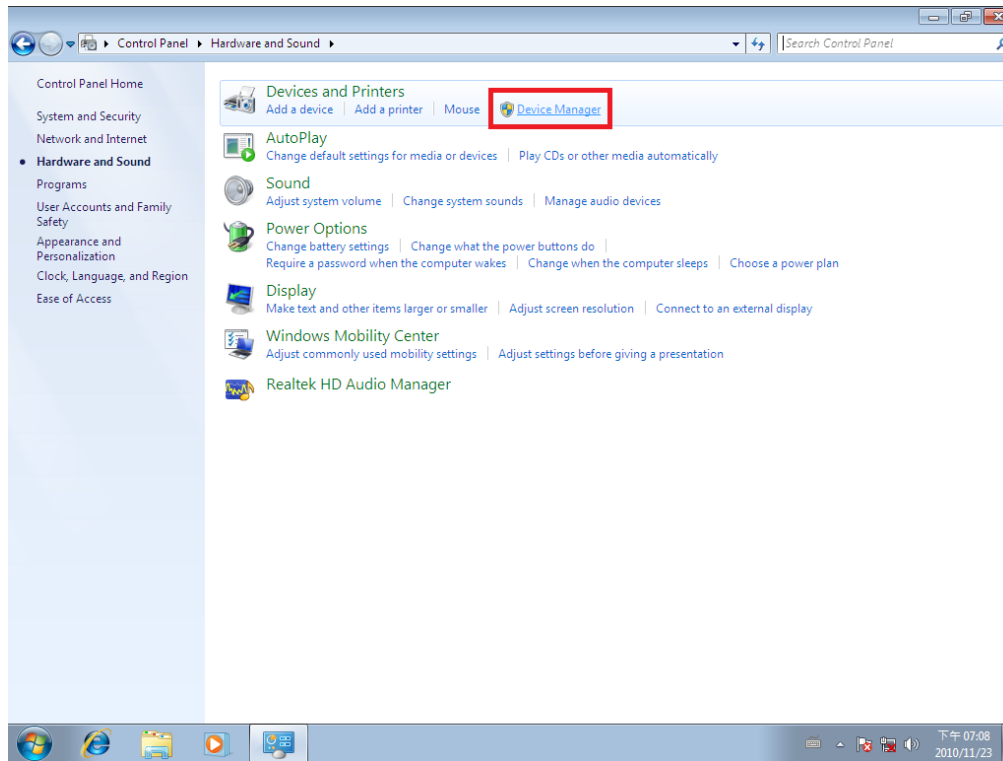




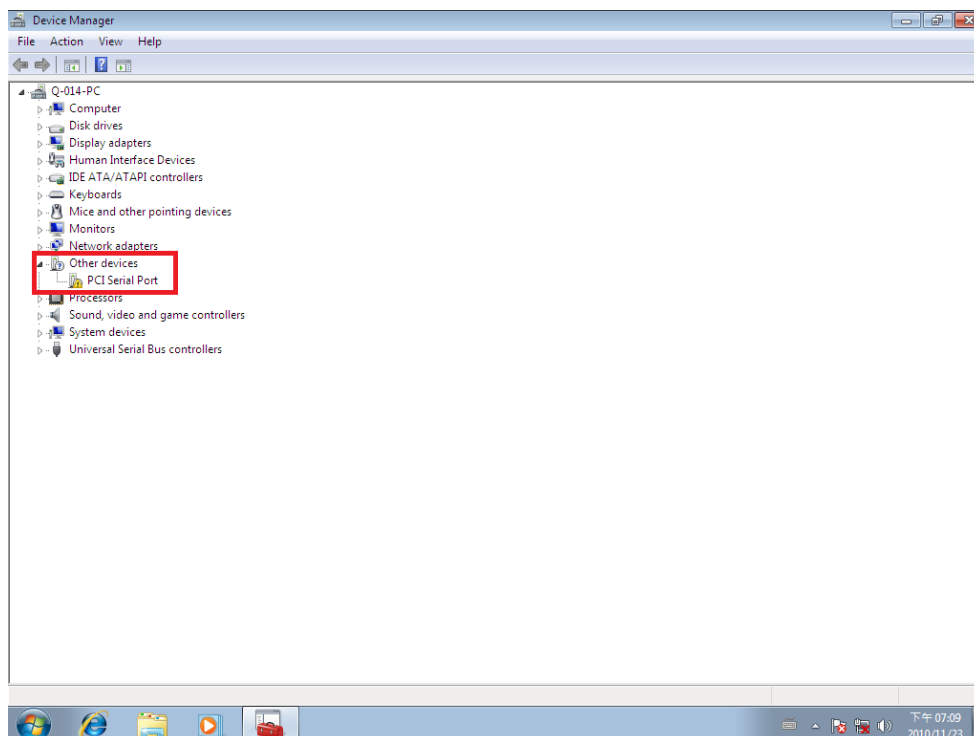
6. Select "Hardware and Sound".



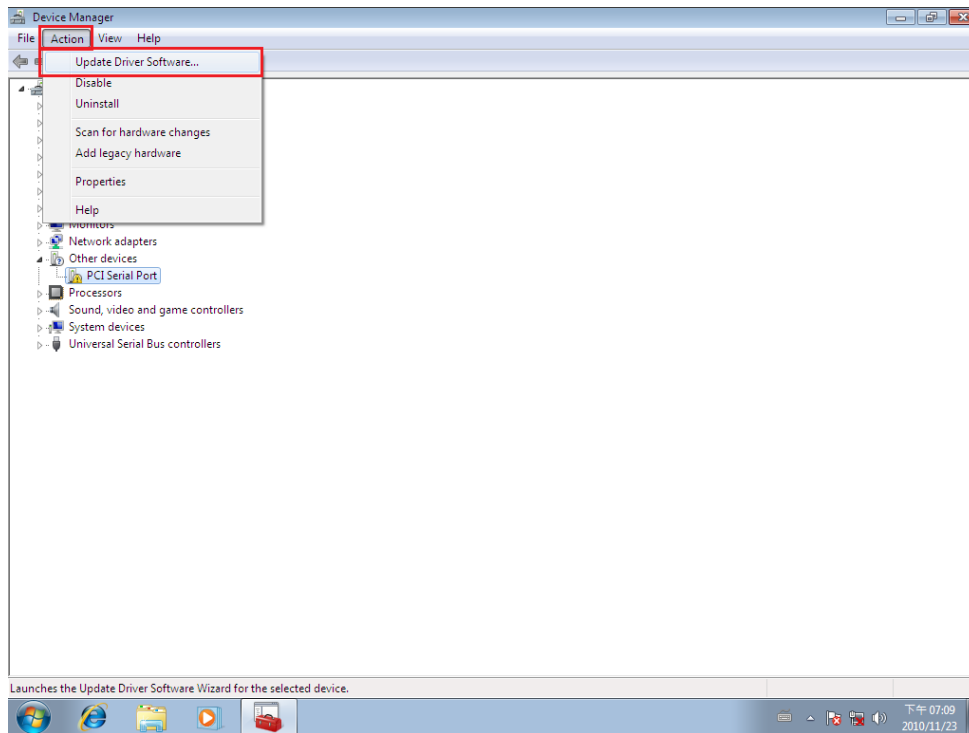
7. Select “Device Manager”.



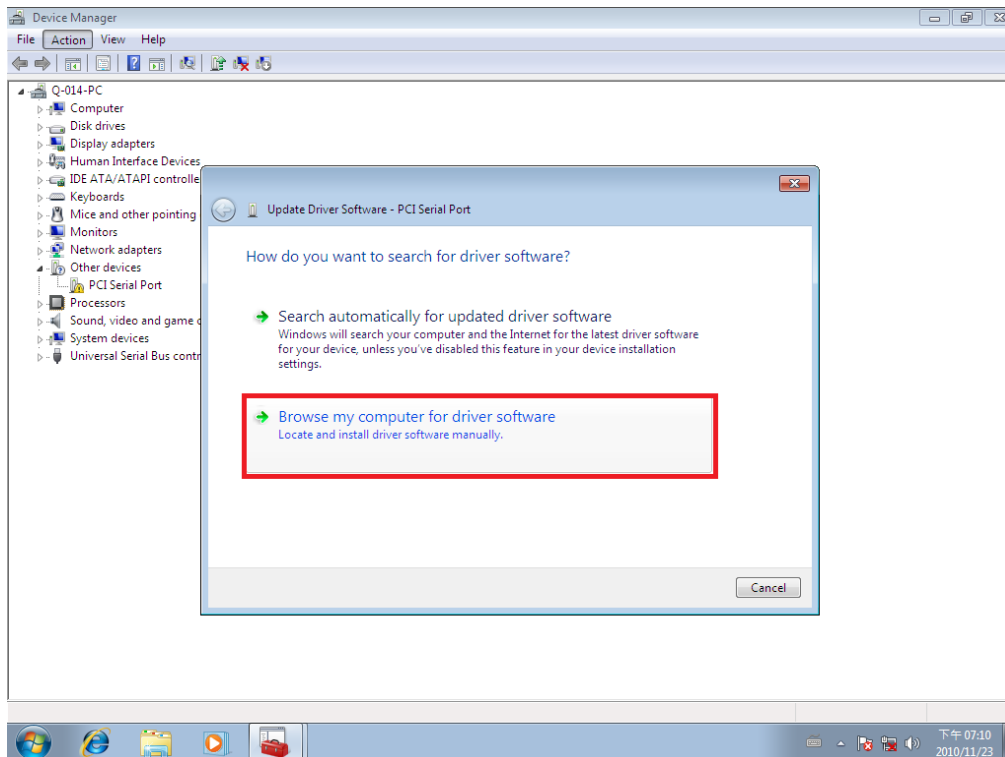
8. Under “Device Manager” of the System properties, you can find “PCI Serial Port” attached to “Other devices”. Select “PCI Serial Port”.



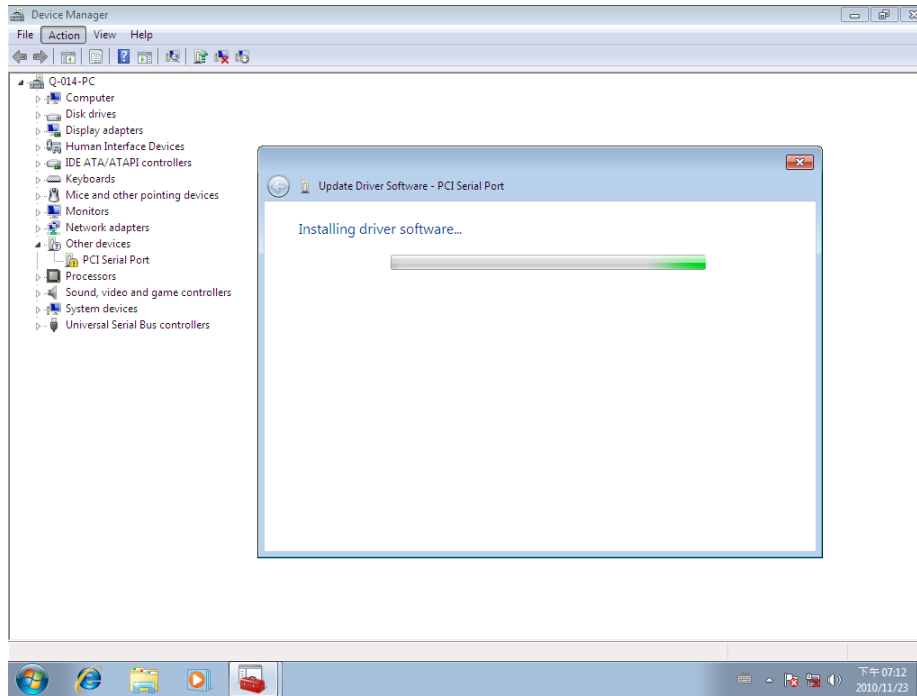
9. Select “Action” and execute “Update Driver Software”.



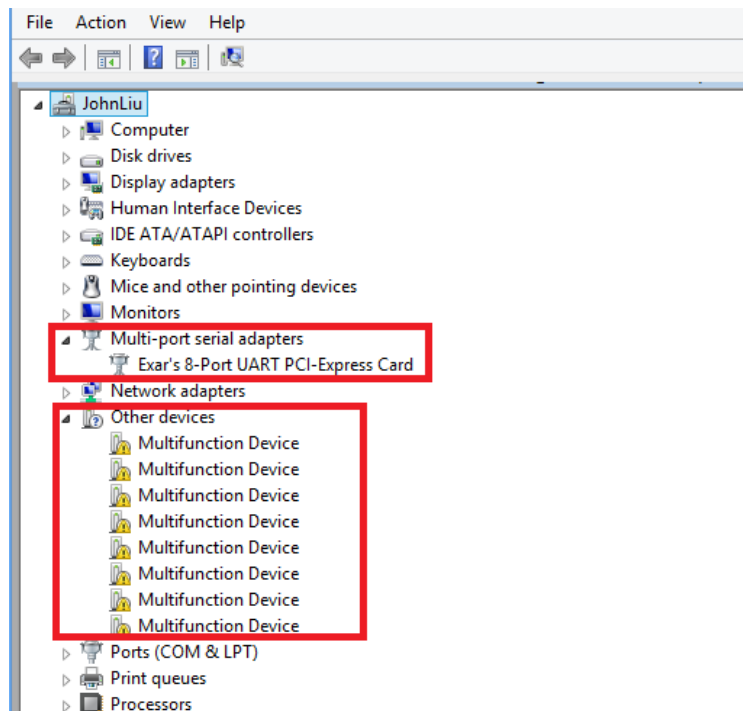
10. Click “Browse my computer for driver software”.



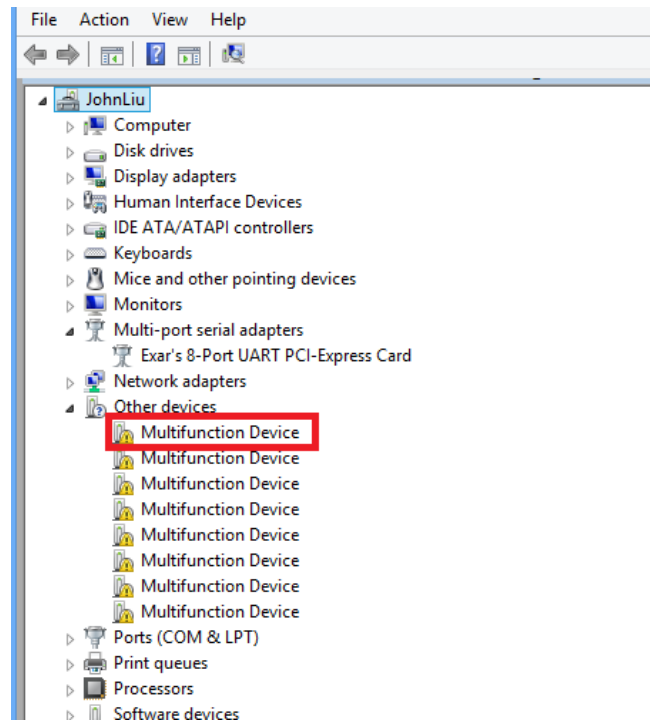
11. Insert the driver CD into the CD-ROM or DVD-Rom drive.
12. For 32-bit Windows OS, select the directory “\PCI Driver\x86” as the target. For 64-bit Windows OS, select the directory “\PCI Drivers\x64” as the target. Click on “OK”, and on “Next” to install driver.



13. After driver installation is completed successfully, you will find in “Device Manager” one “Exar’s 8-Port UART PCI-Express Card” listed under “Multi-port serial adapters” and eight “Multifunction Device” listed under “Other devices”.



14. Select the first “Multifunction Device”.

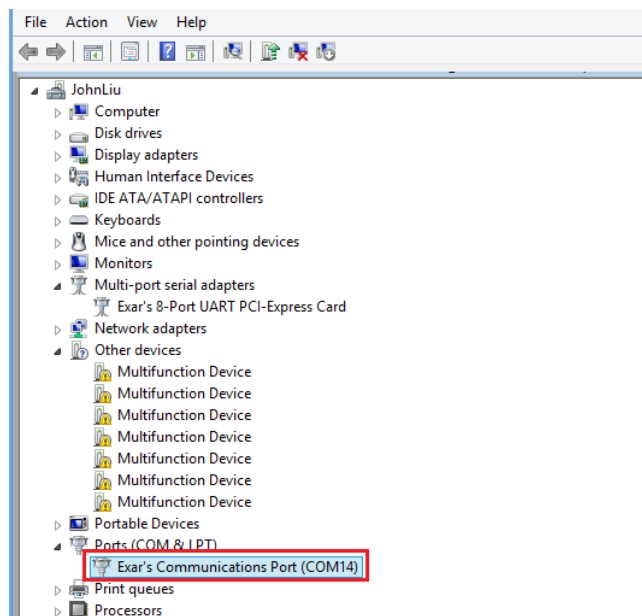


15. Select “Action” and execute “Update Driver Software”.

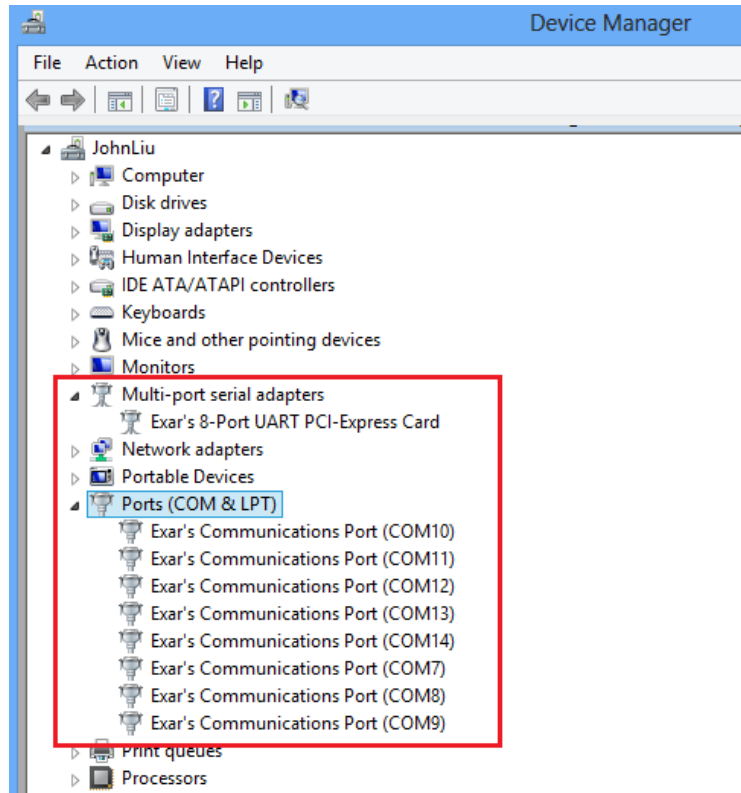
16. Click “Browse my computer for driver software” again.

17. For 32-bit Windows O.S., select the directory “\PCIe Drivers\x86” as the target. For 64-bit Windows O.S., select the directory “\PCIe Drivers\x64” as the target. Click on “OK”, and on “Next” to install COM port driver.

18. After COM port driver installation is done successfully, you will find the first “Exar’s Communications Port (COMx)” listed under “Ports (COM & LPT)” in “Device Manager”.



19. Select the next “Multifunction Device” by order, and repeat step 15~17 to install COM port driver for all “Multifunction Device”.
20. After all COM port driver installation is done successfully, you will find eight “Exar’s Communications Port (COMx)” listed under “Ports (COM & LPT)” in “Device Manager”.

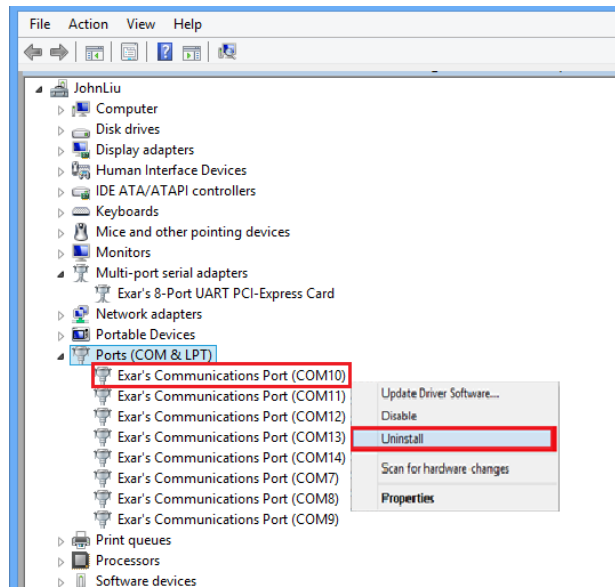


Uninstalling Windows Drivers

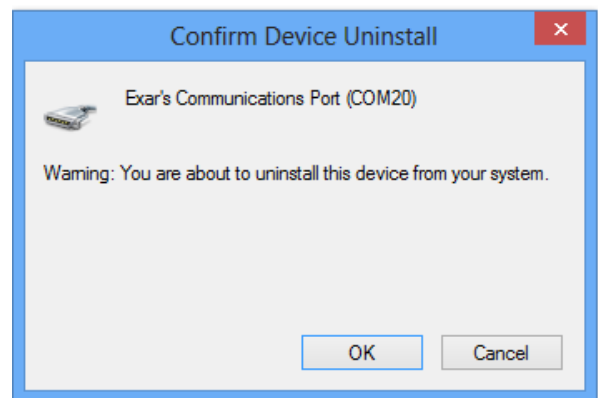
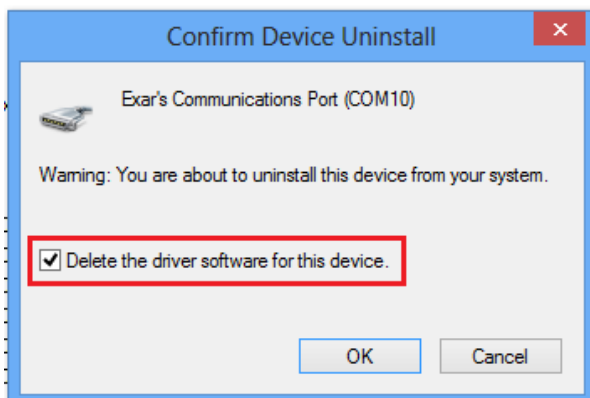
To uninstall the Windows driver from Device Manager for PCIe-800 PCI Express serial I/O card, please follow the steps below:

1. Right click on “Exar’s Communications Port (COMx)” in “Device Manager “to expand to “Device Control ” screen. Select “Uninstall” to start Exar’s Communications Port (COMx) driver uninstall.



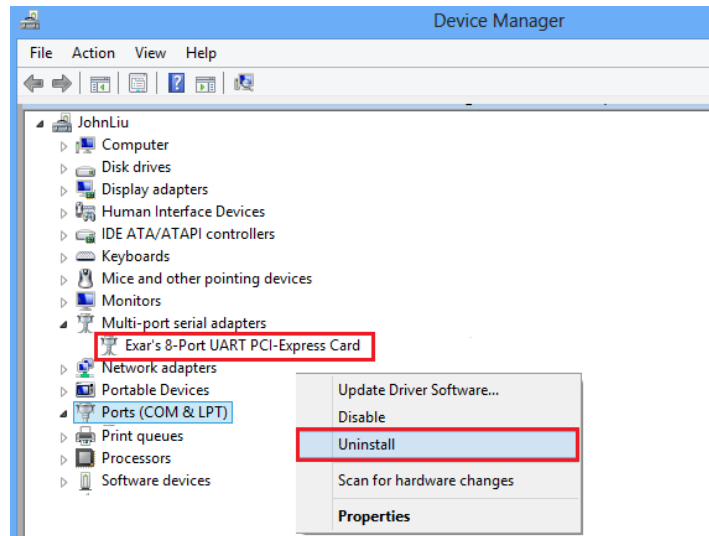


2. Under “Confirm Device Uninstall” screen, check “Delete the driver software for this device”. Click “OK” to uninstall the software driver. If you don’t find “Delete the driver software for this device” message, then just click “OK” to uninstall the software driver.

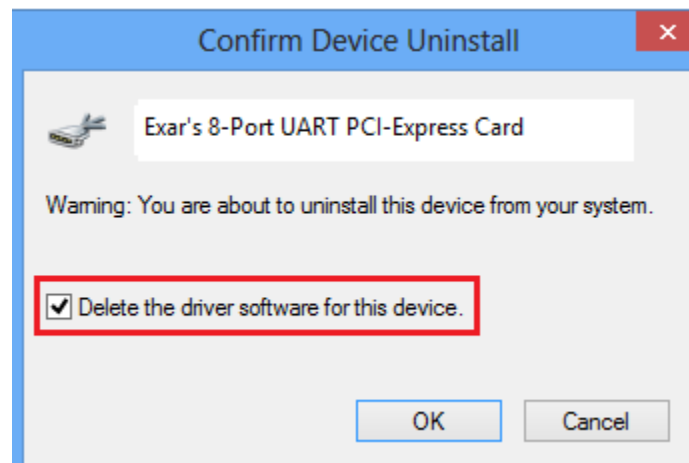


3. Right click on other “Exar’s Communications Port (COMx)” and repeat step 1 ~2 to uninstall all Exar’s Communications Port driver.
4. Right click on “Exar’s 8-Port UART PCI-Express Card ” under “Device Manager” to expand to “Device Control ” screen. Select “Uninstall” to start “Exar’s 8-Port UART PCI-Express Card” software driver uninstall.





5. Under “Confirm Device Uninstall” screen, check “Delete the driver software for this device”. Click “OK” to uninstall the software driver. If you don’t find “Delete the driver software for this device” message, then just click “OK” to uninstall the software driver.



6. If you install more than one PCI Express 8-port serial I/O cards in the system, right click on other “Exar’s 8-Port UART PCI-Express Card”. Repeat step 4 to 5 to uninstall all PCI Express 8-port serial I/O cards software driver.

