

AnyplaceUSB-S4 USB SERVER USER'S MANUAL

2019 Edition



Coolgear Inc
www.coolgear.com

Contents

INTRODUCTION	4
FEATURES	5
SPECIFICATIONS	6
INSTALLATION	7
Step 1 - Connect the AnyplaceUSB-S4 USB server device to your network.....	7
Step 2 - Connect the USB server device's power supply/Read the LEDs.....	7
Step 3 - Connect the USB devices to AnyplaceUSB-S4	7
WEB CONSOLE CONFIGURATION INTERFACE.....	8
Open the Web Console Configuration Interface for USB Server Device	8
Server Status	10
Device.....	11
Devices Settings	12
USB device does not connect	13
USB device waiting for connect	13
USB device shared for client computer	14
USB devices settings	14
Disconnect shared USB device manual option	15
Network	16
Network Setting	17
Change USB server device's name.....	17
Default IP Address Type (DHCP)	17
Setting Static IP Address	18
Update Firmware	19
Reset Device.....	20
Password Change	21
RUNNING ANYPLACEUSB SOFTWARE PROGRAM.....	22
Running AnyplaceUSB Software Program in Client Computer	26
Running AnyplaceUSB Software Program in CLIENT Mode.....	27
Connect Remote Shared USB Devices to your Computer	31
Disconnect Remote Shared USB Devices from your Computer	33
Other Buttons in CLIENT Mode.....	34
"Add Server" Button	34
"Add Device" Button.....	36
"Remove" Button.....	38

“Status” Button	38
“Refresh” control button	38
“Minimize” control button.....	39
AnyplaceUSB SOFTWARE UNINSTALLATION	40
Uninstalling AnyplaceUSB Software Program.....	40
Additional Information	42
USB Server Device Status LEDs	42
Hardware Restore Factory Default Button	43
Hardware Reset Button	43

INTRODUCTION

The AnyplaceUSB-S4 is a network-enabled USB server device for connecting four USB devices over the 10/100 Mbps Ethernet network running TCP/IP. By adding this USB to Ethernet server device to LAN, you can network-enable USB devices. It breaks the traditional five-meter USB cabling distance limitation. With this implementation, USB devices connected to AnyplaceUSB-S4 USB server device can be made available to remote clients over LAN without a locally attached host PC.

AnyplaceUSB-S4 4-port USB server device providing the capability of USB devices network sharing across any network including Ethernet, WAN, VLAN, VPN and the Internet. The USB devices connected can be accessed and shared over Ethernet by multiple remote client computers. This AnyplaceUSB-S4 USB server device makes it possible to share the USB devices, and it makes them available to the remote computers connected from anywhere in the world. By adding the AnyplaceUSB-S4 USB server device connected to LAN, WAN, or the Internet, you can then share the USB devices plugged to the device. The authorized users are allowed to remotely connect and use the shared USB devices from anywhere, regardless of their distances and locations. Unlike many other USB over IP Servers, with their limitation for usage only on the same network but not functioning over different networks, the AnyplaceUSB-S4 USB server device provides the flexibility and ease to allow USB ports sharing across different networks and over the Internet easily. You and other users can connect, access and share the USB devices conveniently, no matter if you are in an office next door, or in another cities, or even in different countries.

With simple and user-friendly interface, the AnyplaceUSB program is very easy to install and use. There are no complicated settings to be configured, and nor do you need to change any of your existing network configuration. Only few simple steps will take you instantly to make the USB devices ready to share over any network. Likewise, it is very easy for the client computers to find and connect to all the available remote shared USB devices. To secure the connection between shared USB devices and remote client computers, password authorization is implemented for controlled access. Only authorized clients are permitted to access specified USB devices remotely. In addition, traffic encryption provides further protection on data security and keeps all the information safe to secure connection. Data compression feature is also available to accelerate data transfer speed.

This AnyplaceUSB-S4 USB server device is a professional solution to redirect USB devices to remote computers on the network. It provides a convenient and efficient way for USB devices remote connectivity. The AnyplaceUSB software provided works with Windows 10, 8.1, 8, 7, Vista, XP, ME, 2000, Windows Server 2016 and Linux.

FEATURES

- Extends USB cabling distance beyond five meters
- Supports wide variety of USB devices
- Compatible with bulk, interrupt and isochronous type USB devices
- Provide plug and play function akin to an on-board USB port
- Empowers USB ports with USB device networking and sharing functionality
- Allows USB devices to be accessed and shared by multiple client computers over network or across the internet
- Network-enables remote USB peripherals and devices as if they were connected directly to the local PC
- Supports wide variety of USB devices, i.e. printers, fingerprint readers, scanners, barcode scanners, ID card scanners, security dongles, USB dongles, hard drives and flash drives, USB to RS-232/422/485 adapters, iPhones, iPads, Android devices and many more
- USB plug-and-play and hot-swap functions same as onboard USB ports
- User-friendly and convenient AnyplaceUSB software program with client functionality
- Shares your USB devices over a network automatically
- Password authorization and traffic encryption for data security and safety
- Any authorized users in an office next door or in another country may remotely access your USB devices through AnyplaceUSB app client
- Able to share USB security software protection dongles conveniently using features of AnyplaceUSB software program
- Multiple transaction translator (TT) architecture to each USB downstream (DS) port
- LEDs for power, Ethernet and USB status indication
- Includes a DC 12V 1A switching power adapter
- Power supply with latch locking to the device preventing from accidental disconnection

SPECIFICATIONS

The tables below show the hardware specifications of the AnyplaceUSB-S4:

Function		Specification
Ports	USB Downstream	Four (USB2.0)
	Ethernet	One (10/100Mbps)
LEDs	Power	One (Power on)
	Ethernet Port Status	Two (Link and Speed)
	USB Port Status	Four (USB2.0 Port Status)
Power Mode		Self-power mode
Output Voltage (per port)		+5VDC
Output Current (per port)		500mA maximum
Operating Temperature		0°C to 45°C
Storage Temperature		-20°C to 70°C
Humidity		0 to 90% RH. Noncondensing
Safety Approvals		CE, FCC
Housing		Plastic case
Weight		110g
Dimensions		106mm × 97mm × 32mm (L × W × H)
Input Power Range		9Vdc ~ 48Vdc
Power Consumption		1000mA@12VDC(Fully Load) 200mA@12VDC(no Load)
Utility		AnyplaceUSB software

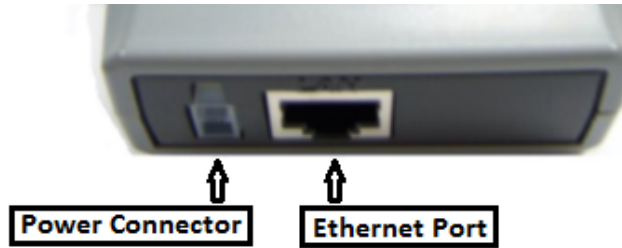
Note: The USB devices sharing function is available on computers with Windows OS and Linux.

INSTALLATION

Note: The default configuration for the AnyplaceUSB-S4 USB server device is **DHCP** enabled. If the USB server device is not able to get an IP address from a DHCP server, it will use the **IP address 192.168.254.254** and the **subnet mask 255.255.255.0**.

Step 1 - Connect the AnyplaceUSB-S4 USB server device to your network

First connect an Ethernet cable to the AnyplaceUSB-S4 USB server device's Ethernet port.



Once the Ethernet cable is connected, connect the other end of the cable to your network. This can be a free Ethernet port on your DSL router, Ethernet Hub/Switch, or an 802.11n router/base station.

If you do not have a network, you can connect the USB server device directly to the Ethernet port on your computer using static IP address.

Step 2 - Connect the USB server device's power supply/Read the LEDs

Connect the included power supply to the USB server device's power connector.

Once the USB server device is powered, the USB server device's green "SPEED" Ethernet's status LED and yellow "LINK" Ethernet's status LED will turn ON. After a few seconds, the red "PWR" LED will illuminate when the USB server device is working fine and booted properly.

Step 3 - Connect the USB devices to AnyplaceUSB-S4

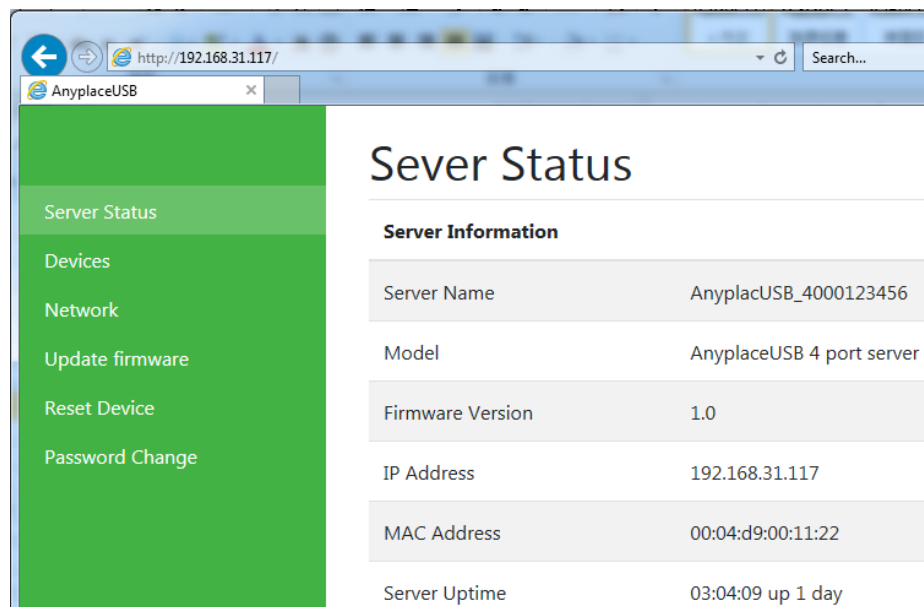
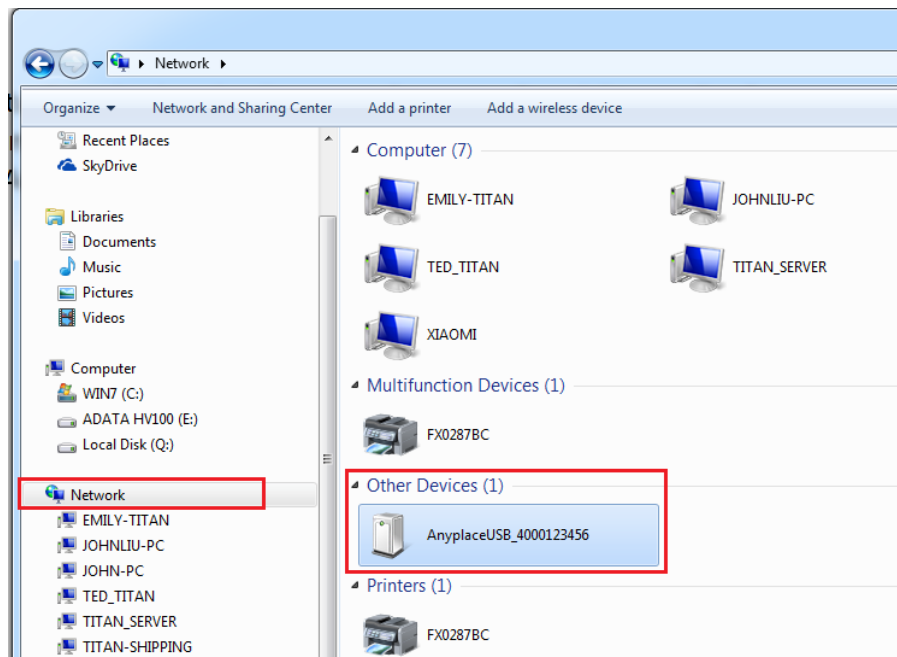
Connect your USB devices to USB ports on AnyplaceUSB-S4. The green USB status LED will illuminate when your USB devices have connected to the USB ports successfully.

The AnyplaceUSB-S4 USB server device hardware installation is now complete. User can into the web console interface to configure the USB server device, please open any web browser and enter AnyplaceUSB-S4's IP address in the address bar to access the "HOME" page of AnyplaceUSB-S4's firmware.

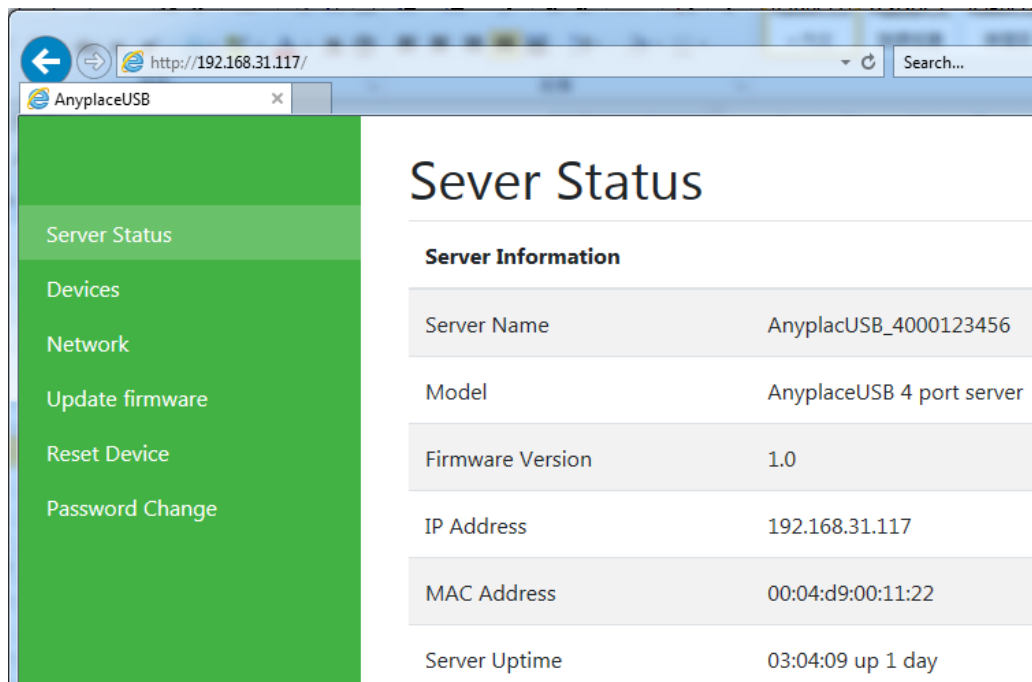
WEB CONSOLE CONFIGURATION INTERFACE

Open the Web Console Configuration Interface for USB Server Device

To open the web console configuration Interface of the USB server device, you go into “Network” in Windows OS. You can find the USB server device (AnyplaceUSB_4000123456) under “Other Devices”; please click this USB server device (“AnyplaceUSB_4000123456”) to display the web console configuration Interface.



The web console interface allows configuration of AnyplaceUSB-S4. These settings include “Server Status”, “Device”, “Network”, “Update Firmware”, “Reset Devices” and “Password Change”.



The screenshot shows a web browser window with the address bar displaying `http://192.168.31.117/`. The browser tab is labeled "AnyplaceUSB". On the left side, there is a green sidebar menu with the following options: "Server Status" (highlighted), "Devices", "Network", "Update firmware", "Reset Device", and "Password Change". The main content area is titled "Sever Status" (note the typo). Below the title, there is a section labeled "Server Information" containing a table with the following data:

Server Name	AnyplacUSB_4000123456
Model	AnyplaceUSB 4 port server
Firmware Version	1.0
IP Address	192.168.31.117
MAC Address	00:04:d9:00:11:22
Server Uptime	03:04:09 up 1 day

Server Status

Click “Server Status” to display the “Server Information” and “Device” information; the “Server Information” include “Server Name”, “Model”, “Firmware Version”, “IP Address”, “MAC Address” and “Server Uptime” information.

Sever Status

Server Information

Server Name	AnyplacUSB_4000123456
Model	AnyplaceUSB 4 port server
Firmware Version	1.0
IP Address	192.168.31.117
MAC Address	00:04:d9:00:11:22
Server Uptime	03:33:21 up 1 day

The “Device” information displays current USB port status and connected USB devices information(Device 1 Information ~ Device 4 Information), it include “Device Name” and “Status”, the “Device Name” displays current connected USB device and the “Status” displays this USB device is waiting for share or shared by client computer.

Device

Device 1 Information

Device Name	No Device
Status	-

Device 2 Information

Device Name	No Device
Status	-

Device 3 Information

Device Name	No Device
Status	-

Device 4 Information

Device Name	Hard Drive
Status	Waiting...

Device

Device 1 Information

Device Name	No Device
Status	-

Device 2 Information

Device Name	No Device
Status	-

Device 3 Information

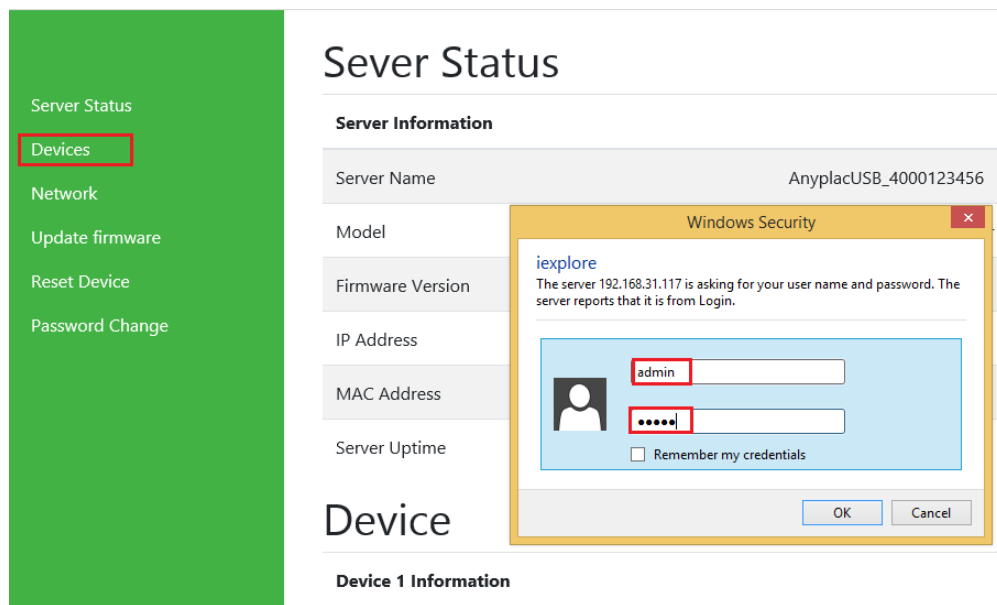
Device Name	No Device
Status	-

Device 4 Information

Device Name	Hard Drive
Status	Connect to 192.168.31.86

Device

Click “Device” to setting USB devices for your AnyplaceUSB-S4 USB server device, after you click “Device” , you will find “Windows Security” message, the user needs to key-in user name and password then click “OK” to into “Devices Settings” control panel, it displays current USB port status and connected USB devices information, user also can setting the USB devices. The default user name and password of USB server device are “**admin**” (the default user name and password are same).



Devices Settings

The “Devices Settings” for AnyplaceUSB-S4 USB server device includes the USB port status, connected USB devices control panel and information(Device 1 Information ~ Device 4 Information).

Devices Settings

Device 1 Information

Device Additional Information	Vendor ID : 0x125f Product ID : 0xa42a Product : HV100 Manufacturer : ADATA Serial : 47A03396219D
Network option	<input type="checkbox"/> Compression <input type="checkbox"/> Encryption
<input type="checkbox"/> Enable authorization	Password: <input type="text"/>
Description	<input type="text"/>
Connect to 192.168.31.135	<input type="button" value="Disconnect"/> <input type="button" value="Update"/>

Device 2 Information

Device Additional Information	Vendor ID : 0x120d Product ID : 0x0566 Product : Fujitsu HDD Manufacturer : Fujitsu HDD Serial : 2017052600D0D
Network option	<input type="checkbox"/> Compression <input type="checkbox"/> Encryption
<input type="checkbox"/> Enable authorization	Password: <input type="text"/>
Description	<input type="text"/>
Connect to 192.168.31.135	<input type="button" value="Disconnect"/> <input type="button" value="Update"/>

Device 3 Information

Device Additional Information	Vendor ID : 0x0bc2 Product ID : 0xab26 Product : BUP Slim SL Manufacturer : Seagate Serial : NA9LHT4E
Network option	<input type="checkbox"/> Compression <input type="checkbox"/> Encryption
<input type="checkbox"/> Enable authorization	Password: <input type="text"/>
Description	<input type="text"/>
Connect to 192.168.31.135	<input type="button" value="Disconnect"/> <input type="button" value="Update"/>

Device 4 Information

Device Additional Information	Vendor ID : 0x054c Product ID : 0x0b7d Product : Hard Drive Manufacturer : Sony Serial : 46C28616202F
Network option	<input type="checkbox"/> Compression <input type="checkbox"/> Encryption
<input type="checkbox"/> Enable authorization	Password: <input type="text"/>
Description	<input type="text"/>
Connect to 192.168.31.135	<input type="button" value="Disconnect"/> <input type="button" value="Update"/>

Under “Device Settings” main windows, you can find four “Device x Information” (Device 1 Information ~ Device 4 Information), Each “Device x Information” show the USB port status, it includes USB device not connect , USB device waiting for connect, USB device shared for client computer .

USB device does not connect

When the USB device is not connected to AnyplaceUSB-S4 USB server device, the “Device x Information” show “Device is not connected” message.

USB device waiting for connect

When the USB device connect to AnyplaceUSB-S4, the USB device will waiting for connect over a network automatically; the “Device x Information” will show following message :

Devices Settings

Device 1 Information	
Device Additional Information	Vendor ID : 0x0781 Product ID : 0x5583 Product : Ultra Fit Manufacturer : SanDisk Serial : 4C531001550107104314
Network option	<input type="checkbox"/> Compression <input type="checkbox"/> Encryption
<input type="checkbox"/> Enable authorization	Password: <input type="text"/>
Description	<input type="text"/>
<input type="text"/>	<input type="button" value="Update"/>

When the USB device connect to AnyplaceUSB-S4 successfully, the “Device x Information” will show “Device Additional Information”, “Network option” for network traffic compression and encryption option box, “Enable authorization” option, “Password” setting option, “Description” setting option and “Update” control button.

USB device shared for client computer

After the USB device connect to AnyplaceUSB-S4 and the remote client computer connect to this USB device over network successfully; the “Device x Information” will show following message:

Device 1 Information

Device Additional Information	Vendor ID : 0x125f Product ID : 0xa42a Product : HV100 Manufacturer : ADATA Serial : 47A03396219D
Network option	<input type="checkbox"/> Compression <input type="checkbox"/> Encryption
<input type="checkbox"/> Enable authorization	Password: <input type="text"/>
Description	<input type="text"/>
Connect to 192.168.31.135 <input type="button" value="Disconnect"/>	<input type="button" value="Update"/>

When the shared USB device of AnyplaceUSB-S4 connect to remote client computer successfully, the “Device x Information” will show “Connect to xxx.xxx.xxx.xxx” and a “Disconnect” control button on the bottom left under “Device x Information” message , the “xxx.xxx.xxx.xxx” is IP address of remote client computer.

USB devices settings

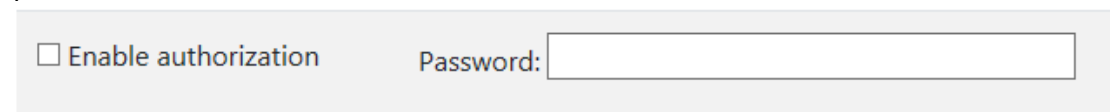
Form “Device x Information”, you can set some options for USB devices manually, under “Network option”, you can enable traffic encryption by ticking the encryption box. It is recommended for security reasons. All data sent will be encrypted, although it may slightly slow down the communication speed.

Network option	<input type="checkbox"/> Compression <input type="checkbox"/> Encryption
----------------	--

The traffic compression option helps speed up interaction with certain types of USB devices and reduces Internet traffic. You can enable traffic compression option by ticking the compression box. You may find this useful for USB devices which transfer data in uncompressed formats, like scanners. It is recommended to not use this option for USB devices which transfer incompressible types of data, such as isochronous USB devices (e.g. audio cards, web cams, etc.).

For example, web cam video compression is enabled by default, and further compression may degrade video quality.

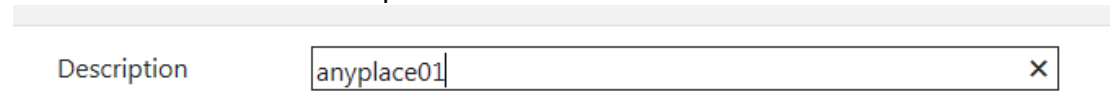
Under “Enable authorization” option, by enabling password authorization, you can use a password to secure connection. The client computer should paste the same password in order to establish connection.



A screenshot of a software interface showing a checkbox labeled "Enable authorization" and a text input field labeled "Password:". The checkbox is currently unchecked.

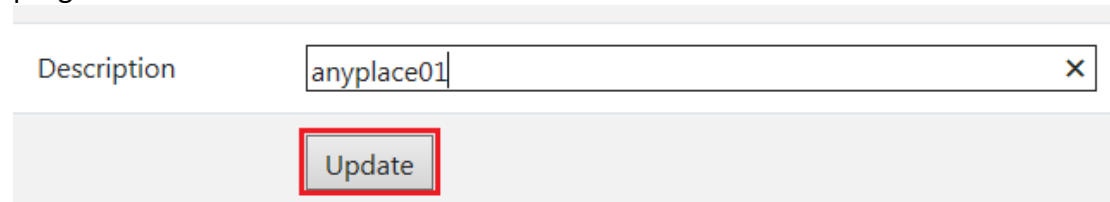
Tick the “Enable authorization” box and enter your desired “Password” for the password setting. After password setting, the shared USB device will have password protection.

Under “Description” option, you can enter a text to add a description for your shared USB device. After add a description for your shared USB device, the client computer will be able to see the description next to the USB device.



A screenshot of a software interface showing a text input field labeled "Description" with the text "anyplace01" entered. There is a small 'x' icon in the top right corner of the input field.

After finishing all option settings for your shared USB device and clicking “Update”, control button , you will see the “Update Device Settings...” message. Click “Ok” to finish the USB device sharing setup. After clicking “Ok”, the AnyplaceUSB software program will be restarted.



A screenshot of a software interface showing a text input field labeled "Description" with the text "anyplace01" entered. Below the input field is a button labeled "Update". The button is highlighted with a red rectangular border.

Disconnect shared USB device manual option

The shared USB devices on AnyplaceUSB-S4 connect to remote client computer successfully, the “ Device x Information ” show “Connect to xxx.xxx.xxx.xxx” and a “Disconnect” control button on the bottom left of “Device x Information” message; Click “Disconnect” control button to disconnect shared USB devices for your AnyplaceUSB-S4 USB server device manually, after you click “Disconnect” , you will find “Update Device Settings...” message and the shared USB device will be disconnect from remote client computer.

Network

Under the web console interface, select “Network” to setting network for your AnyplaceUSB-S4 USB server device, after you click “Network” , if you find “Windows Security” message, you needs to key-in user name and password then click “OK” to into “Network Setting” control panel, you can see the important information about network of AnyplaceUSB-S4 USB server device, user also can setting network for the USB server device.

The default user name and password of USB server device are “**admin**” (the default user name and password are same).

[Server Status](#)
[Devices](#)
[Network](#)
[Update firmware](#)
[Reset Device](#)
[Password Change](#)

Sever Status

Server Information

Server Name	AnyplacUSB_4000000001
Model	
Firmware Version	
IP Address	
MAC Address	
Server Uptime	

Device

Windows Security

The server 192.168.31.215 is asking for your user name and password. The server reports that it is from Login.

admin

•••••

☐ Remember my credentials

OK

Cancel

Network

Network Information

IP Address	192.168.31.215
Subnet Mask	255.255.255.0
MAC Address	00:04:d9:80:56:78

Network Setting

Server Name	AnyplacUSB_4000000001
DHCP Setting	<div>DHCP</div>
IP Address	<div>192168254254</div>
Subnet Mask	<div>2552552550</div>
Gateway	<div>1921682541</div>

Submit

Network Setting

Under “Network Setting” control panel, you can see “Server Name”, “DHCP Setting”, “IP Address”, “Subnet Mask” and “Gateway” to setting network for your AnyplaceUSB-S4 USB server device.

Change USB server device’s name

You can change USB server device’s name by modifying the “Server Name”. you need to enter a new name (such as AnyplaceUSB-server) and click “Submit” to set your USB server device to a new name.

Network Setting

Server Name	<input type="text" value="AnyplacUSB-server"/>
DHCP Setting	<input type="button" value="DHCP"/> ▾
IP Address	<input type="text" value="192"/> . <input type="text" value="168"/> . <input type="text" value="254"/> . <input type="text" value="254"/>
Subnet Mask	<input type="text" value="255"/> . <input type="text" value="255"/> . <input type="text" value="255"/> . <input type="text" value="0"/>
Gateway	<input type="text" value="192"/> . <input type="text" value="168"/> . <input type="text" value="254"/> . <input type="text" value="1"/>

Default IP Address Type (DHCP)

The default configuration for the AnyplaceUSB-S4 USB server device is **DHCP** enabled. Many networks are working in DHCP networks, which assign IP address for AnyplaceUSB-S4 USB server device automatically.

Network Setting

Server Name	<input type="text" value="AnyplacUSB_4000000001"/>
DHCP Setting	<input type="button" value="DHCP"/> ▾
IP Address	<input type="text" value="192"/> . <input type="text" value="168"/> . <input type="text" value="254"/> . <input type="text" value="254"/>
Subnet Mask	<input type="text" value="255"/> . <input type="text" value="255"/> . <input type="text" value="255"/> . <input type="text" value="0"/>
Gateway	<input type="text" value="192"/> . <input type="text" value="168"/> . <input type="text" value="254"/> . <input type="text" value="1"/>

Setting Static IP Address

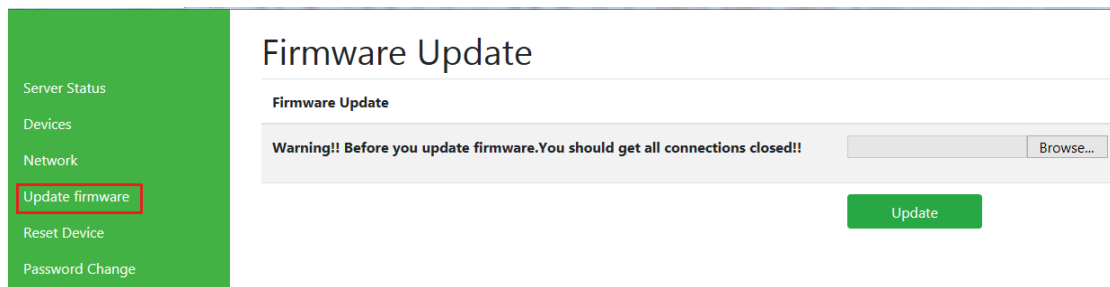
Click “DHCP Setting” to select IP address type(DHCP or Static IP) for AnyplaceUSB-S4. When you select “Static IP” , you need to enter the static IP address(such as 192.168.254.254), Subnet Mask (such as 255.255.255.0) and Gateway (such as 192.168.254.1) then click “Submit” to set your USB server device to static IP address.

Network Setting	
Server Name	<input type="text" value="AnyplacUSB_4000000001"/>
DHCP Setting	<div>Static IP</div>
IP Address	<div><div>192</div><div>168</div><div>254</div><div>254</div></div>
Subnet Mask	<div><div>255</div><div>255</div><div>255</div><div>0</div></div>
Gateway	<div><div>192</div><div>168</div><div>254</div><div>1</div></div>
<div>Submit</div>	

Update Firmware

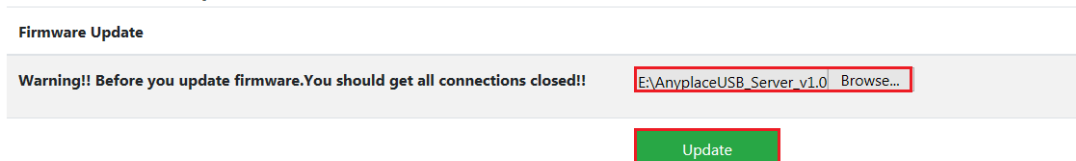
The “Update Firmware” button can upgrade the firmware for your USB server device when you need to. Under the web console interface, select “Update Firmware” to start upgrade the firmware for your AnyplaceUSB-S4 USB server device, after you click “Update Firmware”, if you find “Windows Security” message, you needs to key-in user name and password then click “OK” to into “Update Firmware” control panel, the default user name and password of USB server device are “**admin**” (the default user name and password are same).

Under the web console interface, select “Update firmware” and click “Update” for upgrade to a new firmware. After clicking “Update firmware”, you can find “Firmware Update” messages and one search input bar for select or input update firmware file.



After you select or input new update firmware file, then clicking “Update”, you to launch in order to continue upgrading AnyplaceUSB-S4’s firmware.

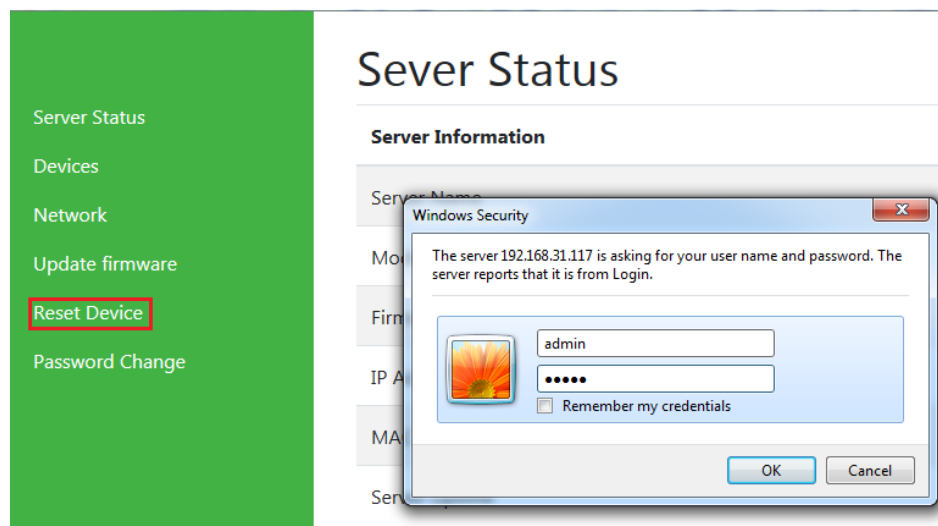
Firmware Update



While upgrading, you will don’t find any message, after the new firmware update completed, you will find the USB server device reboot.

Reset Device

The “Reset Device” button resets your USB server device when you need to. Under the web console interface, select “Reset Device” to reset your AnyplaceUSB-S4 USB server device, after you click “Reset Device”, if you find “Windows Security” message, you need to key-in user name and password then click “OK” to enter the “Reset Device” control panel, the default user name and password of USB server device are “**admin**” (the default user name and password are the same).



After clicking “Reset Device”, you can find “Server Information”, “Restore Factory Defaults”, “Reboot device” messages and two control buttons (“Reset to Defaults” and “Reboot”).

Server Information	
Server Name	AnyplacUSB_4000123456
Model	AnyplaceUSB 4 port server
Firmware Version	1.0
IP Address	192.168.31.117
MAC Address	00:04:d9:00:11:22
Server Uptime	00:58:15 up 5 days

Restore Factory Defaults	
Restore all options to their factory default states:	Reset to Defaults

Reboot device	
This will reboot AnyplaceUSB.	Reboot
If you are sure you want to do this. Please press the Reboot button.	

The “**Restore to Defaults**” control button restores the firmware to factory defaults.

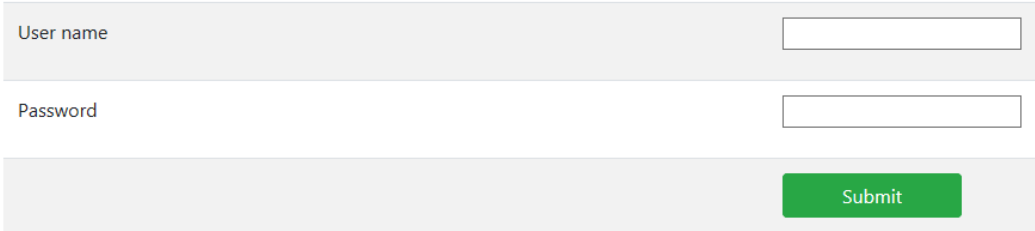
you can restore all options to factory default states by clicking the “Restore to Defaults” button; After clicking “Restore to Defaults”, a message “Reset to defaults and reboot” appeared, the USB server device will restore all options to factory defaults and reboot.

The “**Reboot**” control button reboot/reset your USB server device; After clicking “Reboot” control button, you will find “Reboot...” message and the USB server device will be reboot.

Password Change

The “Password Change” control button changing web authentication for your USB server device when you need to. Under the web console interface, select “Password Change” for your AnyplaceUSB-S4 USB server device, after you click “Password Change”, if you find “Windows Security” message, you needs to key-in user name and password then click “OK” to into “Password Change” control panel, the default user name and password of USB server device are “**admin**” (the default user name and password are same).

After click “Password Change”, you can find “Changing Web Authentication” message and two input box (for “User name” and “Password”).



Changing Web Authentication

User name

Password

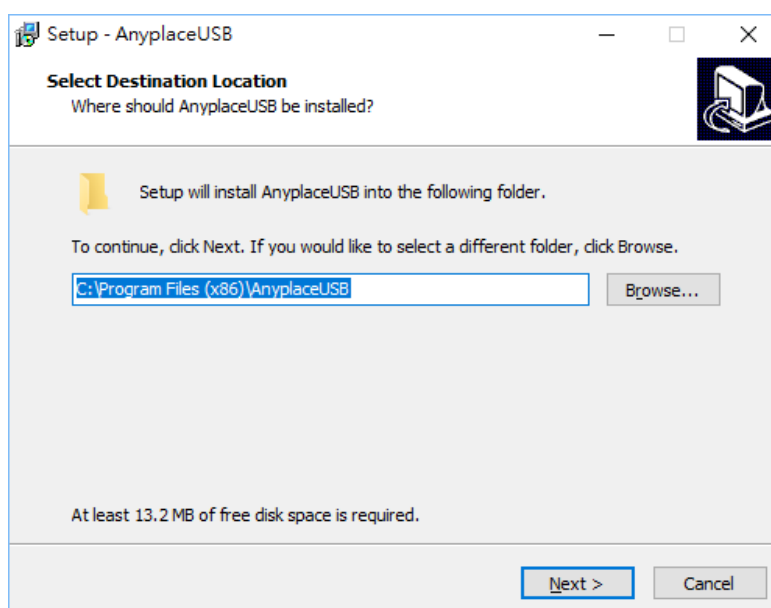
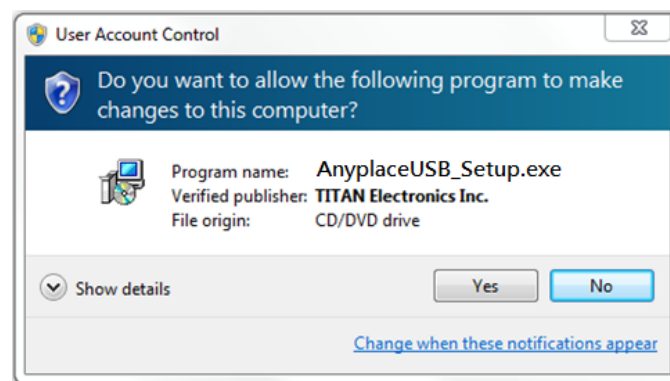
You can input new user name and new password to change the login user name and password for your USB server device. After input new user name and password for your USB server device, please clicking “Submit” to changing web authentication, you will find “Changing Authentication ...” message and the USB server device will be change to new login user name and password.

RUNNING ANYPLACEUSB SOFTWARE PROGRAM

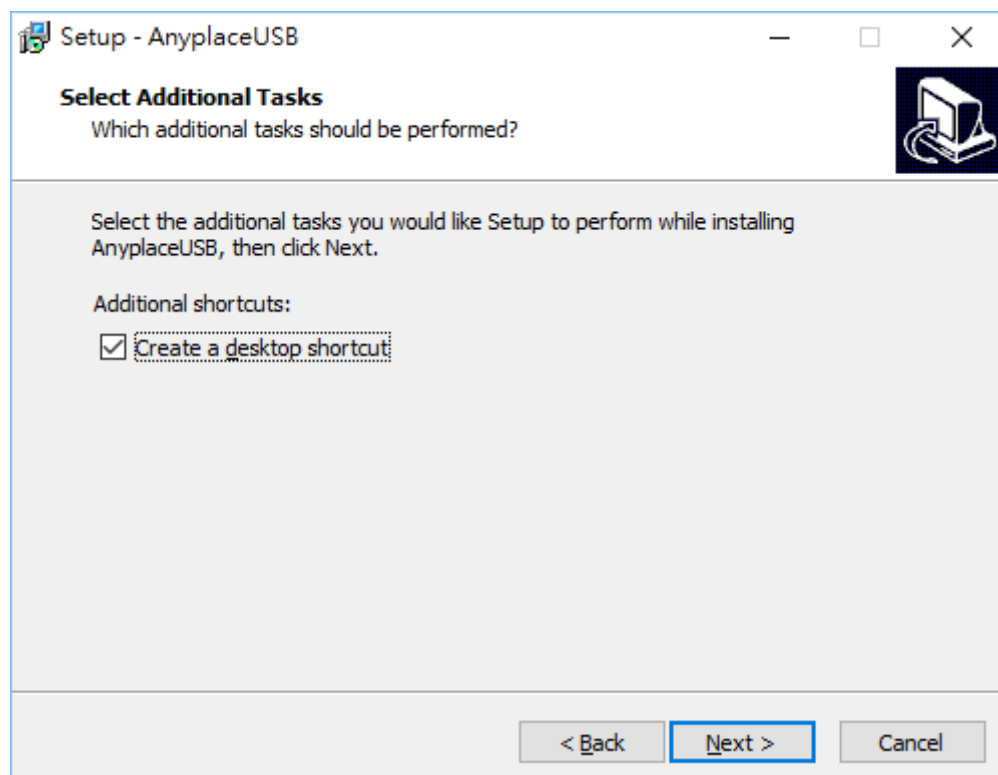
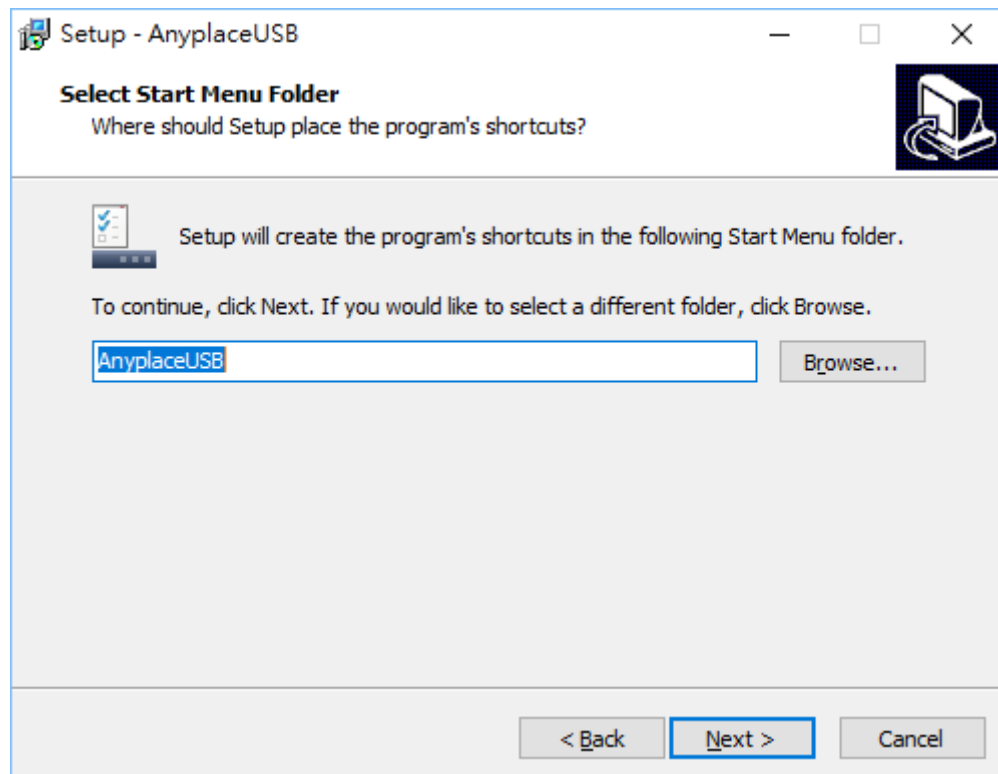
The AnyplaceUSB software program is an advanced USB virtualization solution that allows you to connect remote USB devices over networks easily. Thus, any USB devices connected to the AnyplaceUSB-S4 4-port USB server device could be accessed from anywhere in the world (via internet), as if it were attached directly to the remote PC.

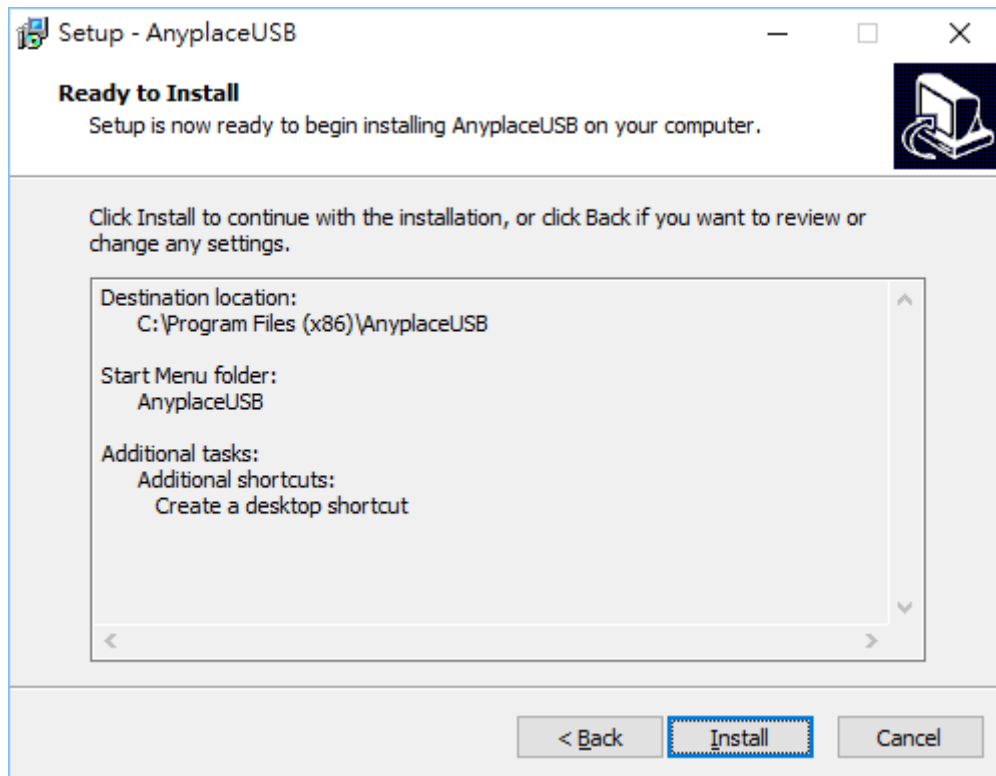
The AnyplaceUSB software program with “CLIENT” option to connect remote USB devices from network.

1. Insert the software CD into your CD-ROM or DVD-ROM drive.
2. Open files in the CD and double click “AnyplaceUSB_setup” to install AnyplaceUSB software program.
3. When the confirmation for “User Account Control” appears, click “Yes” and the “Setup - AnyplaceUSB” message appears. Click “Next” to proceed with the installation of AnyplaceUSB software program.

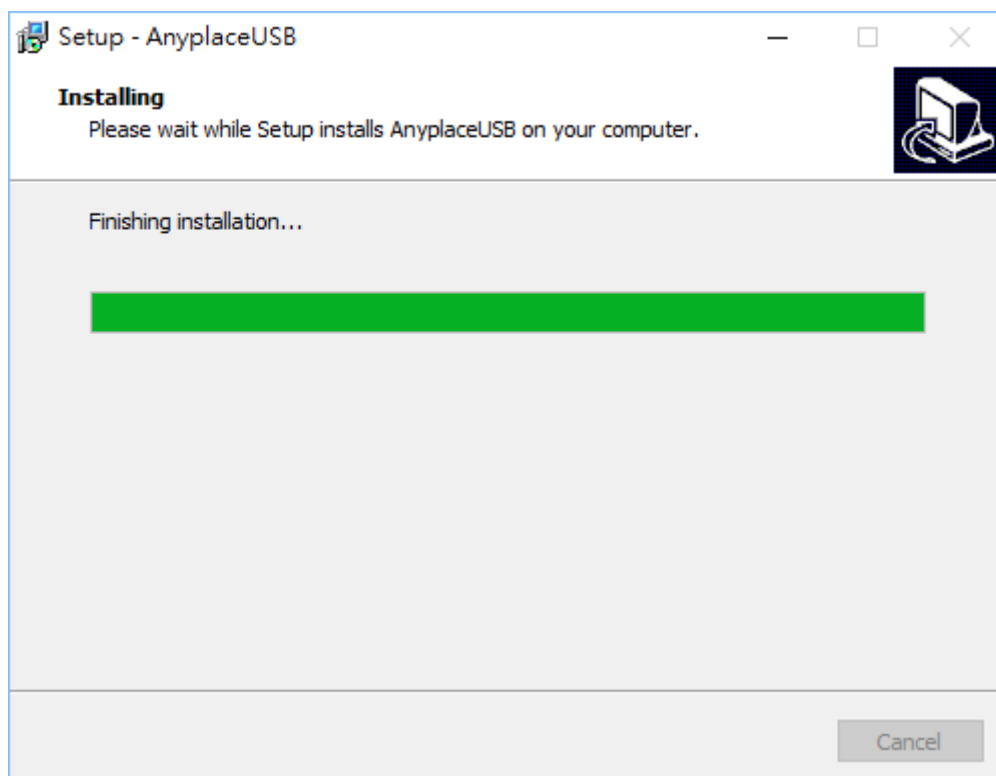


4. After you click “Next”, you will see following information. Click on “Next” and the “Ready to Install” message appears. Click “Install” to install AnyplaceUSB software program.

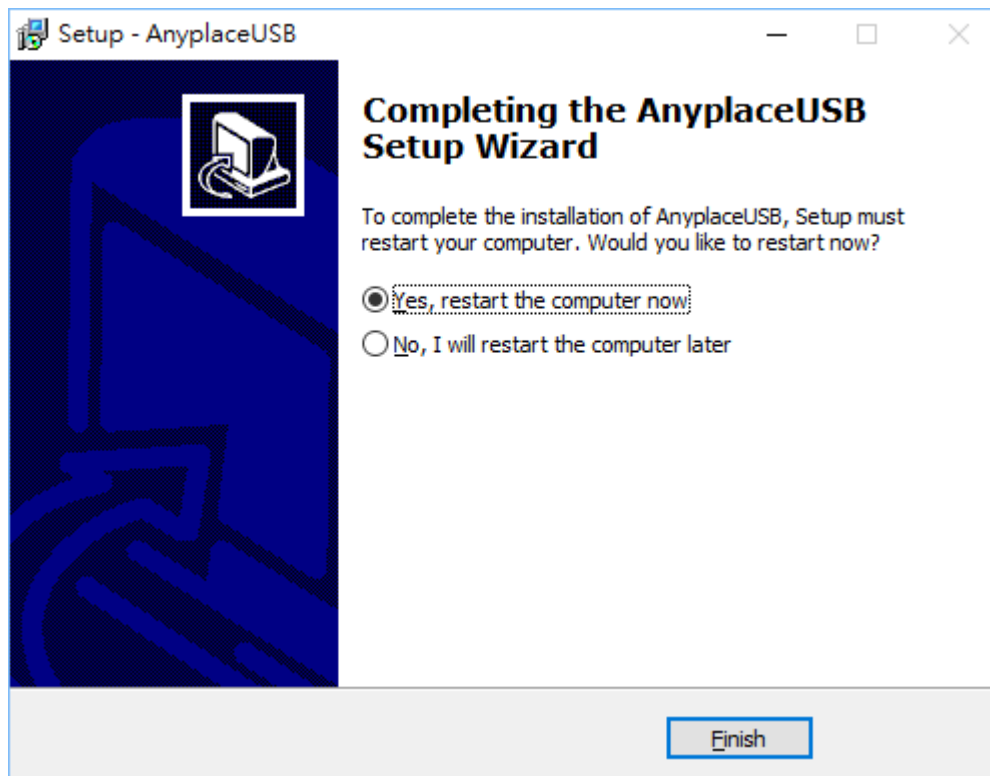




5. After you click “Install” to install AnyplaceUSB software program, you will see the following information.



When the message “Completing the AnyplaceUSB Setup Wizard” appears, click “Finish” to restart the computer and finish the AnyplaceUSB software program installation.



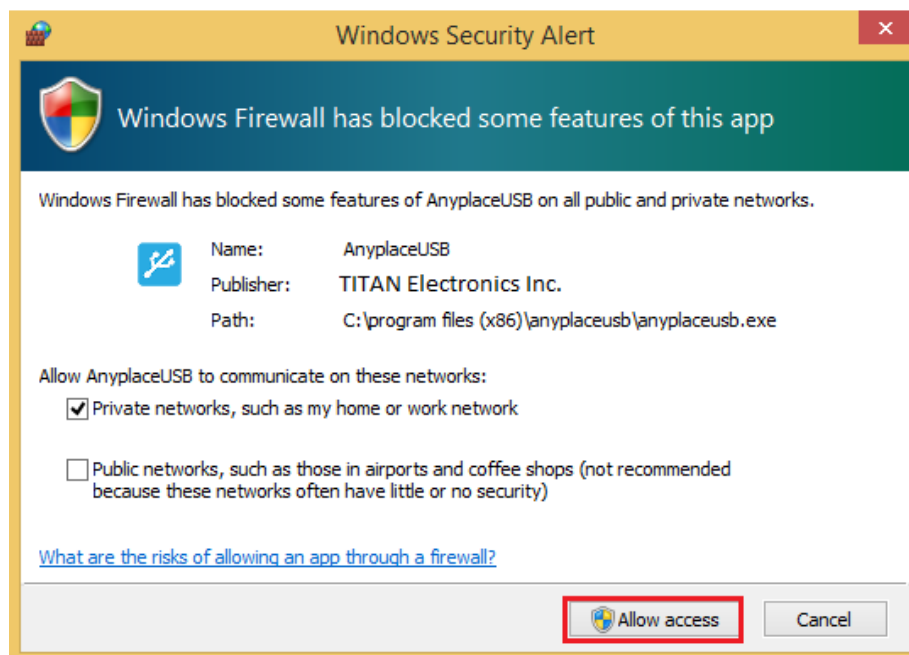
Running AnyplaceUSB Software Program in Client Computer

Please connect your client computer to a network (Internet/LAN/WAN) environment.

Double click the shortcut icon of “AnyplaceUSB” on your client computer to launch AnyplaceUSB software program.



When you start the program for the first time, your Windows OS will prompt you for Firewall access. Please make sure you unblock the software or grant it access, otherwise the program will not work correctly.

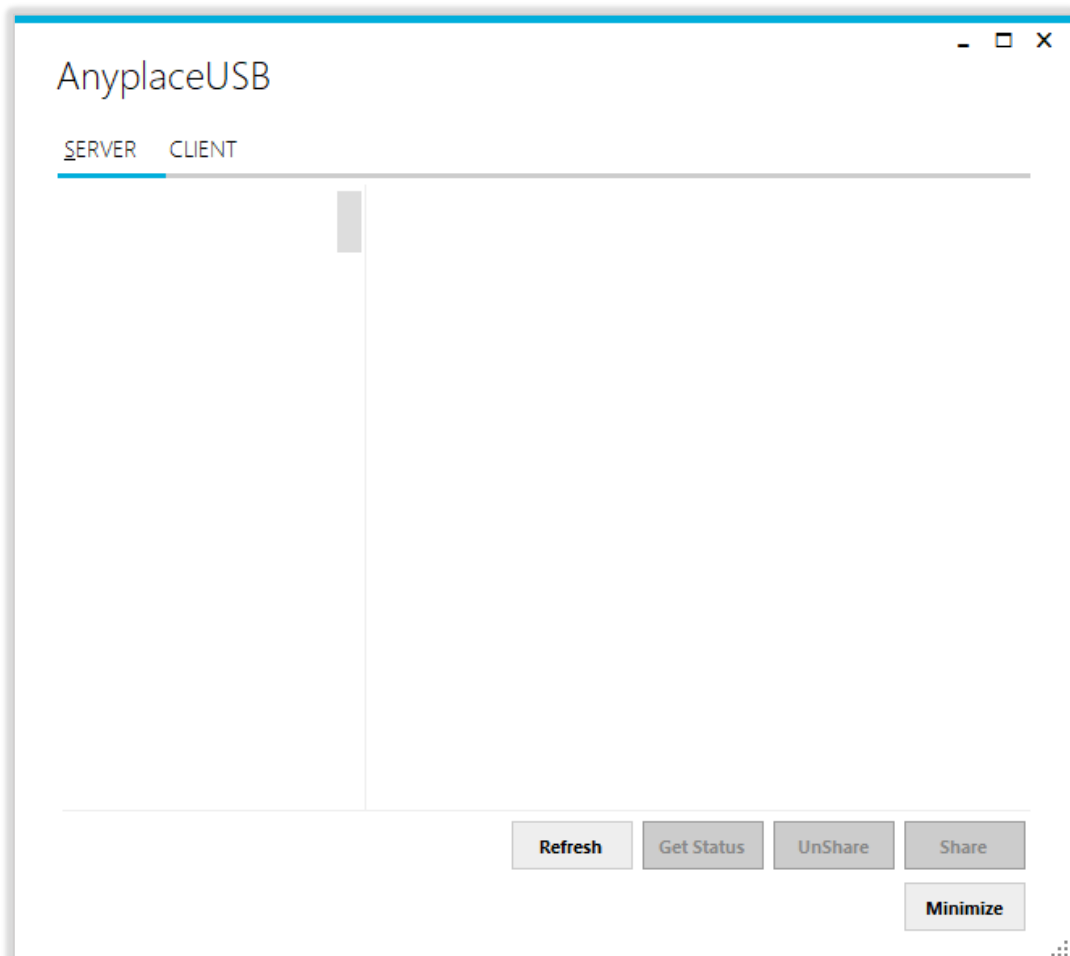


Running AnyplaceUSB Software Program in CLIENT Mode

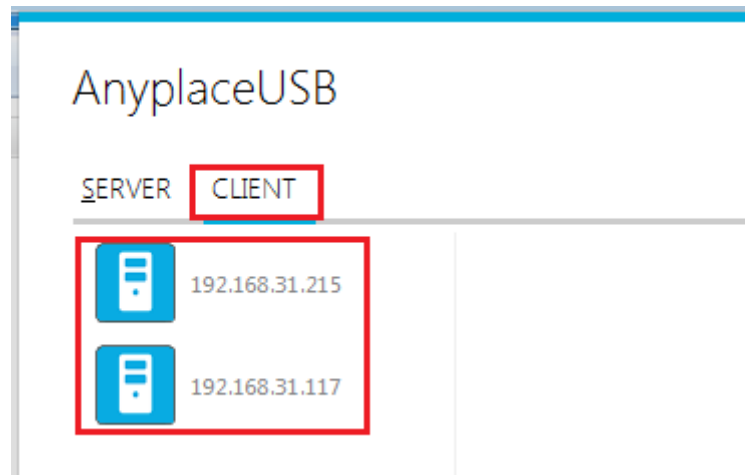
The AnyplaceUSB software program client mode can discover USB server device installed in your local network automatically, in most cases there is no need to specify remote IP address or the hostname of the USB server devices. Select the correct USB server device from the list in order to connect to the remote shared USB devices.

To connect from client computer to a remote USB device shared on the USB server device, you should first find available shared USB devices and add them into client computer. The shared USB devices are detected by AnyplaceUSB software program.

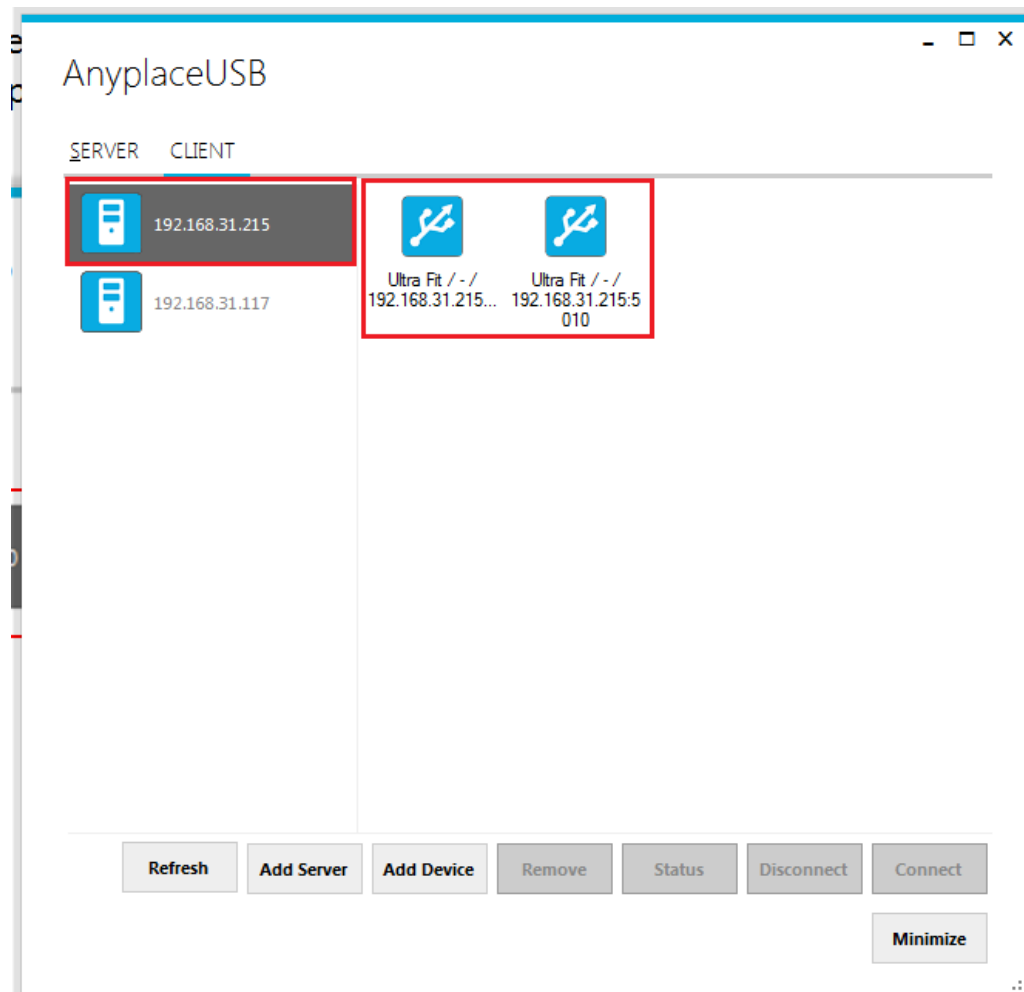
Once you have started up the AnyplaceUSB software program, you will see the main window as shown below.



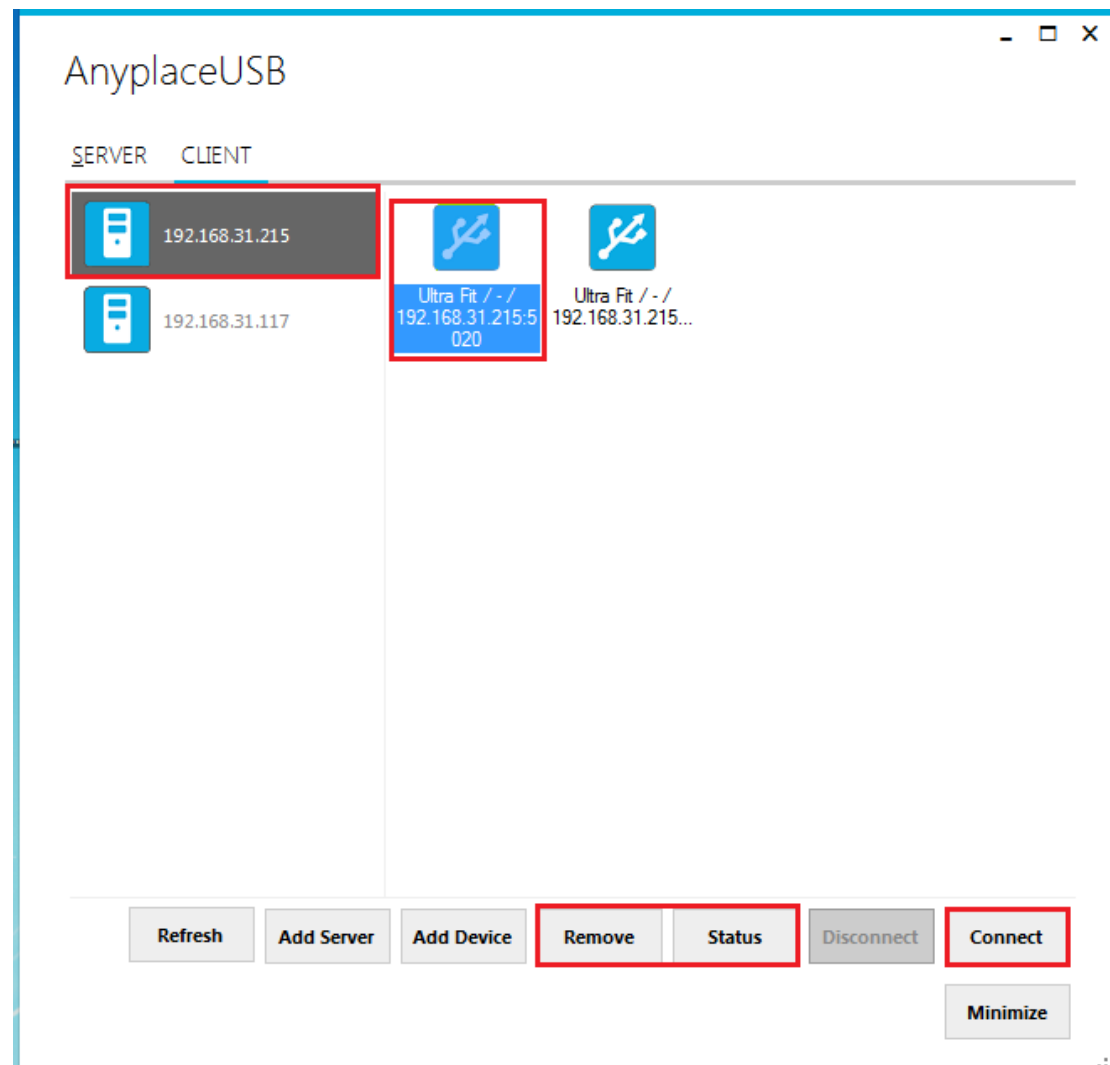
The main window consists of two toolbars (SERVER and CLIENT). Select “CLIENT” for connect to remote shared USB devices. After selecting “CLIENT” you will see all USB server devices with their IP addresses on the left of the main window, which displays all USB server devices discovered on the network.



Click on any USB server device and the remote shared USB devices will be detected automatically and displayed.



After you click any remote shared USB device shared by the USB server device, the **“Remove”**, **“Status”**, **“Connect”** buttons become available.

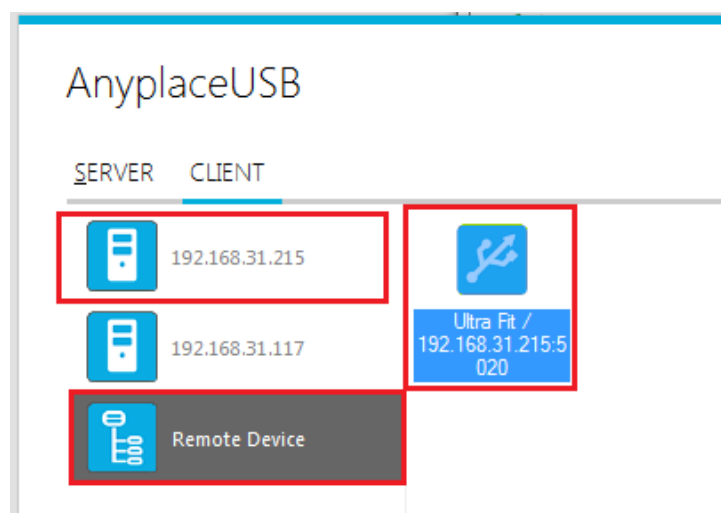


Connect Remote Shared USB Devices to your Computer

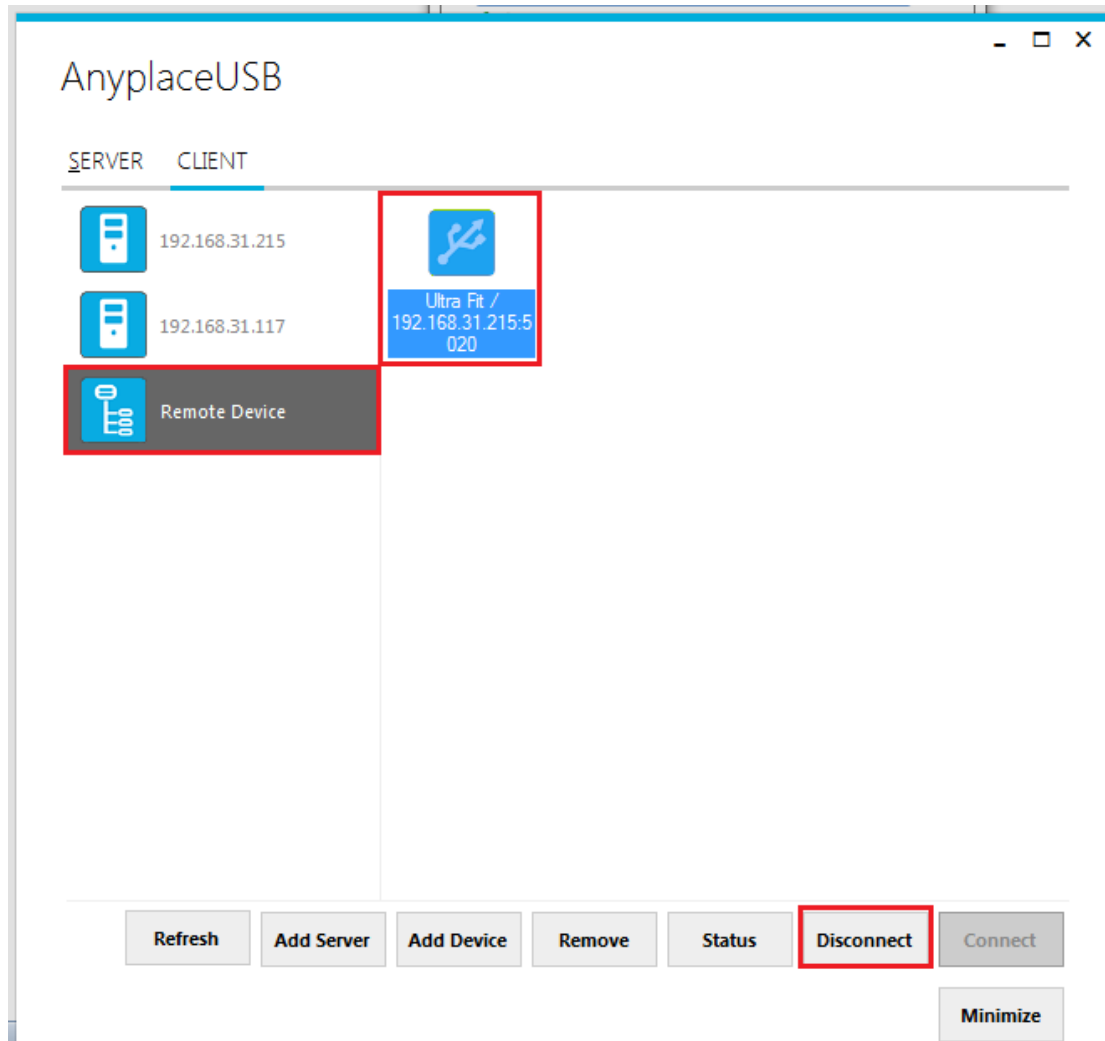
To connect the remote shared USB devices to your computer (client), click the **“Connect”** button to connect this remote shared USB device, and you will see a **“Connect success!”** to indicate success. This may take a while depending on the speed of your client computers, and the speed of your network. Please refrain from rapidly connecting to and disconnecting from the same device in a short period of time, as this may be a cause for communication errors. Click **“Ok”** to finish connecting to the remote shared USB device to your PC system(client).



After connecting to the remote shared USB device in your computer successfully, you will see a **“Remote Device”** on the left of the main window. Click on this **“Remote Device”** and you will find a duplicated remote shared USB device. The computer will install drivers for this remote shared USB device automatically. However, if your Windows OS doesn't support the driver for this remote shared USB device, you need to install the driver manually.



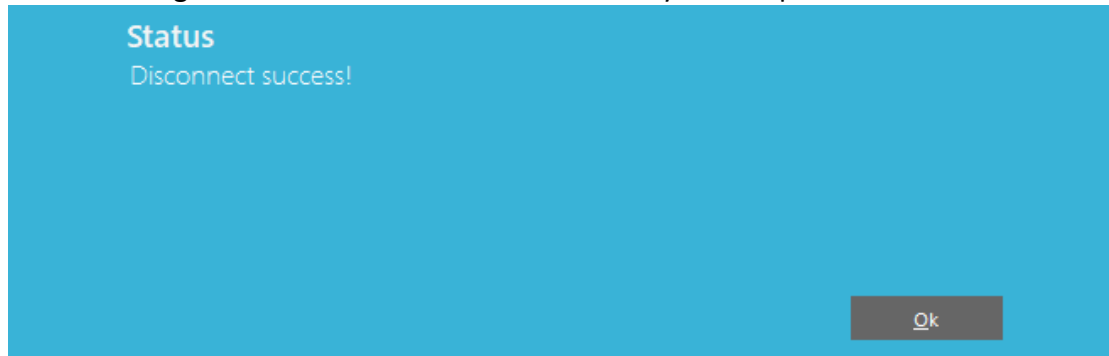
To check the remote shared USB device, please click on this remote shared USB device again. You will see that this shared USB device is connected to your computer and the “Disconnect” button is available.



Other computers in the same network will also see this remote shared USB device connected to your computer, and will not be able to connect to this remote shared USB device unless you disconnect it.

Disconnect Remote Shared USB Devices from your Computer

To disconnect a remote shared USB device from your computer, click the **“Disconnect”** button to disconnect this remote shared USB device from your computer, and you will see a “Disconnect success!” message to indicate success. Click “Ok” to finish disconnecting the remote shared USB devices from your computer.

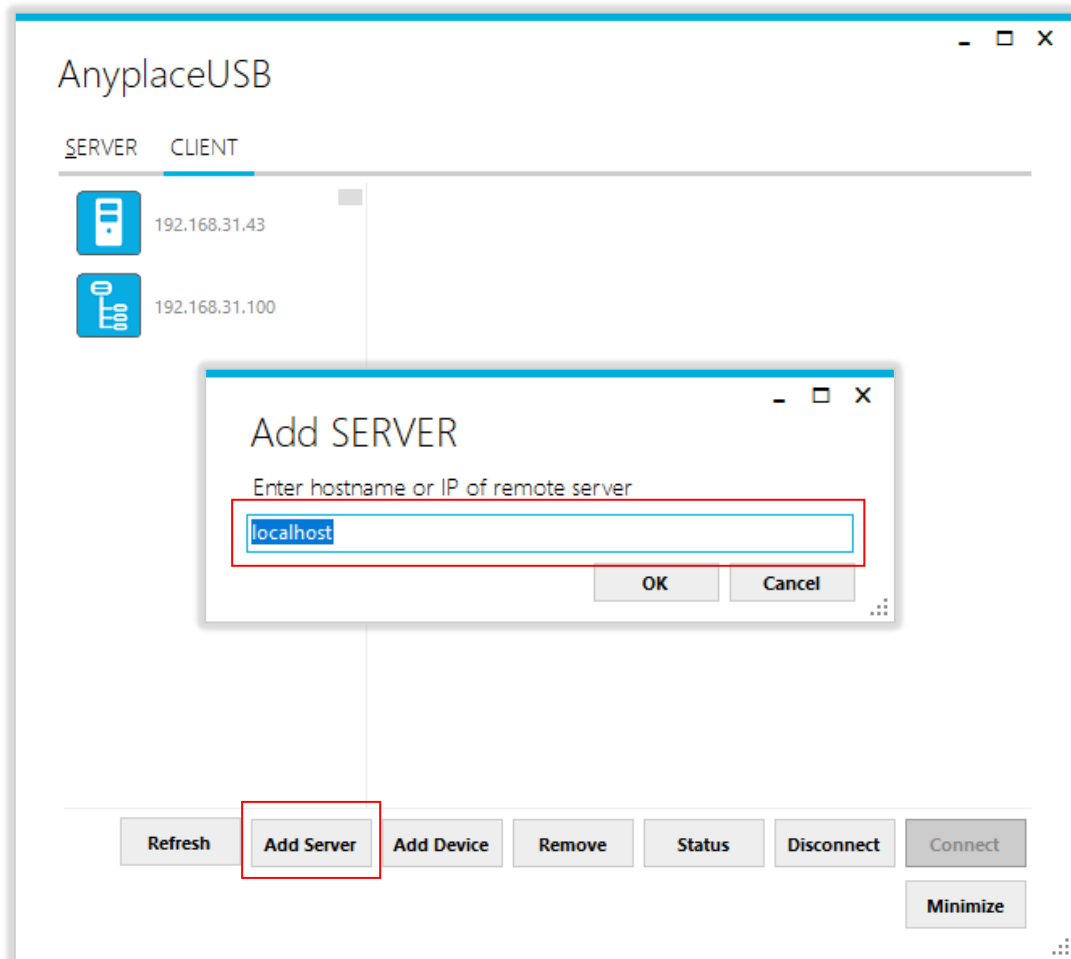


Note: After the USB device disconnected from USB server devices, please wait about 2 minutes to unload the pervious driver before connecting the USB device again, otherwise the USB device will not work correctly.

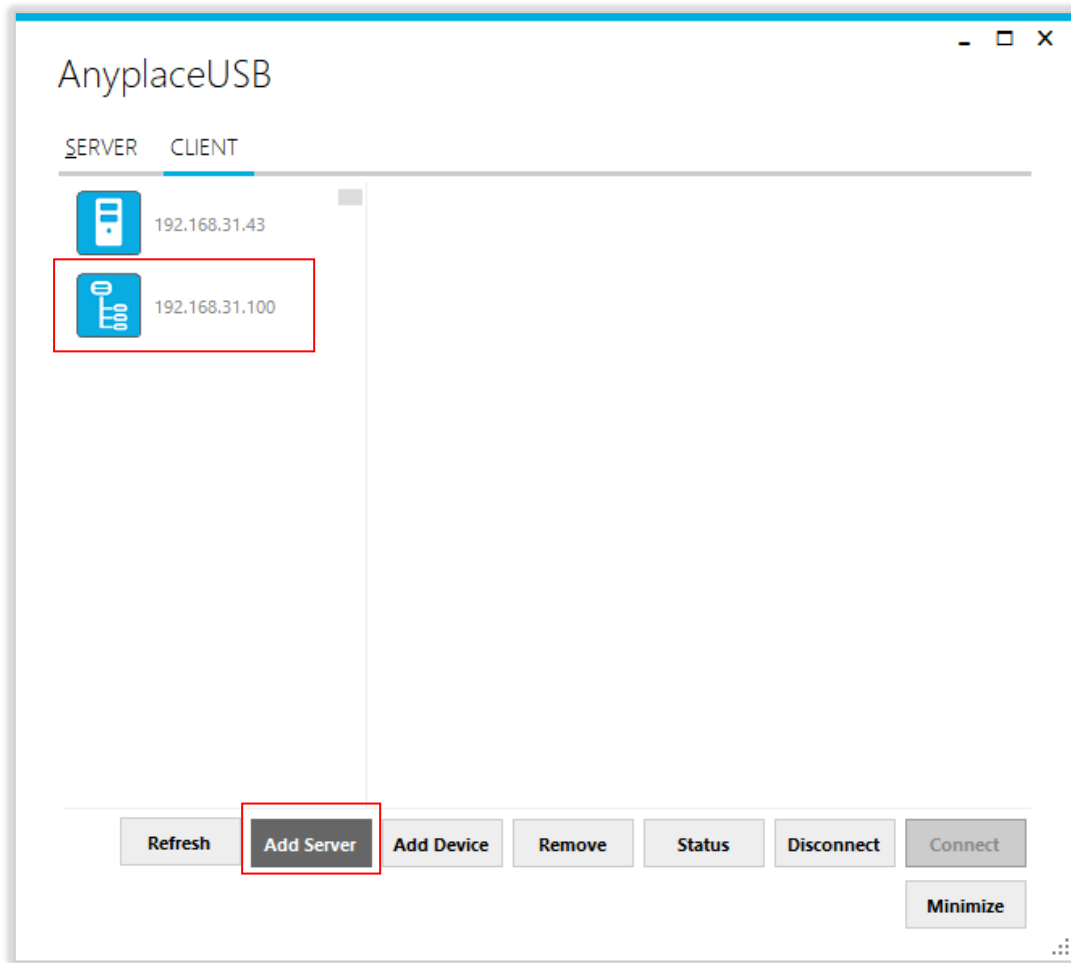
Other Buttons in CLIENT Mode

“Add Server” Button

If the USB server device is not detected automatically, for example, when USB server device is located in a different subnet, you can search for it manually. Click “Add Server”, and enter host name or IP address of the USB server device, then click “OK” to finish adding a remote USB server device manually.

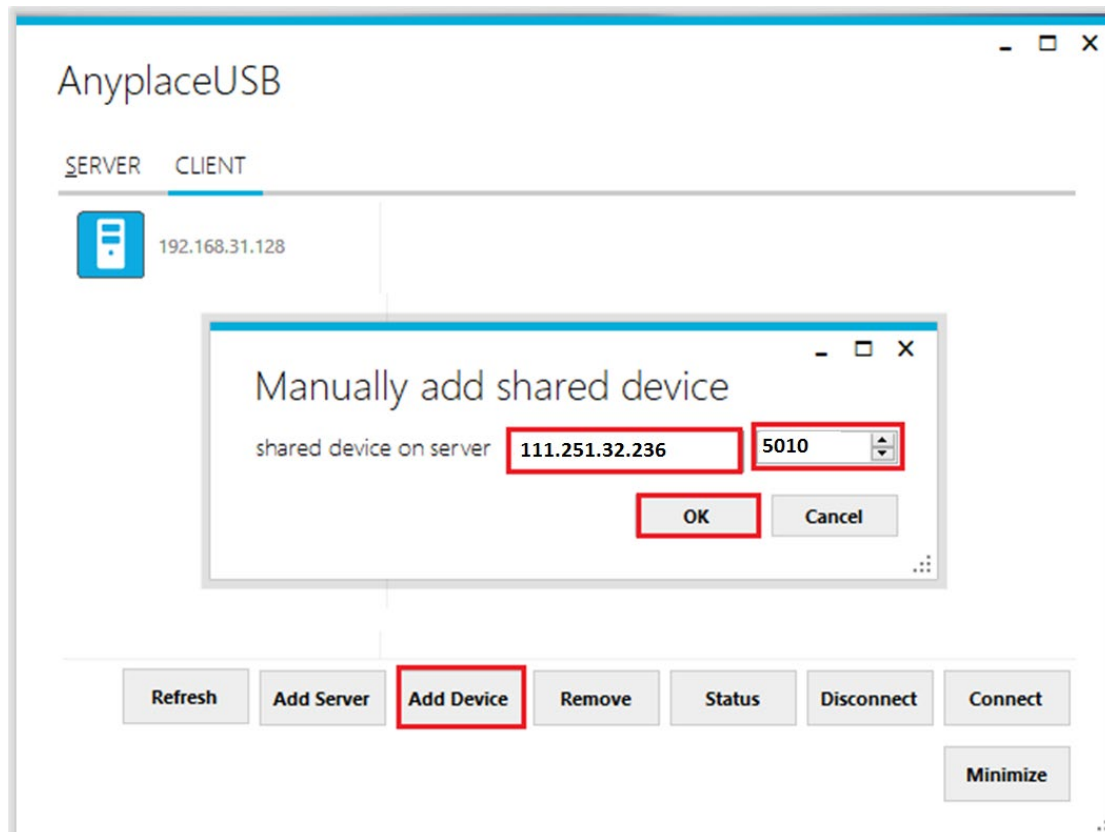


After adding a remote USB server device manually, you will see the remote USB server device (with IP address) added on the left of the main window.

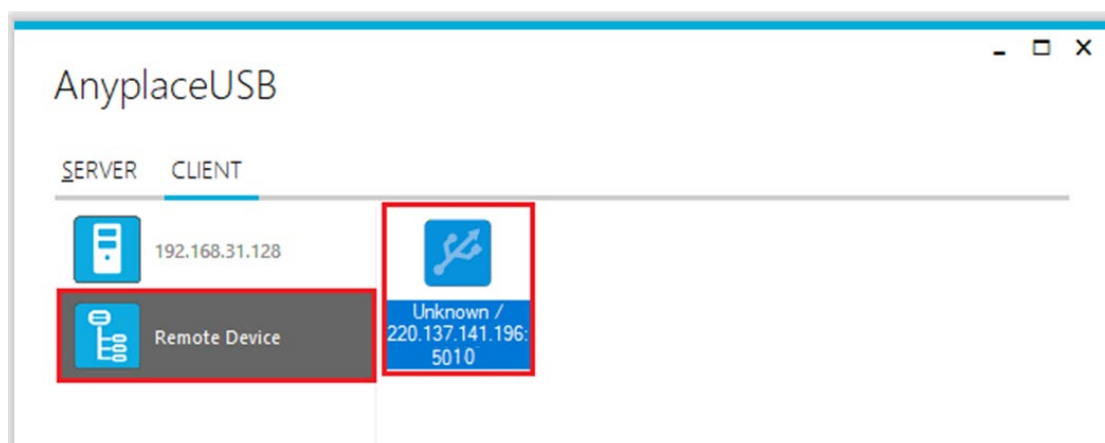


“Add Device” Button

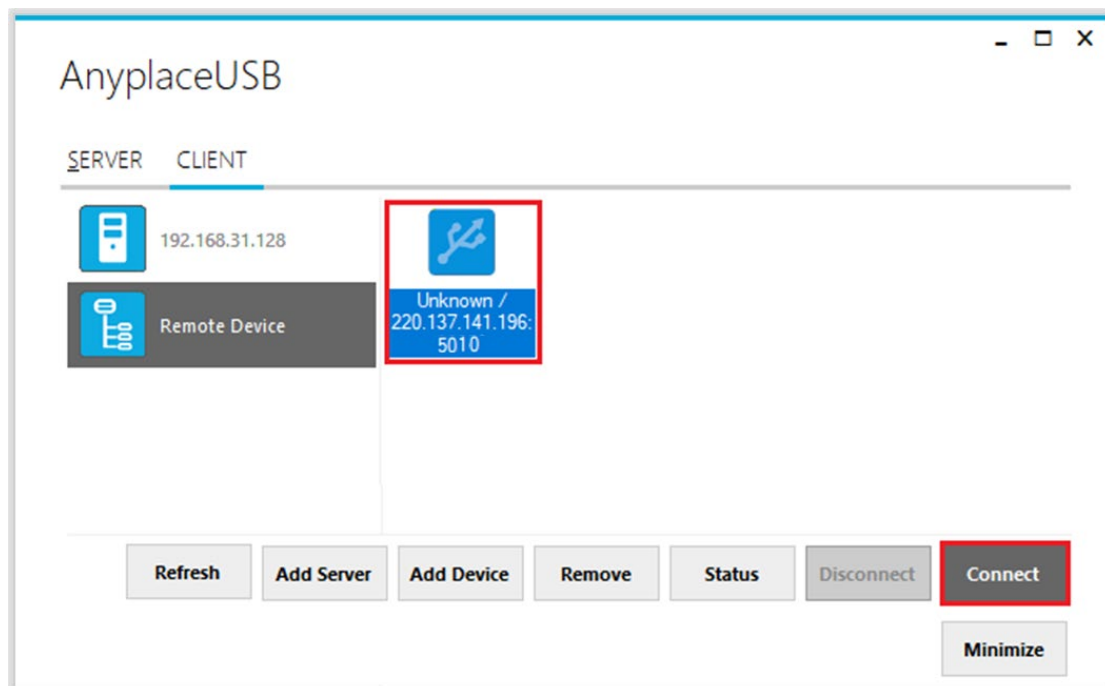
You can also use the “Add Device” button, in case you know the IP address of remote USB server device and the TCP port number, on which a USB device is shared. Click “Add Device”, enter IP address of the remote USB server device, and the TCP port number of the remote shared USB device in “Manually add shared device”. Click “OK” to finish adding a remote shared USB device in your computer manually.



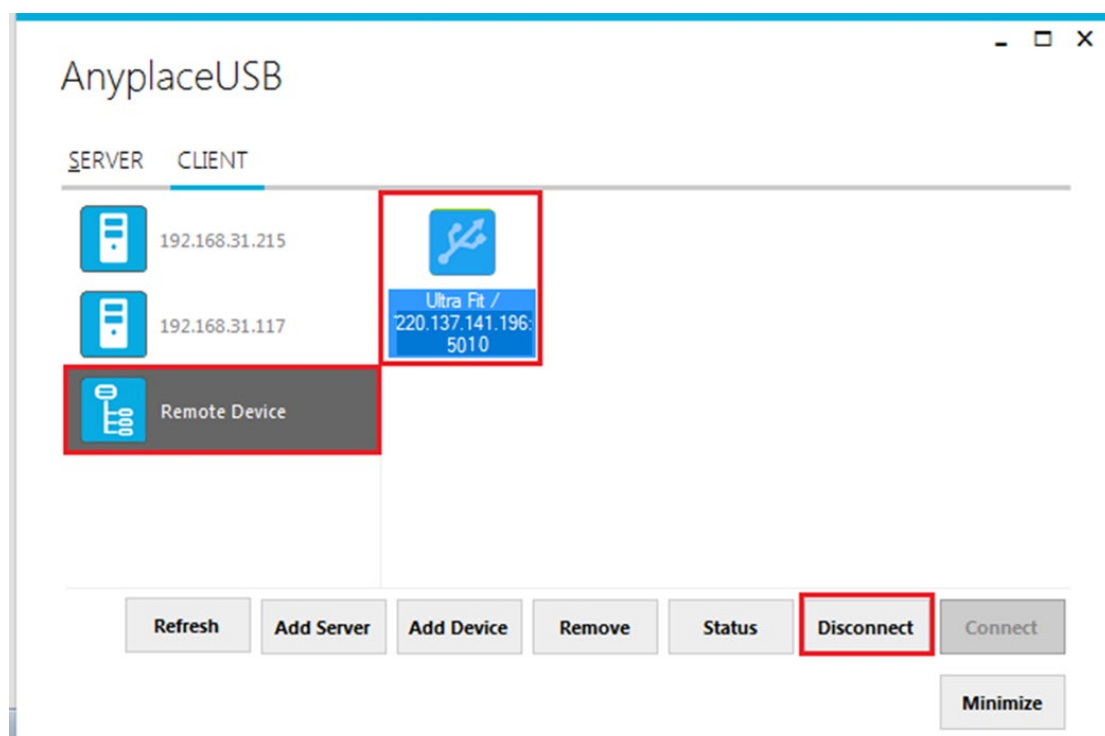
When you add a “Remote Device” manually, you will see an “Unknown” device added under “Remote Device”.



Click **“Connect”** to connect to this unknown USB device, and you will see a “Connect success!” message to indicate success. Click “Ok” to finish connecting to the “Unknown” USB device into your computer.

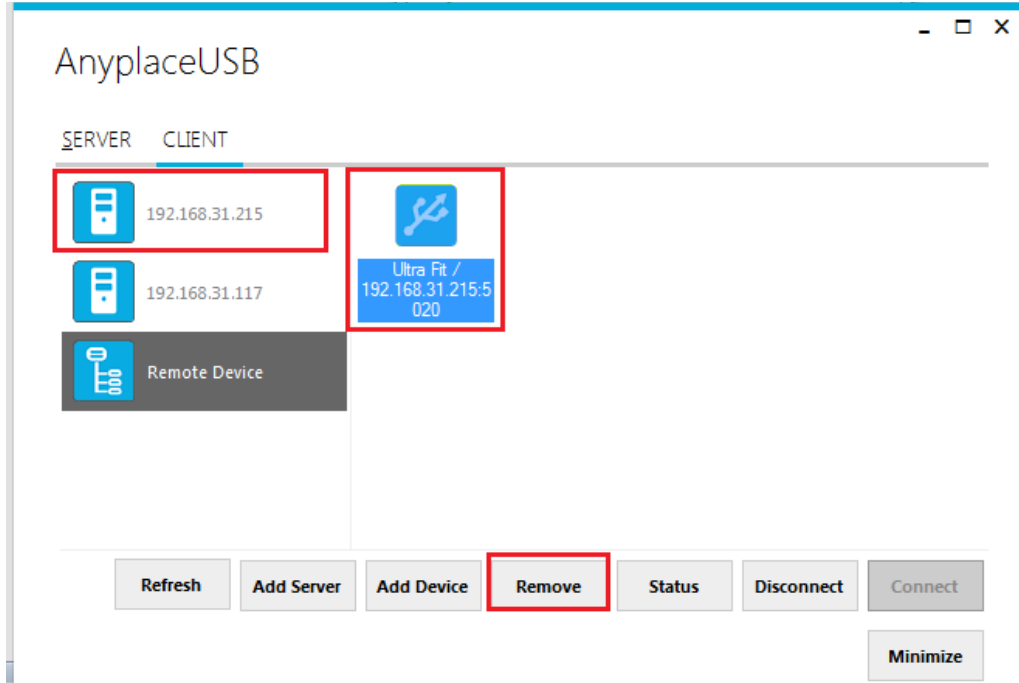


After connecting the “Unknown” USB device into your computer successfully, it will change to a remote shared USB device with device description, and the “Disconnect” button becomes available; the computer will install drivers for this remote shared USB device automatically. However, if your Windows OS doesn’t support the driver for this remote shared USB device, you need to install the driver manually.



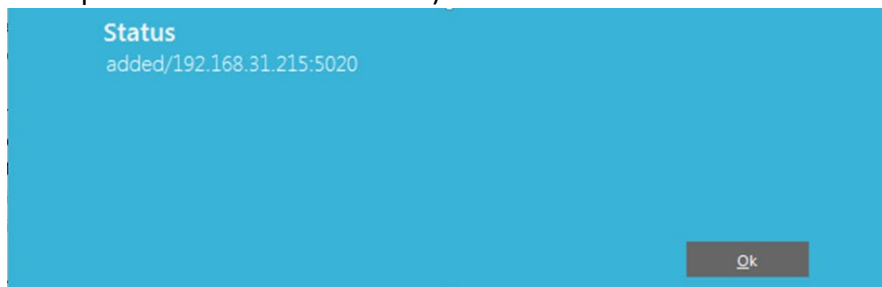
“Remove” Button

To remove an USB server device or a remote shared USB device from your computer manually, select a USB server device or a remote shared USB device and click “Remove”. You will see the USB server device or remote shared USB device removed from your computer.



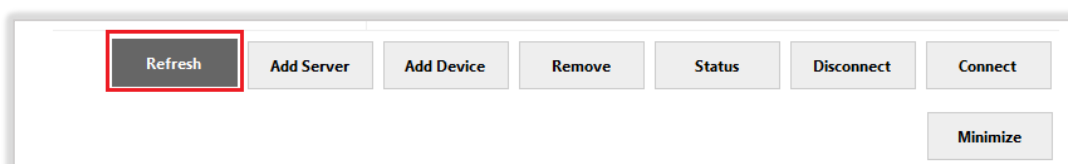
“Status” Button

Click the “**Status**” button to get the status of shared USB device. When the USB device is connect to AnyplaceUSB-S4 USB server device, the status will show “added/192.168.31.215:5020(“192.168.31.215” is IP address of USB server device and “5020” is TCP port number of USB device)”.



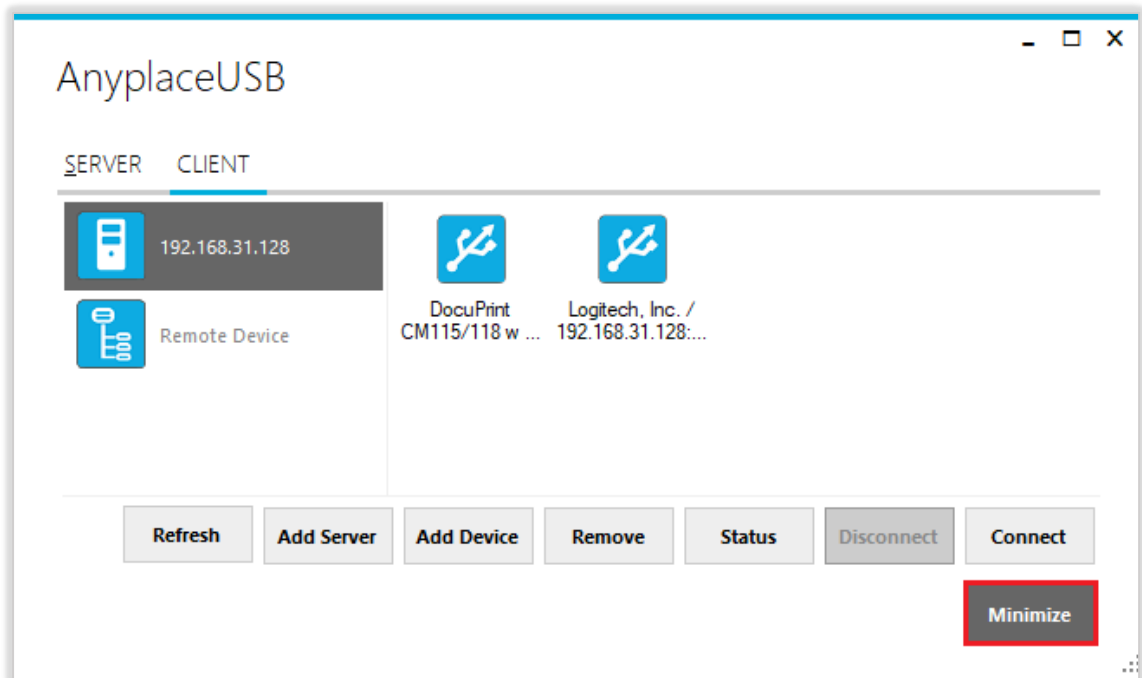
“Refresh” control button

The information on the main window of AnyplaceUSB software program may be incorrect or absent in some cases. In case this happens, you can click the “Refresh” button to reload the information for shared USB devices.

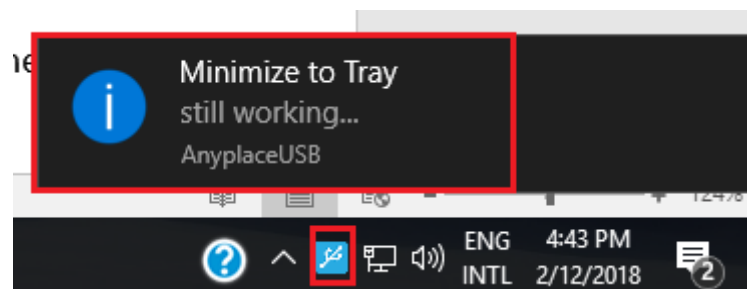


“Minimize” control button

You can click on the “Minimize” button to minimize the window of AnyplaceUSB software program to the system tray.



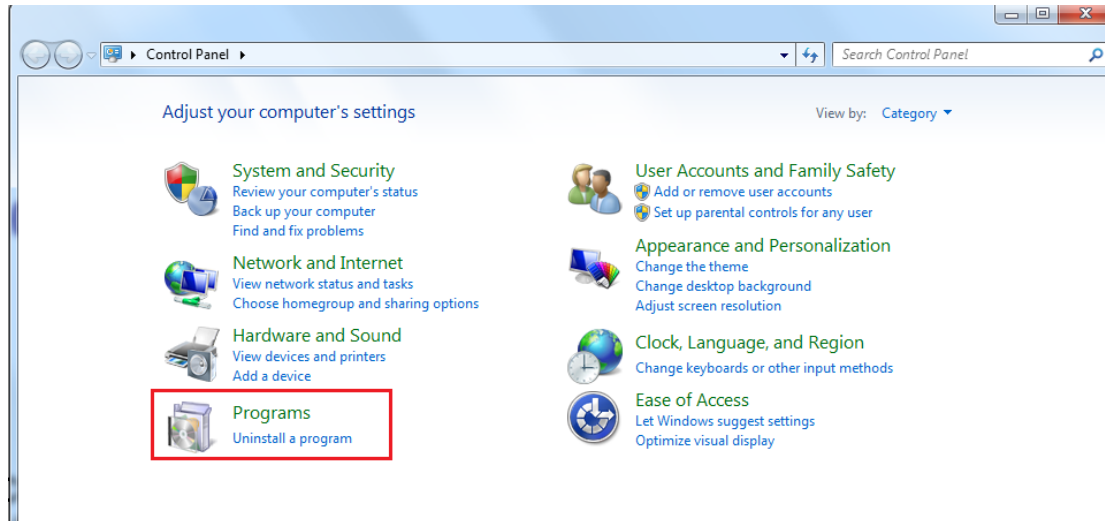
After clicking on “Minimize”, you will see “Minimize to Tray” message and the window of AnyplaceUSB software program will move to the system tray.



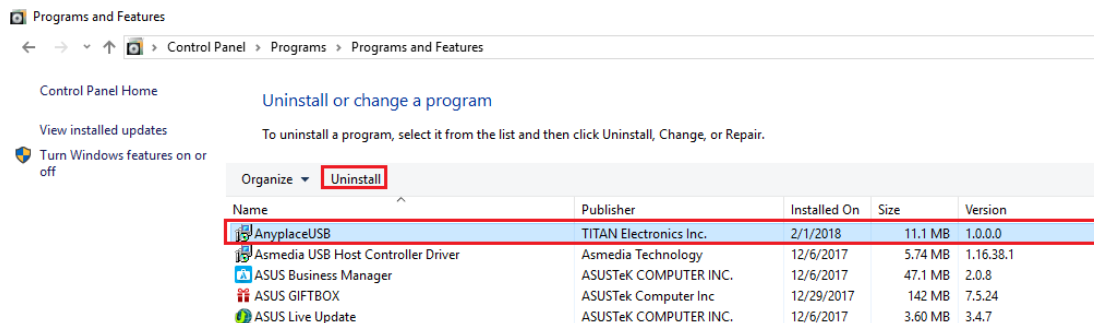
AnyplaceUSB SOFTWARE UNINSTALLATION

Uninstalling AnyplaceUSB Software Program

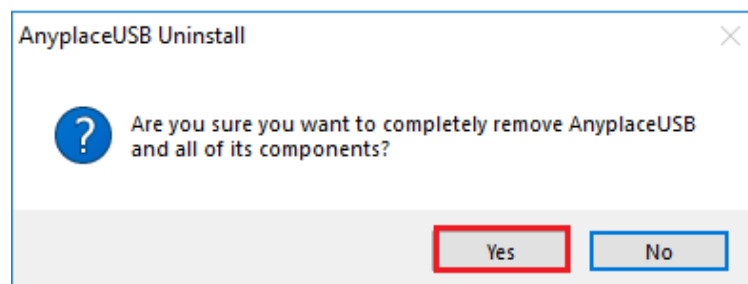
To uninstall AnyplaceUSB software program, click the "Start" button and navigate to "Control Panel". Choose "Uninstall a program" under "Programs".



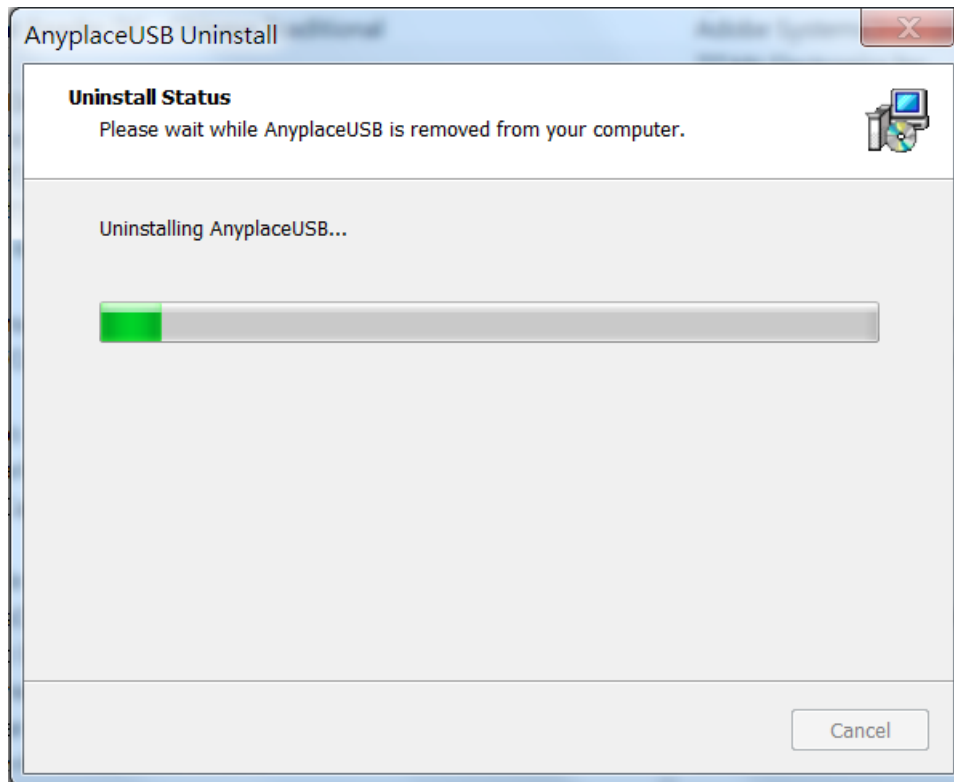
After you click "Uninstall a program", a list of all your installed programs will be shown. Select "AnyplaceUSB" and click on "Uninstall" to uninstall AnyplaceUSB software program.



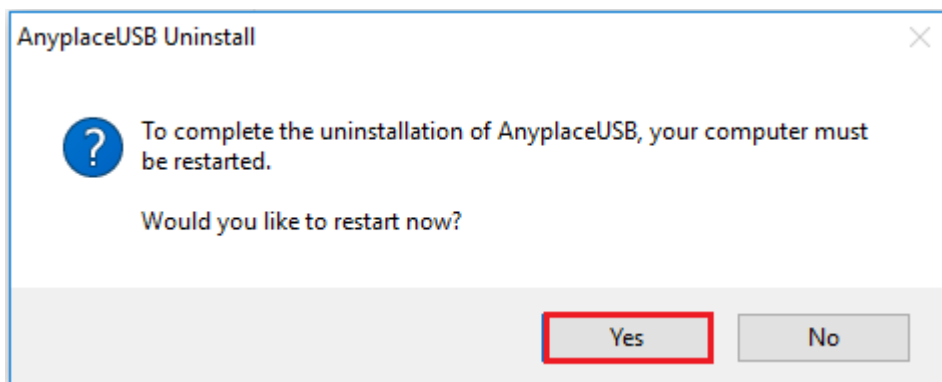
When you click on "Uninstall", a message will ask "Are you sure you want to completely remove AnyplaceUSB and all of its components?". Confirm by clicking "Yes".



When uninstalling AnyplaceUSB software program, you will find the following message.



After successfully removing AnyplaceUSB software program, a message stating that "To complete the uninstallation of AnyplaceUSB, your computer must be restarted." will be shown.



Click on "Yes" to restart your computer to finish removing AnyplaceUSB software program.

Additional Information

USB Server Device Status LEDs

The LEDs indicate the status on the USB server device.

“PWR” (Power/Ready) LED:

The “**PWR**” (Power/Ready) red LED indicates the AnyplaceUSB-S4 is working fine and booted properly.

USB Port Status LEDs:

The USB Port LEDs indicate the USB ports status, the **green** LED is on, when your USB devices have connected to the USB ports successfully.

Ethernet Status LED's:

The “**Speed**” green LED (Ethernet Speed) indicates speed of Ethernet connection .

Steady on: The device is connected to a 100M Ethernet connection.

Steady off: The device is connected to a 10M Ethernet connection.

The “**Link**” yellow LED indicates Ethernet is linked.

Steady on: The Ethernet link has established.

Steady off: The Ethernet cable is disconnection.

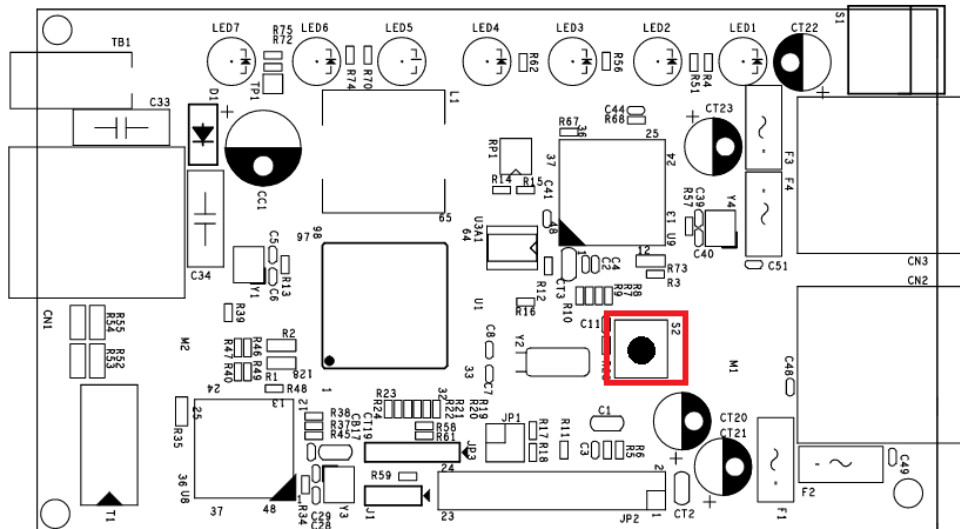
Blinking: Ethernet data transmission is occurring.

The Ethernet Link LEDs will flash when Ethernet data is transmitted or received.

Note: The older 10 Mbit/s Ethernet is not a good base for USB server device support.

Hardware Restore Factory Default Button

The anyplaceUSB-S4 USB server device supports a hardware factory defaults button to restore the default settings. This can be done by pressing the factory default button for around 10 seconds.



Hardware Reset Button

The AnyplaceUSB-S4 USB server supports hardware reset button to reset the hardware. When the hardware reset button is pressed for a short duration, it will reset the AnyplaceUSB-S4 USB server device system.

