



Single Port Managed USB 3.2 Gen 1 Adapters

w/ ESD Surge Protection and Software On/Off Control

Model Number: *CG-1MGDU3A, CG-1MGDU3C, CG-1MGDUC3C*

Product Manual

Coolgear, Inc.

Version: 1

Date: 2026-01-12



Table of Contents

1. Introduction	2
2. Connector Layout	3
3. Hardware Installation	5
4. USB Hub Administrator Utilities Installation	6
5. Restore to Factory Settings	8
6. Environmental Specifications	9

Revision History

Revision	Date	Comments
1.0	2023-09-27	First Release

1. Introduction

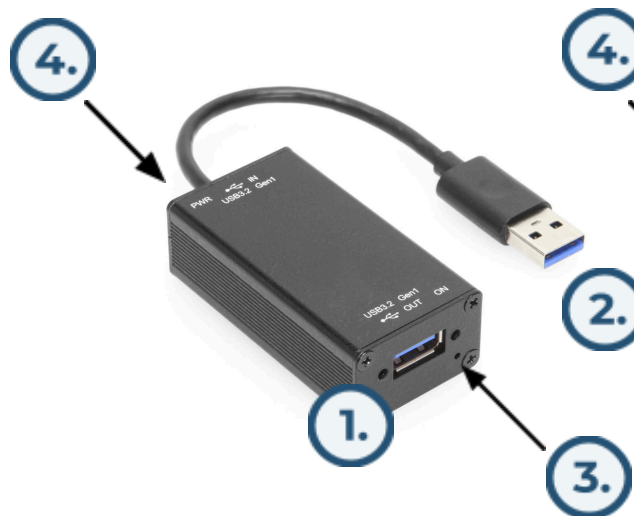
Thank you for purchasing one of our single port USB Managed USB 3.2 Gen 1 adapters. These SuperSpeed hubs come with management software utilities that allow you to control the power to its downstream device or reset the entire hub, either manually or through application programs. This ensures the reliable performance of your critical USB applications and enhances the return on your investment.

Features:

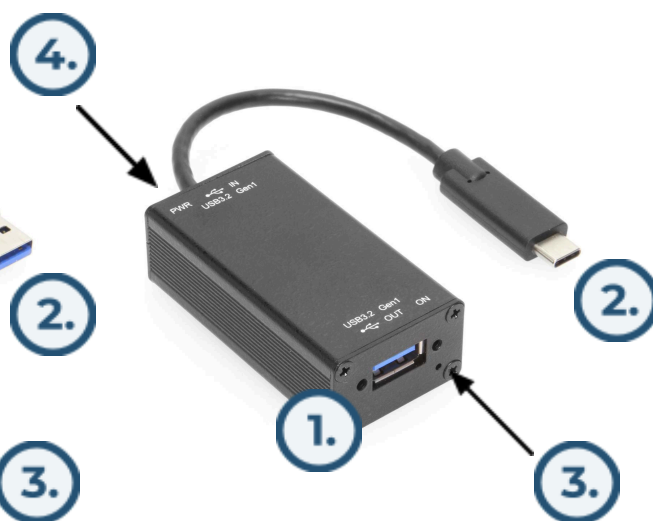
- ✓ Compliant with USB Specification 3.2 Gen 1
- ✓ Metal Case, DIN Rail and wall mountable
- ✓ Software Manageable Bus power for each Port
- ✓ Supports software utilities for Windows (7 and above), MacOS and Linux
- ✓ 2 LEDs Indicating the bus power state of Upstream and Downstream Ports
- ✓ Supports 5Gbps (Super-speed), 480Mbps (High speed), 12Mbps (Full-speed) and 1.5Mbps (Low-speed) Speed
- ✓ Supports 15KV ESD Level 4 Protection for Each Port
- ✓ Bus Powered, no Input Power is Required
- ✓ Supports USB Battery Charging v1.2 : CDP, DCP modes

2. Connector Layout

CG-1MGDU3A

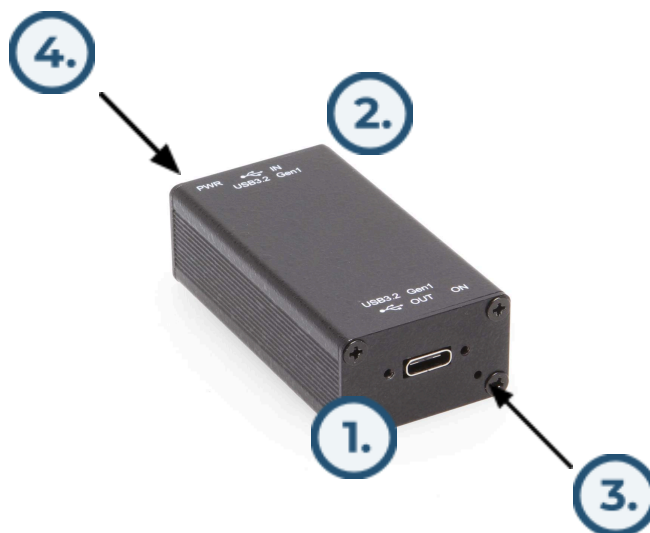


CG-1MGDU3C



1	Downstream Port	USB 3.2 Gen 1 Female Type-A with Screw-Locking capabilities
2	Upstream Port	USB 3.2 Gen 1 Male Type-A (CG-1MGDU3A) USB 3.2 Gen 1 Male Type-C (CG-1MGDU3C)
3	LED Indicator	Downstream port status indicator
4	LED Indicator	Upstream power indicator

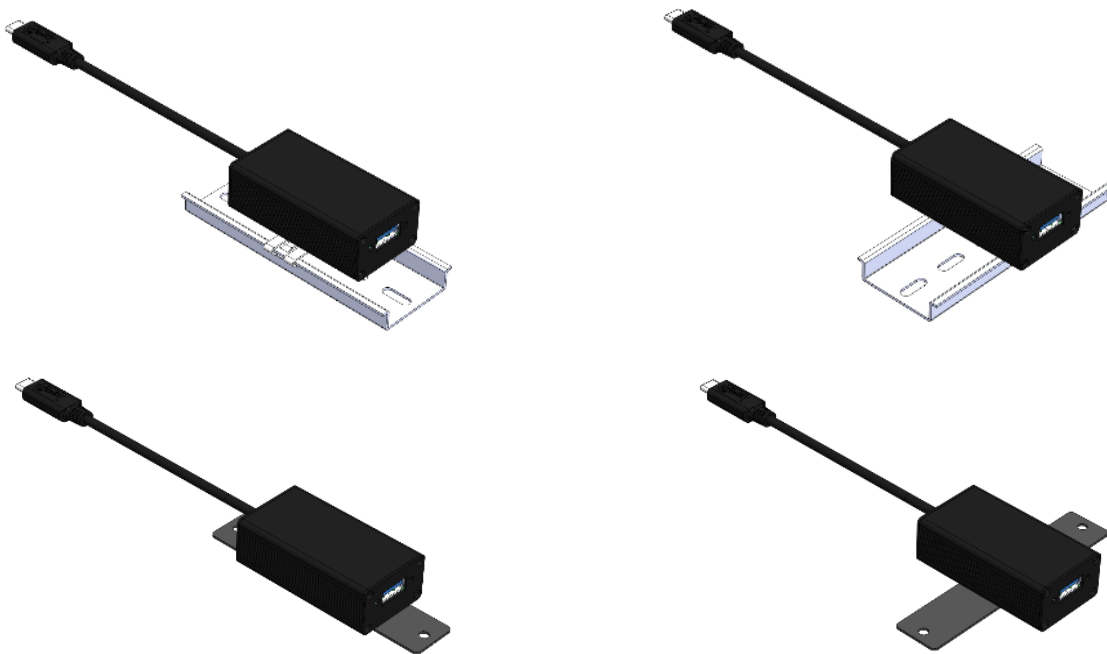
CG-1MGDUC3C



1	Downstream Port	USB 3.2 Gen 1 Female Type-C with Screw-Locking capabilities
2	Upstream Port (<i>On Rear</i>)	USB 3.2 Gen 1 Female Type-C with Screw-Locking capabilities
3	LED Indicator	Downstream port status indicator
4	LED Indicator	Upstream power indicator

3. Hardware Installation


1. **Use Static Electricity Discharge Precautions:** Before installation, eliminate potential static discharge from any objects that the hub may contact. This can be achieved by touching a bare metal chassis rail after powering off the system.
2. **Connecting the USB Hub to the Host:**
 - a. CG-1MGDU3A / CG-1MGDU3C: Plug the USB connector on the hub's integrated cable into the host port.
 - b. CG-1MGDUC3C: Plug the USB-C cable into the adapter, then into the host port.
3. **Connecting USB Devices:** Connect your USB devices to the downstream port of the hub.
4. **Install USB Hub Administrator Utilities:** Follow the instructions in the next chapter to install the USB Hub Administrator Utilities.
5. **If necessary, use the mounting kits to install the unit:**
 - a. DIN-Rail mounting clip can be attached either vertically or horizontally with the included screws. *(Works on all units)*
 - b. Surface mounting clip can be attached either vertically or horizontally with the included screws. *(Works on all units)*



4. USB Hub Administrator Utilities Installation

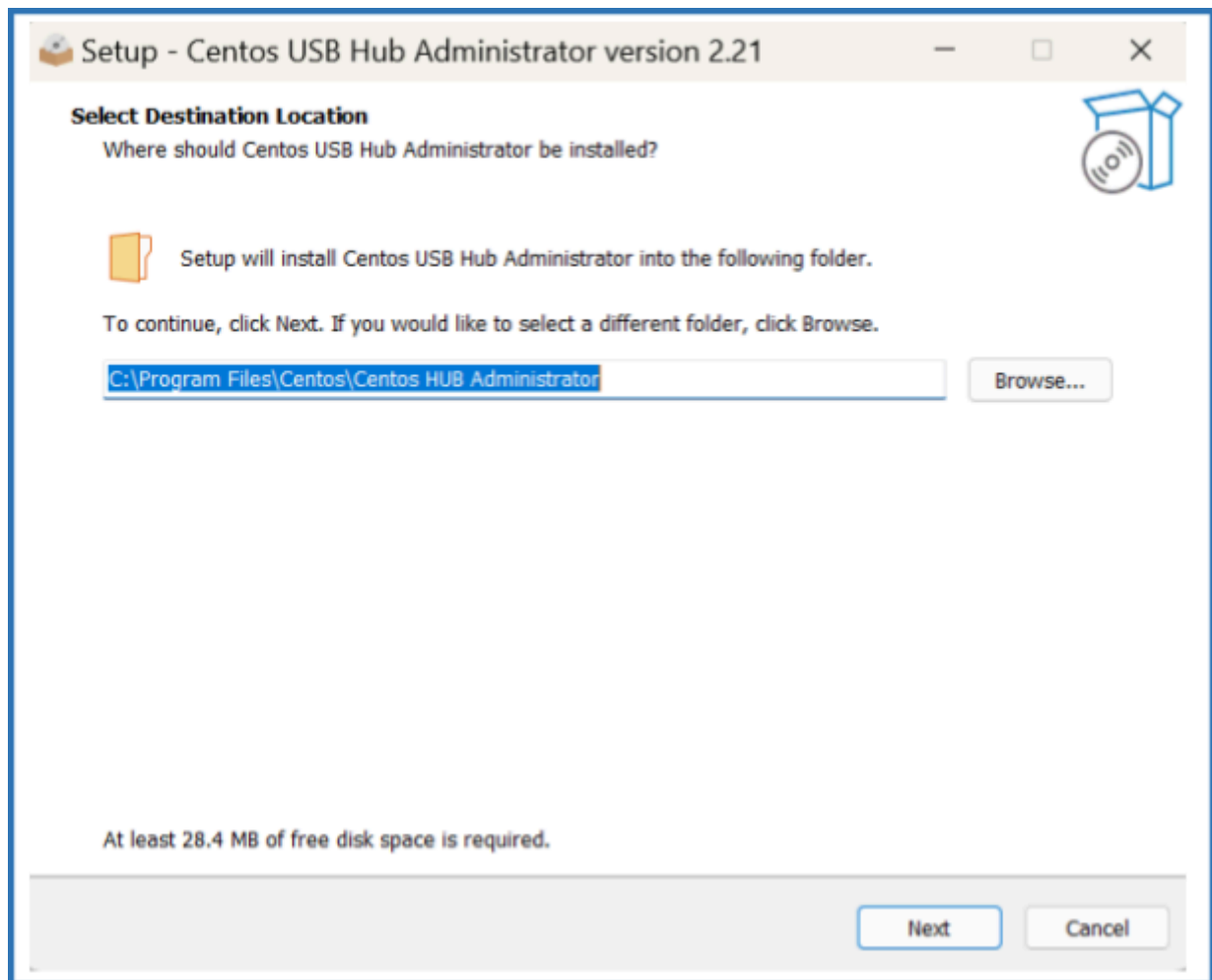
The Hub supports management utilities called USB Hub Administrator for major recent operating systems, including Windows (Windows 7 and above), macOS, and Linux.

The Windows setup program appears as follows:

 USBCTL-R2.21_setup_24_06_26.exe

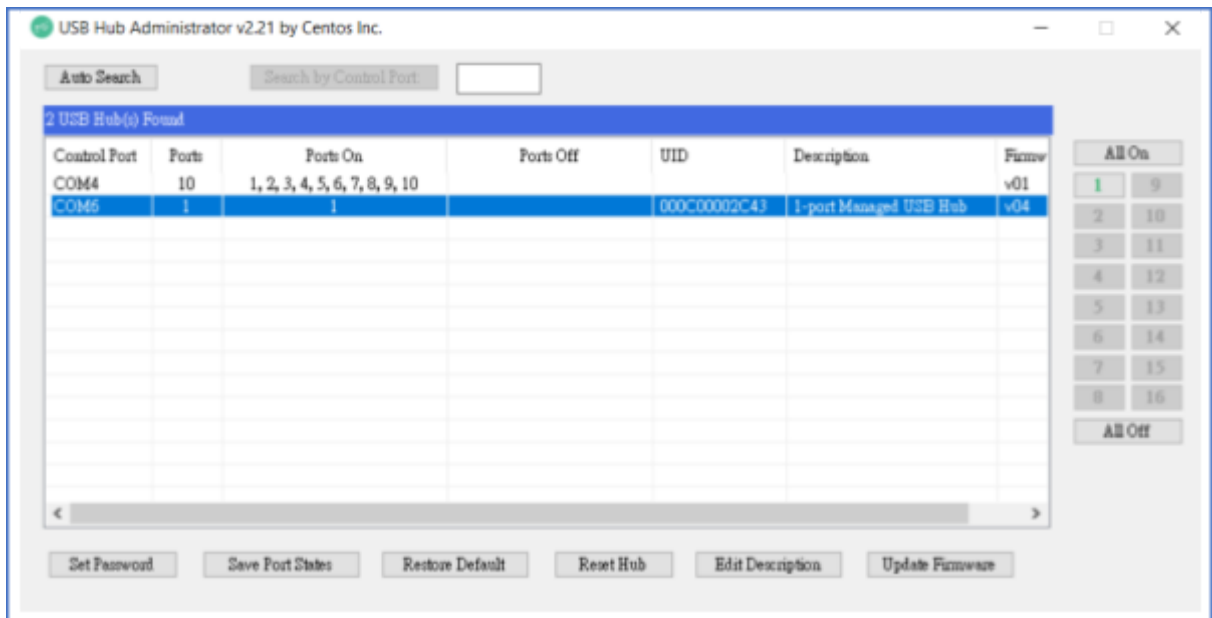
1. **To Install:**

Locate the setup program and double-click it to start the installation. Follow the on-screen instructions to complete the installation. Once installed, click the shortcut on the desktop to launch the utility.



2. To run the utility:

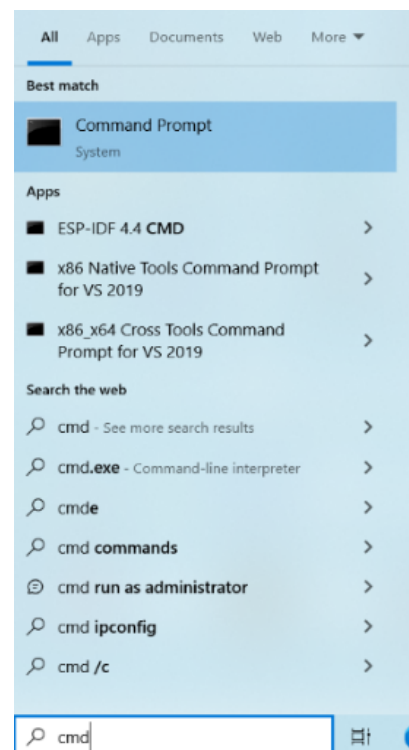
- Click Auto Search to find all managed USB hubs.
- Select the hub you want to control from the list.
- Click the numeric button (indicating the port number) to turn the USB port on or off.
- Save the current port states (if required) by clicking the **Save Port States** button.



3. To use CUSBC:

The console utility CUSBC is used to control the USB device. To run it, open Command Prompt as follows:

- Press **Win + R** to open the Run dialog.
- Type **cmd** and press **Enter** to open Command Prompt.
- In Command Prompt, navigate to the directory where CUSBC is located.
- Type **CUSBC** followed by the necessary commands to control the USB device.



To see all CUSBC commands, type:

CUSBC /?

```
C:\Users\Steve Chang>CUSBC /?
CUSBC Managed USB Hub API v2.20 for Windows
Usage: CUSBC command [password] [argument]
command:
  /Q      query (no password is required)
Usage:   CUSBC /Q [option]
         CUSBC /Q:COM [option]
  /Q      query all Managed USB Hubs
  /Q:COM  query on COM port COMn (n = 1 to 256), or UID0123459789AB
option   -F      output in formatted string
```

To query all Hubs connected:

CUSBC /Q

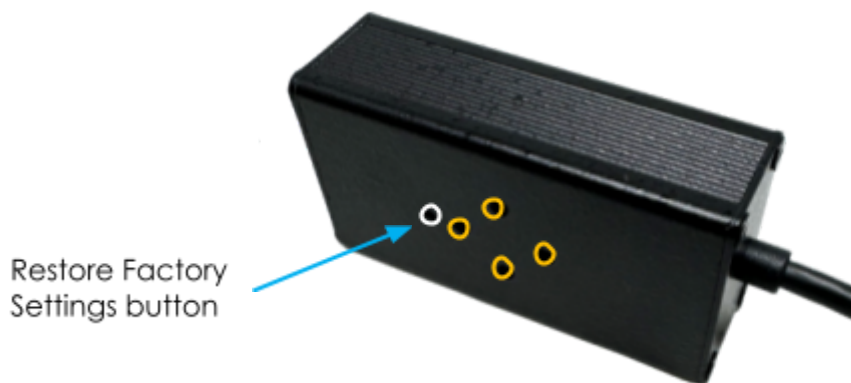
```
C:\Users\Steve Chang>CUSBC /Q
COM7, 1 ports, On=1, Off=None, FW=v04, UID=000C00002C43, Description=1-port Managed USB Hub
1 Managed USB Hub(s) Found.

C:\Users\Steve Chang>
```

5. Restore to Factory Settings

To perform a factory reset:

1. Ensure that the Power LED on your hub is illuminated.
2. Locate the Restore Factory Settings button on the bottom of your hub.



3. Use a paper clip or similar object to press and hold the button for at least 7 seconds.
4. Release the button.
5. Your hub will reset to its factory default settings:
6. The port will be **On**.
7. The password will be reset to: **pass**

6. Environmental Specifications

Operating Temperature: 0°C to 55°C (32°F to 131°F)

Humidity: 5% ~ 95% RH (non-condensing)

Dimensions (LxWxH): 160.2 x 33.0x 20.0 mm (2.37 x 1.30 x 0.79 in)

Notes

This product requires external power source to function. If the power LED is not illuminating after connecting, check that the power source is connected to the hub correctly, and is powered on.

Safety

- Read the entire Product Manual before implementing this product for your application. This manual contains important information about electrical connections that must be followed for safe and proper operation.
- Inspect the product closely for visual defects before putting it to use.
- Keep away from areas where moisture builds, this product contains electrical components that can be damaged by moisture build up, this can adversely affect your equipment connected to it.
- Do not disassemble the product. Handling the product's internal components can expose it to ESD (Electro-Static Discharge) hazards that can affect the function of the device.
- If this product is not functioning properly, email our support team at support@coolgear.com.

USB CHARGING & CONNECTIVITY EXPERTS

Within Every Great Machine

For over 20 years our rugged, off-the-shelf USB hubs, chargers, and serial products are ready to go for your next project. Based in the US, Coolgear has successfully engineered and deployed millions of connectivity solutions into industrial, medical, automotive, commercial, and aerospace industries.

We understand the importance of reliability, build quality, & consider all our customers' applications as critical wanting to ensure long-lasting event-free integrations.

Compliance Statement

View compliance within the product's respective Technical Data Sheet, found on the product's online listing.

Technical Support

When you reach out to Coolgear support, you'll find yourself in the hands of a solution-oriented and knowledgeable expert ready to answer whatever question you throw at them. If you ever need help with your product, visit coolgear.com/support for support tickets, downloads, and other support resources. For the latest drivers, please visit coolgear.com/download.

Product Standard Warranty

One (1) Year Warranty from Date of Purchase Invoice. Coolgear will repair or replace any Product determined to be defective and which has been returned, at your risk and expense, to Coolgear. Where Coolgear determines in its sole judgment that repair or replacement of such Product is not reasonable, Coolgear will keep the non-conforming Product and refund to you the amount you paid for such Product. Returned Products shall be subject to the balance of the Warranty Period otherwise applicable. Any reconditioned parts used by Coolgear shall be subject to all the same provisions as otherwise applicable to new parts. THE FOREGOING DESCRIBES COOLGEAR'S SOLE LIABILITY, AND YOUR SOLE REMEDY, FOR ANY BREACH OF WARRANTY. IF YOU DO NOT AGREE WITH THE TERMS OF THIS LIMITED WARRANTY, YOU MUST RETURN THE PRODUCTS UNUSED AND IN THEIR ORIGINAL CONTAINERS TO YOUR ORIGIN OF PURCHASE.

Limitation of Liability

This Limited Warranty does not cover: (i) defects or damages resulting from natural causes, casualty, accident, misuse or abuse, neglect, alterations, service or repair by other than Coolgear, including without limitation by you; (ii) improper installation or de-installation, operation or maintenance, improper connections with peripherals or other causes not arising out of defects in the materials or workmanship of Products; (iii) any Product for which the warranty sticker has been removed, modified or defaced; (iv) normal wear and tear; (v) damage to or loss of repaired or replaced Products during shipping by Coolgear except when such damage or loss is caused by poor or inadequate packaging by Coolgear; or (vi) Products purchased outside the United States. UNDER NO CIRCUMSTANCES WILL COOLGEAR BE LIABLE FOR ANY LOSS OF USE, INTERRUPTION OF BUSINESS OR ANY INDIRECT, SPECIAL, INCIDENTAL, PUNITIVE OR CONSEQUENTIAL DAMAGES OF ANY KIND (INCLUDING LOST PROFITS) REGARDLESS OF THE FORM OF ACTION WHETHER IN CONTRACT, TORT (INCLUDING NEGLIGENCE), STRICT PRODUCT LIABILITY OR OTHERWISE, EVEN IF COOLGEAR HAS BEEN ADVISED OF THE POSSIBILITY OF SUCH DAMAGES. IN NO EVENT SHALL THE TOTAL LIABILITY OF COOLGEAR HEREUNDER EXCEED THE GREATER OF \$50.00 OR THE AMOUNT YOU ACTUALLY PAID FOR THE PRODUCT GIVING RISE TO SUCH LIABILITY, REGARDLESS OF THE CAUSE OF ACTION, IN CONTRACT, TORT, STRICT LIABILITY OR OTHERWISE. NOT ALL JURISDICTIONS ALLOW SUCH LIMITATIONS OF DAMAGES SO THE FOREGOING LIMITATIONS MAY NOT APPLY TO YOU.

© 2022 Coolgear, Inc. All Rights Reserved. All products and accompanying digital documentation including images are the property and / or trademarks of Coolgear Inc. Coolgear Inc. are continuously improving upon its products. Product specifications are subject to change without notice.